

FINAL MINUTES  
Milk Commission Meeting Held October 19, 2022

The meeting of the State Milk Commission (Board) convened at 1:30 p.m. on Wednesday, October 19, 2022. The meeting was held at the Virginia Department of Forestry located at 900 Natural Resources Drive, Charlottesville, VA 22903.

**PRESENT:**

Jimmy Kerr, Chairperson, Producer Representative  
Kevin Craun, Producer Representative  
Jessica Jones, Consumer Representative  
Dennis Sugumele, Consumer Representative  
Rodrigo Velasquez-Soto, Consumer Representative

**ABSENT:**

Brian Linney, Processor Distributor Representative  
Sandra Welsford, Consumer Representative

**STAFF PRESENT:**

Crafton Wilkes, Administrator

Mr. Kerr called the meeting to order at 1:30 p.m. He asked for a motion to accept the minutes from the previous meeting. Dr. Jones moved to accept the minutes. Mr. Velasquez-Soto seconded the motion. The minutes were approved unanimously.

**APPROVE:** Craun, Jones, Kerr, Sugumele, Velasquez-Soto

**OPPOSE:** None

Mr. Sugumele introduced himself to the board as the most recent member appointed to serve and comes from an energy background. Mr. Wilkes gave a review of Milk Commission business since the last meeting. He stated that the Dairy Producer Margin Coverage program information would be sent to active dairy farms the week of October 24 and the intent to send applications with targeted information based on last year's enrollment. He did not expect funds to run out assuming participation did not increase dramatically. He then discussed a growing issue of school districts being unable to procure milk. The board discussed available options to improve access, and Mr. Wilkes will continue to work with districts when they request help. Mr. Wilkes presented data on grocery prices and the effect of each item's incremental increase on the overall grocery bill. Both the board and members of the public expressed concern for finding and keeping an effective labor force at all points in the milk supply.

The board reviewed information regarding the Commission's cost analysis that would be voted on at the next meeting. Fuel and hauling costs are increasing currently, but those costs may need to be reconsidered before making any decisions on cost to produce calculations. Mr. Wilkes asked that board members keep an eye on fuel forecasts to ensure the most accurate calculation could be used.

Mr. Wilkes reviewed findings from the preliminary hearings for those companies that had applied for milk distributor licenses. Mr. Craun motioned to approve all requested changes to distributor licenses, and Dr. Jones seconded the motion. The license changes were approved unanimously.

**APPROVE:** Craun, Jones, Kerr, Sugumele, Velasquez-Soto

**OPPOSE:** None

<u>License Number</u>	<u>License Type</u>	<u>Distributor</u>	<u>Market</u>	<u>Action</u>
366.000.3	NPGD	4P Foods, Inc PBC	All	Approve
367.000.3	NPGD	Canada Dry Potomac Corporation	All	Approve
367.001.3	NPGD	Canada Dry Potomac Corporation	All	Approve
367.002.3	NPGD	Canada Dry Potomac Corporation	All	Approve
367.003.3	NPGD	Canada Dry Potomac Corporation	All	Approve
368.000.3	NPGD	Exel Inc.	All	Approve
370.000.3	NPGD	Four Seasons Produce, Inc.	All	Approve
364.000.3	NPGD	GoGreen Farms LLC	All	Cancel
293.006.3	NPGD	McLane Midwest, Inc.	All	Approve
293.007.3	NPGD	McLane Eastern, Inc.	All	Approve

Mr. Kerr asked for any public comment, but there was no additional input.

The next Commission meeting is tentatively scheduled for Wednesday, December 14, 2022 at 2:00 p.m. in Charlottesville.



**STATE MILK COMMISSION**

*Crafton O. Wilkes, Administrator*

**Announcement of Producer Class I Price at 3.5% Butterfat October 2022**

	AUG 2022	SEP 2022	OCT 2022
<b>Eastern Market</b>			
Established Price	\$8.46	\$8.46	\$8.46
Add Adjustment (per §2VAC15-20-81)	\$22.30	\$20.79	\$19.89
<b>Eastern Market Class I Price (per cwt)</b>	<b>\$30.76</b>	<b>\$29.25</b>	<b>\$28.35</b>
Eastern Market Skim Price (per cwt)	19.3770	17.6995	16.2325
Eastern Market Butterfat Price (per lb)	3.4449	3.4764	3.6234
<b>Western Market</b>			
Established Price	\$8.16	\$8.16	\$8.16
Add Adjustment (per §2VAC15-20-81)	\$22.40	\$20.89	\$19.99
<b>Western Market Class I Price (per cwt)</b>	<b>\$30.56</b>	<b>\$29.05</b>	<b>\$28.15</b>
Western Market Skim Price (per cwt)	19.1770	17.4995	16.0325
Western Market Butterfat Price (per lb)	3.4429	3.4744	3.6214
<b>Southwestern Market</b>			
Established Price	\$7.96	\$7.96	\$7.96
Add Adjustment (per §2VAC15-20-81)	\$22.11	\$20.60	\$19.70
<b>Southwestern Market Class I Price (per cwt)</b>	<b>\$30.07</b>	<b>\$28.56</b>	<b>\$27.66</b>
Southwestern Market Skim Price (per cwt)	18.6877	17.0105	15.5435
Southwestern Market Butterfat Price (per lb)	3.4380	3.4695	3.6165

Class II Price Announcement Date	AUG 31, 2022	OCT 5, 2022	NOV 2, 2022
<b>Milk Commission Class II Price (per cwt)</b>	<b>\$26.91</b>		
Milk Commission Class II Skim Price (per cwt)	\$15.5300	\$14.5200	\$13.3700
Milk Commission Class II Butterfat Price (per lb)	3.4071		

Milk Commission Bi-Monthly Composite Index	436.5	432.8	429.8
Milk Commission Assessment Rate (per cwt)	0.03950	0.03950	0.03950
Federal Order Base Class I Price (per cwt)	\$25.13	\$23.62	\$22.71

Price Change from September 2022

	Class I (cwt)	Skim (cwt)	Butterfat (lb)
Eastern Market	▼ -\$0.90	▼ -\$1.47	▲ \$0.1470
Western Market	▼ -\$0.90	▼ -\$1.47	▲ \$0.1470
Southwestern Market	▼ -\$0.90	▼ -\$1.47	▲ \$0.1470

**Next Class I Announcement: Oct. 19, 2022**

**Next Class II Announcement: Oct. 5, 2022**

Virginia Department of Agriculture and Consumer Services  
State Milk Commission

**Announcement of Producer Class I Price at 3.5% Butterfat**

**October 2022**

**Virginia State Milk Commission Skim and Butterfat Prices, 2022**

Month	Eastern Market		Western Market		Southwestern Market		Bi-Monthly Index
	Skim per cwt	Butterfat per pound	Skim per cwt	Butterfat per pound	Skim per cwt	Butterfat per pound	
January	17.6630	2.3205	17.4630	2.3185	17.4630	2.3185	374.4
February	17.9320	2.8086	17.7320	2.8066	17.7320	2.8066	381.6
March	18.3830	3.0387	18.1830	3.0367	18.1830	3.0367	390.1
April	19.5890	3.1659	19.3890	3.1639	19.3890	3.1639	400.0
May	20.5990	3.1934	20.3990	3.1914	20.3990	3.1914	410.8
June	21.2650	3.1289	21.0650	3.1269	21.0650	3.1269	423.3
July	20.2640	3.4105	20.0640	3.4085	20.0640	3.4085	433.6
August	19.3770	3.4449	19.1770	3.4429	19.1770	3.4429	436.5
September	17.6995	3.4764	17.4995	3.4744	17.4995	3.4744	432.8
October	16.2325	3.6234	16.0325	3.6214	15.5435	3.6165	429.8
November							
December							
<b>AVERAGE</b>	18.9004	3.1611	18.7004	3.1591	18.6515	3.1586	411.3

**Virginia State Milk Commission Skim and Butterfat Prices, 2021**

Month	Eastern Market		Western Market		Southwestern Market		Bi-Monthly Index
	Skim per cwt	Butterfat per pound	Skim per cwt	Butterfat per pound	Skim per cwt	Butterfat per pound	
January	15.7050	1.6177	15.5050	1.6157	15.5050	1.6157	354.0
February	16.0515	1.6372	15.8515	1.6352	15.8515	1.6352	351.3
March	16.0355	1.4677	15.8355	1.4657	15.8355	1.4657	351.7
April	15.4155	1.7277	15.2155	1.7257	15.2155	1.7257	349.8
May	15.9755	2.0297	15.7755	2.0277	15.7755	2.0277	352.5
June	17.2365	2.0216	17.0365	2.0196	17.0365	2.0196	355.8
July	16.3930	2.0134	16.1930	2.0114	16.1930	2.0114	357.9
August	16.0430	1.9594	15.8430	1.9574	15.8430	1.9574	359.7
September	15.9040	1.9097	15.7040	1.9077	15.7040	1.9077	359.7
October	16.1130	1.9966	15.9130	1.9946	15.9130	1.9946	363.5
November	17.1830	1.9583	16.9830	1.9563	16.9830	1.9563	368.7
December	17.6530	2.1684	17.4530	2.1664	17.4530	2.1664	370.7
<b>AVERAGE</b>	16.3090	1.8756	16.1090	1.8736	16.1090	1.8736	357.9

Prevailing Market	Bristol	Charleston	Raleigh	Winston-Salem	Washington, DC
Over Order Premium	\$1.66	\$1.62	\$2.00	\$2.00	\$1.27

**Next Class I Announcement: Oct. 19, 2022**

**Next Class II Announcement: Oct. 5, 2022**



**STATE MILK COMMISSION**  
*Crafton O. Wilkes, Administrator*

<b>Announcement of Producer Class I Price at 3.5% Butterfat</b>		<b>August 2022</b>		
		<b>JUN 2022</b>	<b>JUL 2022</b>	<b>AUG 2022</b>
<b>Eastern Market</b>				
Established Price		\$8.26	\$8.46	\$8.46
Add Adjustment (per §2VAC15-20-81)		\$23.21	\$23.03	\$22.30
<b>Eastern Market Class I Price (per cwt)</b>		<b>\$31.47</b>	<b>\$31.49</b>	<b>\$30.76</b>
Eastern Market Skim Price (per cwt)		21.2650	20.2640	19.3770
Eastern Market Butterfat Price (per lb)		3.1289	3.4105	3.4449
<b>Western Market</b>				
Established Price		\$7.96	\$8.16	\$8.16
Add Adjustment (per §2VAC15-20-81)		\$23.31	\$23.13	\$22.40
<b>Western Market Class I Price (per cwt)</b>		<b>\$31.27</b>	<b>\$31.29</b>	<b>\$30.56</b>
Western Market Skim Price (per cwt)		21.0650	20.0640	19.1770
Western Market Butterfat Price (per lb)		3.1269	3.4085	3.4429
<b>Southwestern Market</b>				
Established Price		\$7.76	\$7.96	\$7.96
Add Adjustment (per §2VAC15-20-81)		\$23.01	\$22.84	\$22.11
<b>Southwestern Market Class I Price (per cwt)</b>		<b>\$30.77</b>	<b>\$30.80</b>	<b>\$30.07</b>
Southwestern Market Skim Price (per cwt)		20.5640	19.5680	18.6877
Southwestern Market Butterfat Price (per lb)		3.1218	3.4036	3.4380
<b>Class II Price Announcement Date</b>				
		<b>JUN 29, 2022</b>	<b>AUG 3, 2022</b>	<b>AUG 31, 2022</b>
<b>Milk Commission Class II Price (per cwt)</b>		<b>\$26.65</b>		
Milk Commission Class II Skim Price (per cwt)		\$15.5000	\$15.4200	\$15.5300
Milk Commission Class II Butterfat Price (per lb)		3.3393		
<b>Milk Commission Bi-Monthly Composite Index</b>				
		423.3	433.6	436.5
<b>Milk Commission Assessment Rate (per cwt)</b>				
		0.03950	0.03950	0.03950
<b>Federal Order Base Class I Price (per cwt)</b>				
		\$25.87	\$25.87	\$25.13

	<b>Price Change from July 2022</b>		
	<b>Class I (cwt)</b>	<b>Skim (cwt)</b>	<b>Butterfat (lb)</b>
Eastern Market	▼ -\$0.74	▼ -\$0.89	▲ \$0.0344
Western Market	▼ -\$0.74	▼ -\$0.89	▲ \$0.0344
Southwestern Market	▼ -\$0.73	▼ -\$0.88	▲ \$0.0344

**Next Class I Announcement: Aug. 17, 2022**

**Next Class II Announcement: Aug. 3, 2022**



**STATE MILK COMMISSION**

*Crafton O. Wilkes, Administrator*

**Announcement of Producer Class I Price at 3.5% Butterfat May 2022**

	MAR 2022	APR 2022	MAY 2022
<b>Eastern Market</b>			
Established Price	\$8.26	\$8.26	\$8.26
Add Adjustment (per §2VAC15-20-81)	\$20.12	\$21.72	\$22.79
<b>Eastern Market Class I Price (per cwt)</b>	<b>\$28.38</b>	<b>\$29.98</b>	<b>\$31.05</b>
Eastern Market Skim Price (per cwt)	18.3830	19.5890	20.5990
Eastern Market Butterfat Price (per lb)	3.0387	3.1659	3.1934
<b>Western Market</b>			
Established Price	\$7.96	\$7.96	\$7.96
Add Adjustment (per §2VAC15-20-81)	\$20.22	\$21.82	\$22.89
<b>Western Market Class I Price (per cwt)</b>	<b>\$28.18</b>	<b>\$29.78</b>	<b>\$30.85</b>
Western Market Skim Price (per cwt)	18.1830	19.3890	20.3990
Western Market Butterfat Price (per lb)	3.0367	3.1639	3.1914
<b>Southwestern Market</b>			
Established Price	\$7.76	\$7.76	\$7.76
Add Adjustment (per §2VAC15-20-81)	\$19.93	\$21.54	\$22.61
<b>Southwestern Market Class I Price (per cwt)</b>	<b>\$27.69</b>	<b>\$29.30</b>	<b>\$30.37</b>
Southwestern Market Skim Price (per cwt)	17.6930	18.9020	19.9120
Southwestern Market Butterfat Price (per lb)	3.0318	3.1590	3.1865

Class II Price Announcement Date	MAR 30, 2022	MAY 4, 2022	JUN 2, 2022
<b>Milk Commission Class II Price (per cwt)</b>	<b>\$24.76</b>		
Milk Commission Class II Skim Price (per cwt)	\$14.4100	\$15.2100	\$15.5200
Milk Commission Class II Butterfat Price (per lb)	3.1005		

Milk Commission Bi-Monthly Composite Index	390.1	400.0	410.8
Milk Commission Assessment Rate (per cwt)	0.03950	0.03950	0.03950
Federal Order Base Class I Price (per cwt)	\$22.88	\$24.38	\$25.45

	Price Change from April 2022		
	Class I (cwt)	Skim (cwt)	Butterfat (lb)
Eastern Market	▲ \$1.07	▲ \$1.01	▲ \$0.0275
Western Market	▲ \$1.07	▲ \$1.01	▲ \$0.0275
Southwestern Market	▲ \$1.07	▲ \$1.01	▲ \$0.0275

**Next Class I Announcement: May. 18, 2022**

**Next Class II Announcement: May. 4, 2022**



**STATE MILK COMMISSION**  
*Crafton O. Wilkes, Administrator*

---

**Announcement of Producer Class II Price at 3.5% Butterfat**

**August 2022**

---

	JUN 2022	JUL 2022	AUG 2022
<b>State Milk Commission Class II Price (per cwt)</b>	\$26.65	\$26.66	<b>\$26.91</b>
Class II Skim Price (per cwt)	15.5000	15.4200	15.5300
Class II Butterfat Price (per lb)	3.3393	3.3670	3.4071

**August 2022 Highlights**

-The Class II price for August increased over July by \$0.25 per cwt. The Class II Skim price increased by \$0.11 per cwt, and the Class II Butterfat price increased by \$0.04 per lb.

---

**Next Announcement: Oct. 5, 2022**



**STATE MILK COMMISSION**  
*Crafton O. Wilkes, Administrator*

---

**Announcement of Producer Class II Price at 3.5% Butterfat**

---

**May 2022**

	MAR 2022	APR 2022	MAY 2022
<b>State Milk Commission Class II Price (per cwt)</b>	\$24.76	\$25.71	<b>\$25.87</b>
Class II Skim Price (per cwt)	14.4100	15.2100	15.5200
Class II Butterfat Price (per lb)	3.1005	3.1531	3.1126

**May 2022 Highlights**

-The Class II price for May increased over April by \$0.16 per cwt. The Class II Skim price increased by \$0.31 per cwt, and the Class II Butterfat price decreased by \$0.04 per lb.

---

**Next Announcement: Jun. 29, 2022**





**STATE MILK COMMISSION**  
*Crafton Wilkes, Administrator*

Milk Market Bulletin

August 2022

**Class I Sales and Allocation**

Market	Monthly Sales Comparison			Annual Sales Comparison		
	Aug '22	Aug '21	Change (%)	Aug '22	Aug '21	Change (%)
East	27,814,184	27,143,772	2.47%	227,870,177	235,189,457	-3.11%
West	25,904,669	25,529,690	1.47%	203,617,427	205,041,186	-0.69%
Southwest	3,557,320	3,625,599	-1.88%	28,317,518	28,636,677	-1.11%
<b>TOTAL</b>	<b>57,276,173</b>	<b>56,299,060</b>	<b>1.74%</b>	<b>459,805,121</b>	<b>468,867,320</b>	<b>-1.93%</b>

Order	Base Assigned (000s pounds)	Class I Allocation (000s pounds)
Federal Order 1	16,822	13,387
Federal Order 5	37,251	29,800
Federal Order - Other	8,939	7,463
Virginia	1,264	1,121
<b>TOTAL</b>	<b>64,276</b>	<b>51,771</b>

**Producer Information**

Market	Producer Price (at 3.5% butterfat)				Baseholding Producers by State	
	Jun '22	Jul '22	Aug '22	Aug '21		
Class I - East	\$31.47	\$31.49	\$30.76	\$22.34	Maryland	23
Class I - West	\$31.27	\$31.29	\$30.56	\$22.14	Pennsylvania	94
Class I - Southwest	\$30.77	\$30.80	\$30.07	\$21.64	Virginia	280
Class II - All Markets	\$26.65	\$26.66	\$26.91	\$16.51		
Class II - Butterfat	\$3.3393	\$3.3670	\$3.4071	\$1.8578	Other States	7

**Milk Production**

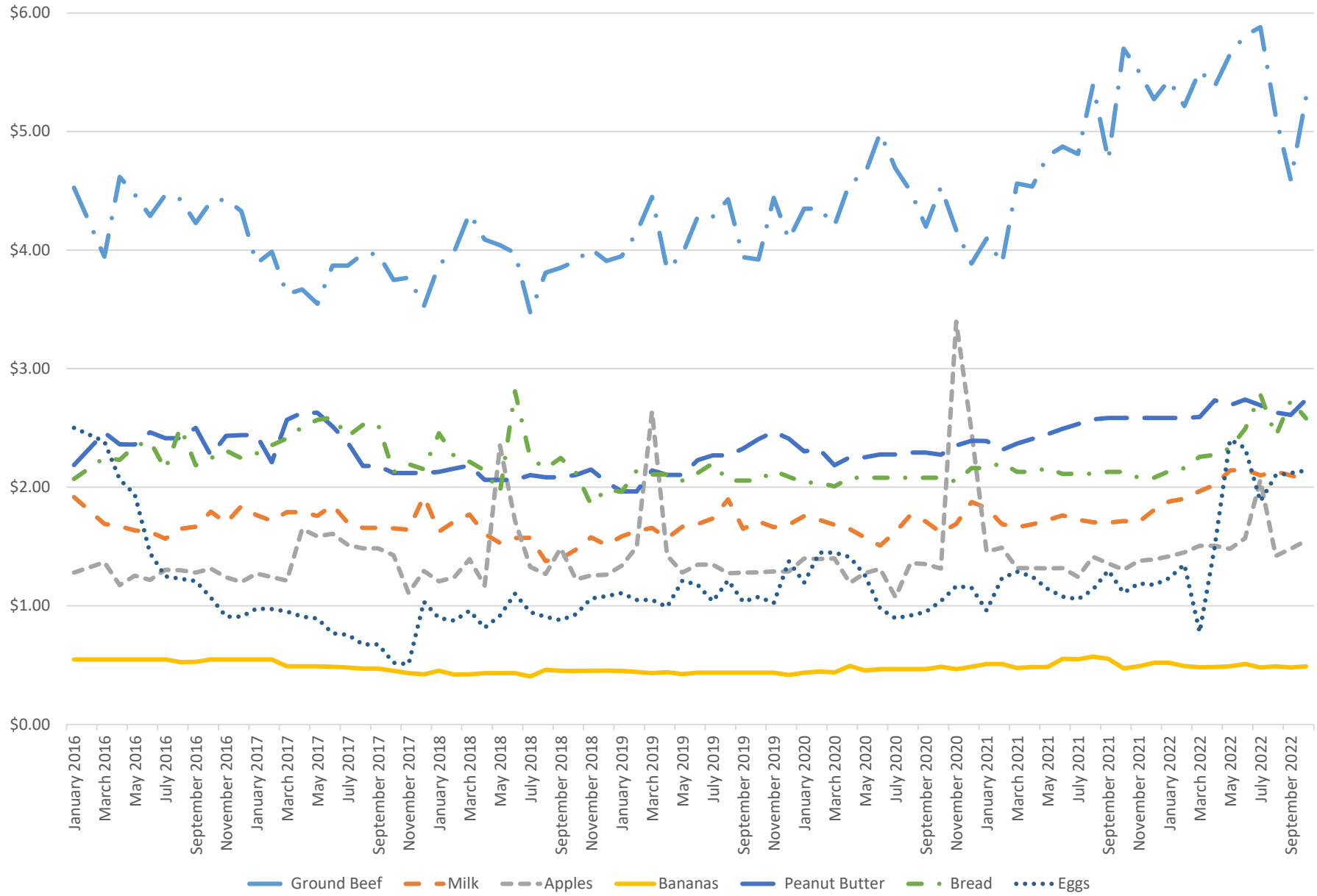
	Milk Production				TOTAL	404
	Aug '22	Aug '21	Change	Change (%)		
VA Baseholders	78,792,733	80,251,310	-1,458,577	-1.82%		
VA Non-Baseholders	35,683,376	36,163,770	-480,394	-1.33%		
Out-of-State Baseholders	56,787,920	55,853,778	934,142	1.67%		
VA PRODUCTION TOTAL	114,476,109	116,415,080	-1,938,971	-1.67%		
BASE PRODUCTION TOTAL	135,580,653	136,105,088	-524,435	-0.39%		

**Sales Information (all figures represent pounds sold)**

Market	Whole	Red. Fat	Lowfat	Skim	Flavored		Buttermilk	Eggnog	Other <sup>1</sup>
					Whole	Lowfat			
East	11,109,979	10,184,989	2,690,154	1,630,569	302,896	1,135,101	339,095	0	421,402
West	10,244,588	8,801,891	2,125,273	1,348,925	373,433	1,869,090	300,402	0	841,066
Southwest	1,391,223	1,300,843	227,705	204,068	73,595	260,541	95,643	0	3,701
<b>TOTAL</b>	<b>22,745,791</b>	<b>20,287,723</b>	<b>5,043,132</b>	<b>3,183,562</b>	<b>749,923</b>	<b>3,264,732</b>	<b>735,141</b>	<b>0</b>	<b>1,266,169</b>

<sup>1</sup> Other category may include lactose-free, custards, or other specialty milk products designated as Class I.

### 2016-22 Grocery Item Price Change



Virginia State Milk Commission  
Base Assignment System  
March 2022

Established 9-month Base	DFA SE	DFA NE	MDVA	CMPA	Land O'Lakes	Cumberland Valley	Mt. Joy	Lanco-Pennland	Independent Producers	Established Base Total
	27,256,069	400,633	22,457,322	15,030,320	929,965	257,104	121,889	3,210,568		69,663,870

Order	Distributor	DFA SE	DFA NE	MDVA	CMPA	Land O'Lakes	Cumberland Valley	Mt. Joy	Lanco-Pennland	Independent Producers	Total Base Assignment
5	Borden Dairy KY			433,045							433,045
33	East Side Jersey Dairy										
1	Cloverland Farms Dairy	68,190									68,190
1	Crowley Foods	795,441									795,441
1	Cumberland Dairy										
5	Dairy Fresh	5,801,396									5,801,396
1	Dutch Valley Foods					376,746					376,746
5	Maola High Point				4,523,034						4,523,034
5	Homestead Creamery			386,219							386,219
1	HP Hood	1,259,349		1,259,349		573,658					3,092,356
5	Land-O-Sun Spartanburg	1,464,813									1,464,813
1	Marva Maid Landover			7,882,232			262,755				8,144,986
5	Marva Maid Newport News	10,731,336		2,031,693	4,083,199				2,797,639		19,643,867
5	Mayfield	679,862									679,862
5	Milkco	1,617,852									1,617,852
33	Nestle	288,262									288,262
VA	Potomac Farms			321,859							321,859
7	Saputo - KY	157,135									157,135
1	Saputo - NY	198,495									198,495
33	Superior Dairy			1,998,601							1,998,601
1	Tuscan Lehigh Dairies	817,253	409,438					124,568			1,351,259
33	United Dairy	1,918,355			5,755,064						7,673,418
1	Upstate Niagara			699,700							699,700
1	Wawa Dairy								483,491		483,491
5	Westover Dairy			7,938,192							7,938,192
VA	White Wave Mt. Crawford				999,360	0					999,360
5	Winchester Farms	34,869									34,869
1	Dairy Maid	2,022,496									2,022,496
<b>TOTAL</b>		<b>27,855,103</b>	<b>409,438</b>	<b>22,950,890</b>	<b>15,360,657</b>	<b>950,404</b>	<b>262,755</b>	<b>124,568</b>	<b>3,281,130</b>		<b>71,194,944</b>

<b>9-month Base Minus Total</b>		<b>(0)</b>		<b>0</b>	<b>0</b>						
---------------------------------	--	------------	--	----------	----------	--	--	--	--	--	--

Virginia State Milk Commission  
Base Assignment System  
March 2022

Established 9-month Base	DFA SE	DFA NE	MDVA	CMPA	Land O'Lakes	Cumberland Valley	Mt. Joy	Lanco-Pennland	Established Base Total
	27,255,884	400,633	22,045,917	14,892,350	929,965	257,104	121,889	3,210,568	69,114,310

Order	Distributor	DFA SE	DFA NE	MDVA	CMPA	Land O'Lakes	Cumberland Valley	Mt. Joy	Lanco-Pennland	Total Base Assignment
5	Borden Dairy KY			429,629						429,629
33	East Side Jersey Dairy									
1	Cloverland Farms Dairy	67,652								67,652
1	Crowley Foods	789,166								789,166
1	Cumberland Dairy									
5	Dairy Fresh	5,755,630								5,755,630
1	Dutch Valley Foods					373,774				373,774
5	Maola High Point				4,487,353					4,487,353
5	Homestead Creamery			383,172						383,172
1	HP Hood	1,245,666		1,245,666		576,630				3,067,962
5	Land-O-Sun Spartanburg	1,453,258								1,453,258
1	Marva Maid Landover			7,817,978			262,755			8,080,733
5	Marva Maid Newport News	10,874,193		1,782,094	4,031,162				2,801,453	19,488,902
5	Mayfield	674,499								674,499
5	Milkco	1,605,089								1,605,089
33	Nestle	285,988								285,988
VA	Potomac Farms			319,320						319,320
7	Saputo - KY	155,896								155,896
1	Saputo - NY	196,929								196,929
33	Superior Dairy			1,982,835						1,982,835
1	Tuscan Lehigh Dairies	806,593	409,438					124,568		1,340,599
33	United Dairy	1,903,221			5,709,664					7,612,885
1	Upstate Niagara			694,180						694,180
1	Wawa Dairy								479,677	479,677
5	Westover Dairy			7,875,569						7,875,569
VA	White Wave Mt. Crawford				991,476	0				991,476
5	Winchester Farms	34,594								34,594
1	Dairy Maid	2,006,541								2,006,541
<b>TOTAL</b>		<b>27,854,914</b>	<b>409,438</b>	<b>22,530,443</b>	<b>15,219,654</b>	<b>950,404</b>	<b>262,755</b>	<b>124,568</b>	<b>3,281,130</b>	<b>70,633,306</b>

<b>9-month Base Minus Total</b>		<b>0</b>								<b>(0)</b>
---------------------------------	--	----------	--	--	--	--	--	--	--	------------

Virginia State Milk Commission  
Base Assignment System  
March 2022  
CORRECTION 0305-07-10-12-15

	DFA SE	DFA NE	MDVA	CMPA	Land O'Lakes	Cumberland Valley	Mt. Joy	Lanco-Pennland	Cobblestone	Established Base Total
<b>Established 9-month Base</b>	27,255,884	400,633	22,045,917	14,892,350	929,965	257,104	121,889	3,210,568		69,114,310
<b>Corrected 9-month Base</b>	27,247,573	430,352	22,045,917	14,617,944	972,963	257,104	121,889	3,385,986	34,582	69,114,310

Order	Distributor	DFA SE	DFA NE	MDVA	CMPA	Land O'Lakes	Cumberland Valley	Mt. Joy	Lanco-Pennland	Cobblestone	Total Base Assignment
5	Borden Dairy KY			429,629							429,629
33	East Side Jersey Dairy										
1	Cloverland Farms Dairy	67,652									67,652
1	Crowley Foods	789,166									789,166
1	Cumberland Dairy										
5	Dairy Fresh	5,755,630									5,755,630
1	Dutch Valley Foods					373,774					373,774
5	Maola High Point				4,487,353						4,487,353
5	Homestead Creamery			383,172							383,172
1	HP Hood	1,223,694		1,223,694		620,573					3,067,962
5	Land-O-Sun Spartanburg	1,453,258									1,453,258
1	Marva Maid Landover			7,817,978			262,755				8,080,733
5	Marva Maid Newport News	10,918,044		1,804,065	3,750,725				2,980,727	35,342	19,488,902
5	Mayfield	674,499									674,499
5	Milkco	1,605,089									1,605,089
33	Nestle	285,988									285,988
VA	Potomac Farms			319,320							319,320
7	Saputo - KY	155,896									155,896
1	Saputo - NY	196,929									196,929
33	Superior Dairy			1,982,835							1,982,835
1	Tuscan Lehigh Dairies	776,221	439,810					124,568			1,340,599
33	United Dairy	1,903,221			5,709,664						7,612,885
1	Upstate Niagara			694,180							694,180
1	Wawa Dairy								479,677		479,677
5	Westover Dairy			7,875,569							7,875,569
VA	White Wave Mt. Crawford				991,476						991,476
5	Winchester Farms	34,594									34,594
1	Dairy Maid	2,006,541									2,006,541
<b>TOTAL</b>		<b>27,846,421</b>	<b>439,810</b>	<b>22,530,443</b>	<b>14,939,217</b>	<b>994,347</b>	<b>262,755</b>	<b>124,568</b>	<b>3,460,403</b>	<b>35,342</b>	<b>70,633,306</b>

<b>9-month Base Minus Total</b>		<b>(0)</b>		<b>0</b>		<b>(0)</b>					<b>(0)</b>
---------------------------------	--	------------	--	----------	--	------------	--	--	--	--	------------

Virginia State Milk Commission  
Base Assignment System  
March 2022  
CORRECTION 220318

	DFA SE	DFA NE	MDVA	CMPA	Land O'Lakes	Cumberland Valley	Mt. Joy	Lanco-Pennland	Cobblestone	Established Base Total
<b>Established 9-month Base</b>	27,271,986	430,352	22,045,917	14,593,531	972,963	257,104	121,889	3,385,986	34,582	69,114,310
<b>Corrected 9-month Base</b>	27,248,244	430,352	22,045,917	14,593,531	972,963	257,104	121,889	3,409,728	34,582	69,114,310

Order	Distributor	DFA SE	DFA NE	MDVA	CMPA	Land O'Lakes	Cumberland Valley	Mt. Joy	Lanco-Pennland	Cobblestone	Total Base Assignment
5	Borden Dairy KY			429,629							429,629
33	East Side Jersey Dairy										
1	Cloverland Farms Dairy	67,652									67,652
1	Crowley Foods	789,166									789,166
1	Cumberland Dairy										
5	Dairy Fresh	5,755,630									5,755,630
1	Dutch Valley Foods					373,774					373,774
5	Maola High Point				4,487,353						4,487,353
5	Homestead Creamery			383,172							383,172
1	HP Hood	1,223,694		1,223,694		620,573					3,067,962
5	Land-O-Sun Spartanburg	1,453,258									1,453,258
1	Marva Maid Landover			7,817,978			262,755				8,080,733
5	Marva Maid Newport News	10,918,729		1,804,065	3,725,775				3,004,990	35,342	19,488,902
5	Mayfield	674,499									674,499
5	Milkco	1,605,089									1,605,089
33	Nestle	285,988									285,988
VA	Potomac Farms			319,320							319,320
7	Saputo - KY	155,896									155,896
1	Saputo - NY	196,929									196,929
33	Superior Dairy			1,982,835							1,982,835
1	Tuscan Lehigh Dairies	776,221	439,810					124,568			1,340,599
33	United Dairy	1,903,221			5,709,664						7,612,885
1	Upstate Niagara			694,180							694,180
1	Wawa Dairy								479,677		479,677
5	Westover Dairy			7,875,569							7,875,569
VA	White Wave Mt. Crawford				991,476						991,476
5	Winchester Farms	34,594									34,594
1	Dairy Maid	2,006,541									2,006,541
<b>TOTAL</b>		<b>27,847,107</b>	<b>439,810</b>	<b>22,530,443</b>	<b>14,914,268</b>	<b>994,347</b>	<b>262,755</b>	<b>124,568</b>	<b>3,484,667</b>	<b>35,342</b>	<b>70,633,306</b>

<b>9-month Base Minus Total</b>				<b>0</b>		<b>(0)</b>				<b>(0)</b>	
---------------------------------	--	--	--	----------	--	------------	--	--	--	------------	--

Virginia State Milk Commission  
Base Assignment System  
March 2022  
CORRECTION MARCH FINAL

	DFA SE	DFA NE	MDVA	CMPA	Land O'Lakes	Cumberland Valley	Mt. Joy	Lanco-Pennland	Cobblestone	Established Base Total
<b>Established 9-month Base</b>	27,239,782	430,352	22,045,917	14,625,735	972,963	257,104	121,889	3,385,986	34,582	69,114,310
<b>Corrected 9-month Base</b>	27,216,040	430,352	22,045,917	14,625,735	972,963	257,104	121,889	3,409,728	34,582	69,114,310

Order	Distributor	DFA SE	DFA NE	MDVA	CMPA	Land O'Lakes	Cumberland Valley	Mt. Joy	Lanco-Pennland	Cobblestone	Total Base Assignment
5	Borden Dairy KY			429,629							429,629
33	East Side Jersey Dairy										
1	Cloverland Farms Dairy	67,652									67,652
1	Crowley Foods	789,166									789,166
1	Cumberland Dairy										
5	Dairy Fresh	5,755,630									5,755,630
1	Dutch Valley Foods					373,774					373,774
5	Maola High Point				4,487,353						4,487,353
5	Homestead Creamery			383,172							383,172
1	HP Hood	1,223,694		1,223,694		620,573					3,067,962
5	Land-O-Sun Spartanburg	1,453,258									1,453,258
1	Marva Maid Landover			7,817,978			262,755				8,080,733
5	Marva Maid Newport News	10,885,817		1,804,065	3,758,687				3,004,990	35,342	19,488,902
5	Mayfield	674,499									674,499
5	Milkco	1,605,089									1,605,089
33	Nestle	285,988									285,988
VA	Potomac Farms			319,320							319,320
7	Saputo - KY	155,896									155,896
1	Saputo - NY	196,929									196,929
33	Superior Dairy			1,982,835							1,982,835
1	Tuscan Lehigh Dairies	776,221	439,810					124,568			1,340,599
33	United Dairy	1,903,221			5,709,664						7,612,885
1	Upstate Niagara			694,180							694,180
1	Wawa Dairy								479,677		479,677
5	Westover Dairy			7,875,569							7,875,569
VA	White Wave Mt. Crawford				991,476						991,476
5	Winchester Farms	34,594									34,594
1	Dairy Maid	2,006,541									2,006,541
<b>TOTAL</b>		<b>27,814,195</b>	<b>439,810</b>	<b>22,530,443</b>	<b>14,947,180</b>	<b>994,347</b>	<b>262,755</b>	<b>124,568</b>	<b>3,484,667</b>	<b>35,342</b>	<b>70,633,306</b>

<b>9-month Base Minus Total</b>					<b>(0)</b>	<b>(0)</b>					<b>(0)</b>
---------------------------------	--	--	--	--	------------	------------	--	--	--	--	------------

March 2022 Producer Base Transfers

Date Received	Effective Date	Cooperative	Action	Status	Transfer	Producer Name	License	9-Month	3-Month	Adj 9-Month	Adj 3-Month
February 23, 2022	March 1, 2022	MDVA	Total Transfer	UN	220302	Robert L or Matthew Sensenig	005364	171,271	157,569	0	0
February 23, 2022	March 1, 2022	MDVA	Issue	UN	220302	Clinton L or Roseann F Sensenig	005420	0	0	171,271	157,569
February 23, 2022	March 1, 2022	CMPA	Amend	UN	220303	Mountain Hollow Dairy LLC	004560	248,659	228,766	0	0
February 23, 2022	March 1, 2022	CMPA	Amend	UN	220303	Mountain Hollow Dairy LLC	004560	0	0	248,659	228,766
February 23, 2022	March 1, 2022	CMPA	Amend	CO	220304	Sundial Dairy II LLC	005019	368,321	338,855	0	0
February 23, 2022	March 1, 2022	CMPA	Amend	CO	220304	Lively Hope Dairy LLC	005019	0	0	368,321	338,855
February 23, 2022	March 1, 2022	CMPA	Partial Transfer	CO	220305	Pricker Bush Farm LLC	005252	424,061	390,136	394,342	362,795
February 23, 2022	March 1, 2022	DFAN	Issue	UN	220305	Levi Fisher	005421	0	0	29,719	27,341
February 23, 2022	March 1, 2022	CMPA	Partial Transfer	CO	220306	Pricker Bush Farm LLC	005252	394,342	362,795	371,063	341,378
February 23, 2022	March 1, 2022	CMPA	Increase	CO	220306	Rolling Hill Dairy LLC	004849	195,763	180,102	200,000	184,000
February 23, 2022	March 1, 2022	CMPA	Increase	CO	220306	Emery and Cheryl Bowman	004736	290,294	267,070	309,336	284,589
February 23, 2022	March 1, 2022	CMPA	Partial Transfer	CO	220307	Pricker Bush Farm LLC	005252	371,063	341,378	161,063	148,178
February 23, 2022	March 1, 2022	LPQM	Increase	UN	220307	Birch Lane Dairy	004376	73,441	67,566	83,441	76,766
February 23, 2022	March 1, 2022	LPQM	Increase	UN	220307	Silver Creek Dairy	003228	174,670	160,696	234,670	215,896
February 23, 2022	March 1, 2022	LPQM	Increase	UN	220307	Early Joy Dairy	005411	62,274	57,292	102,274	94,092
February 23, 2022	March 1, 2022	LPQM	Increase	UN	220307	Creeklnd Dairy	004415	109,465	100,708	209,465	192,708
February 23, 2022	March 1, 2022	CMPA	Partial Transfer	CO	220308	Pricker Bush Farm LLC	005252	161,063	148,178	105,998	97,518
February 23, 2022	March 1, 2022	CMPA	Increase	CO	220308	Huckleberry Dairy	003347	526,888	484,737	581,953	535,397
February 23, 2022	March 1, 2022	CMPA	Partial Transfer	CO	220309	Pricker Bush Farm LLC	005252	105,998	97,518	52,998	48,758
February 23, 2022	March 1, 2022	CMPA	Increase	UN	220309	Waller Farms Inc	001379	563,807	518,702	573,807	527,902
February 23, 2022	March 1, 2022	CMPA	Increase	CO	220309	Lick Run Dairy LLC	005301	162,327	149,341	175,327	161,301
February 23, 2022	March 1, 2022	CMPA	Increase	CO	220309	Marysville Dairy LLC	005313	268,999	247,479	298,999	275,079
February 23, 2022	March 1, 2022	CMPA	Partial Transfer	CO	220310	Pricker Bush Farm LLC	005252	52,998	48,758	10,000	9,200
February 23, 2022	March 1, 2022	LOLC	Increase	UN	220310	Keystone Dairy Venture	005172	500,000	460,000	542,998	499,558
February 23, 2022	March 1, 2022	CMPA	Total Transfer	CO	220311	Pricker Bush Farm LLC	005252	10,000	9,200	0	0
February 23, 2022	March 1, 2022	CMPA	Increase	CO	220311	Jerrold Rohrer	004532	181,800	167,256	191,800	176,456
February 25, 2022	March 1, 2022	LPQM	Partial Transfer	UN	220312	Silver Creek Dairy	003228	234,670	215,896	135,088	124,281
February 25, 2022	March 1, 2022	LPQM	Increase	UN	220312	Peaceful Pine Hollow	004392	123,156	113,304	188,156	173,104
February 25, 2022	March 1, 2022	COBB	Issue	UN	220312	Barny Bay Dairy Inc	000082	0	0	34,582	31,815
February 28, 2022	March 1, 2022	MDVA	Total Transfer	UN	220313	Amos L or Sadie S Stoltzfus	005229	54,132	49,801	0	0
February 28, 2022	March 1, 2022	MDVA	Issue	UN	220313	Jesse L and Malinda S Stoltzfus	005422	0	0	54,132	49,801
March 14, 2022	March 16, 2022	MDVA	Total Transfer	UN	220314	Jesse J or Sarah E Lapp	005368	58,000	53,360	0	0
March 14, 2022	March 16, 2022	MDVA	Issue	UN	220314	John D or Mary Z King	005423	0	0	58,000	53,360
March 8, 2022	March 16, 2022	DFAS	Total Transfer	UN	220315	Philip L Knicely	004573	16,102	14,814	0	0
March 8, 2022	March 16, 2022	CMPA	Increase	CO	220315	Hess Dairy	004683	725,625	667,575	741,727	682,389
March 8, 2022	March 16, 2022	CVMP	Total Transfer	CO	220316	John Jr or Eunice J Rudolph	004881	27,459	25,262	0	0
March 8, 2022	March 16, 2022	CVMP	Issue	CO	220316	Lamar V and Edna F Rudolph	005424	0	0	27,459	25,262
March 15, 2022	March 16, 2022	LOLC	Amend	CO	220317	Rice Fred E-Rice Crest	003481	27,870	25,640	0	0
March 15, 2022	March 16, 2022	LOLC	Amend	CO	220317	Rice Crest Dairy LLC	003481	0	0	27,870	25,640
March 8, 2022	March 16, 2022	DFAS	Partial Transfer	UN	220318	Phillips Robert A-Mill Cr	001066	85,434	78,599	39,434	36,279
March 8, 2022	March 16, 2022	LPQM	Increase	UN	220318	Silver Creek Dairy	003228	135,088	124,281	155,088	142,681
March 8, 2022	March 16, 2022	LPQM	Increase	UN	220318	Brookside Dairy	005345	150,293	138,270	166,293	152,990
March 8, 2022	March 16, 2022	LPQM	Increase	UN	220318	Birch Lane Dairy	004376	83,441	76,766	93,441	85,966



Virginia State Milk Commission  
Base Assignment System  
April 2022

Established 9-month Base	DFA SE	DFA NE	MDVA	CMPA	Land O'Lakes	Cumberland Valley	Mt. Joy	Lanco-Pennland	Cobblestone	Established Base Total
	27,193,782	430,352	22,045,917	14,625,735	972,963	257,104	121,889	3,431,986	34,582	69,114,310

Order	Distributor	DFA SE	DFA NE	MDVA	CMPA	Land O'Lakes	Cumberland Valley	Mt. Joy	Lanco-Pennland	Cobblestone	Total Base Assignment
5	Borden Dairy KY			449,055							449,055
33	East Side Jersey Dairy										
1	Cloverland Farms Dairy	76,838									76,838
1	Crowley Foods	605,250									605,250
1	Cumberland Dairy										
5	Dairy Fresh	6,227,914									6,227,914
1	Dutch Valley Foods					306,829					306,829
5	Maola High Point				4,222,467						4,222,467
5	Homestead Creamery			373,188							373,188
1	HP Hood	1,168,292		1,168,292		655,442					2,992,025
5	Land-O-Sun Spartanburg	2,045,531									2,045,531
1	Marva Maid Landover			7,635,575			254,279				7,889,853
5	Marva Maid Newport News	8,972,340		2,404,331	3,911,938				2,968,844	34,202	18,291,656
5	Mayfield	684,120									684,120
5	Milkco	1,760,123									1,760,123
33	Nestle	318,582									318,582
VA	Potomac Farms			375,067							375,067
7	Saputo - KY	166,726									166,726
1	Saputo - NY	221,018									221,018
33	Superior Dairy			1,745,698							1,745,698
1	Tuscan Lehigh Dairies	829,325	425,623					120,550			1,375,497
33	United Dairy	1,834,928			5,504,784						7,339,712
1	Upstate Niagara			616,103							616,103
1	Wawa Dairy								425,428		425,428
5	Westover Dairy			7,036,347							7,036,347
VA	White Wave Mt. Crawford				825,824						825,824
5	Winchester Farms	30,633									30,633
1	Dairy Maid	1,953,331									1,953,331
<b>TOTAL</b>		<b>26,894,949</b>	<b>425,623</b>	<b>21,803,654</b>	<b>14,465,013</b>	<b>962,271</b>	<b>254,279</b>	<b>120,550</b>	<b>3,394,272</b>	<b>34,202</b>	<b>68,354,812</b>

<b>9-month Base Minus Total</b>				<b>(0)</b>	<b>(0)</b>						<b>(0)</b>
---------------------------------	--	--	--	------------	------------	--	--	--	--	--	------------

Virginia State Milk Commission  
Base Assignment System  
April 2022  
CORRECTION 0402-03-04-05

	DFA SE	DFA NE	MDVA	CMPA	Land O'Lakes	Cumberland Valley	Mt. Joy	Lanco-Pennland	Cobblestone	Established Base Total
<b>Established 9-month Base</b>	27,193,782	430,352	22,045,917	14,625,735	972,963	257,104	121,889	3,431,986	34,582	69,114,310
<b>Corrected 9-month Base</b>	26,981,700	430,352	22,045,917	14,519,959	1,145,611	257,104	121,889	3,577,196	34,582	69,114,310

Order	Distributor	DFA SE	DFA NE	MDVA	CMPA	Land O'Lakes	Cumberland Valley	Mt. Joy	Lanco-Pennland	Cobblestone	Total Base Assignment
5	Borden Dairy KY			449,055							449,055
33	East Side Jersey Dairy										
1	Cloverland Farms Dairy	76,838									76,838
1	Crowley Foods	605,250									605,250
1	Cumberland Dairy										
5	Dairy Fresh	6,227,914									6,227,914
1	Dutch Valley Foods					306,829					306,829
5	Maola High Point				4,222,467						4,222,467
5	Homestead Creamery			373,188							373,188
1	HP Hood	1,082,916		1,082,916		826,193					2,992,025
5	Land-O-Sun Spartanburg	2,045,531									2,045,531
1	Marva Maid Landover			7,635,575			254,279				7,889,853
5	Marva Maid Newport News	8,847,964		2,489,707	3,807,325				3,112,458	34,202	18,291,656
5	Mayfield	684,120									684,120
5	Milkco	1,760,123									1,760,123
33	Nestle	318,582									318,582
VA	Potomac Farms			375,067							375,067
7	Saputo - KY	166,726									166,726
1	Saputo - NY	221,018									221,018
33	Superior Dairy			1,745,698							1,745,698
1	Tuscan Lehigh Dairies	829,325	425,623					120,550			1,375,497
33	United Dairy	1,834,928			5,504,784						7,339,712
1	Upstate Niagara			616,103							616,103
1	Wawa Dairy								425,428		425,428
5	Westover Dairy			7,036,347							7,036,347
VA	White Wave Mt. Crawford				825,824						825,824
5	Winchester Farms	30,633									30,633
1	Dairy Maid	1,953,331									1,953,331
<b>TOTAL</b>		<b>26,685,198</b>	<b>425,623</b>	<b>21,803,654</b>	<b>14,360,399</b>	<b>1,133,022</b>	<b>254,279</b>	<b>120,550</b>	<b>3,537,886</b>	<b>34,202</b>	<b>68,354,812</b>

<b>9-month Base Minus Total</b>				<b>0</b>	<b>(0)</b>						<b>(0)</b>
---------------------------------	--	--	--	----------	------------	--	--	--	--	--	------------

Virginia State Milk Commission  
Base Assignment System  
April 2022  
CORRECTION 0406-09

	DFA SE	DFA NE	MDVA	CMPA	Land O'Lakes	Cumberland Valley	Mt. Joy	Lanco-Pennland	Cobblestone	Established Base Total
<b>Established 9-month Base</b>	26,981,700	430,352	22,045,917	14,519,959	1,145,611	257,104	121,889	3,577,196	34,582	69,114,310
<b>Corrected 9-month Base</b>	26,966,139	423,445	22,052,824	14,499,062	1,145,611	257,104	121,889	3,613,654	34,582	69,114,310

Order	Distributor	DFA SE	DFA NE	MDVA	CMPA	Land O'Lakes	Cumberland Valley	Mt. Joy	Lanco-Pennland	Cobblestone	Total Base Assignment
5	Borden Dairy KY			449,055							449,055
33	East Side Jersey Dairy										
1	Cloverland Farms Dairy	76,838									76,838
1	Crowley Foods	605,250									605,250
1	Cumberland Dairy										
5	Dairy Fresh	6,227,914									6,227,914
1	Dutch Valley Foods					306,829					306,829
5	Maola High Point				4,222,467						4,222,467
5	Homestead Creamery			373,188							373,188
1	HP Hood	1,082,916		1,082,916		826,193					2,992,025
5	Land-O-Sun Spartanburg	2,045,531									2,045,531
1	Marva Maid Landover			7,635,575			254,279				7,889,853
5	Marva Maid Newport News	8,825,743		2,496,538	3,786,657				3,148,516	34,202	18,291,656
5	Mayfield	684,120									684,120
5	Milkco	1,760,123									1,760,123
33	Nestle	318,582									318,582
VA	Potomac Farms			375,067							375,067
7	Saputo - KY	166,726									166,726
1	Saputo - NY	221,018									221,018
33	Superior Dairy			1,745,698							1,745,698
1	Tuscan Lehigh Dairies	836,156	418,792					120,550			1,375,497
33	United Dairy	1,834,928			5,504,784						7,339,712
1	Upstate Niagara			616,103							616,103
1	Wawa Dairy								425,428		425,428
5	Westover Dairy			7,036,347							7,036,347
VA	White Wave Mt. Crawford				825,824						825,824
5	Winchester Farms	30,633									30,633
1	Dairy Maid	1,953,331									1,953,331
<b>TOTAL</b>		<b>26,669,808</b>	<b>418,792</b>	<b>21,810,485</b>	<b>14,339,732</b>	<b>1,133,022</b>	<b>254,279</b>	<b>120,550</b>	<b>3,573,944</b>	<b>34,202</b>	<b>68,354,812</b>

<b>9-month Base Minus Total</b>		<b>(0)</b>			<b>(0)</b>						<b>(0)</b>
---------------------------------	--	------------	--	--	------------	--	--	--	--	--	------------

**April 2022 Producer Base Transfers**

<b>Date Received</b>	<b>Effective Date</b>	<b>Cooperative</b>	<b>Action</b>	<b>Status</b>	<b>Transfer</b>	<b>Producer Name</b>	<b>License</b>	<b>9-Month</b>	<b>3-Month</b>	<b>Adj 9-Month</b>	<b>Adj 3-Month</b>
March 8, 2022	April 1, 2022	DFAS	Total Transfer	UN	220402	Phillips Robert A-Mill Cr	001066	39,434	36,279	0	0
March 8, 2022	April 1, 2022	CMPA	Increase	CO	220402	Jerrold Rohrer	004532	191,800	176,456	193,795	178,291
March 8, 2022	April 1, 2022	CMPA	Increase	CO	220402	Brookshire Farm LLC	003556	82,561	75,956	120,000	110,400
March 22, 2022	April 1, 2022	CMPA	Partial Transfer	CO	220403	Hess Dairy	004683	741,727	682,389	145,210	133,593
March 22, 2022	April 1, 2022	CMPA	Increase	CO	220403	Evergreen Ridge Dairy LLC	004717	519,853	478,265	1,116,370	1,027,061
March 22, 2022	April 1, 2022	DFAS	Total Transfer	UN	220404	Cherry Grove Of Fairfield	000015	172,648	158,836	0	0
March 22, 2022	April 1, 2022	LOLC	Increase	UN	220404	Keystone Dairy Venture	005172	542,998	499,558	715,646	658,394
March 23, 2022	April 1, 2022	CMPA	Cooperative Change	CO	220405	Hess Dairy	004683	145,210	133,593	0	0
March 23, 2022	April 1, 2022	LPQM	Cooperative Change	CO	220405	Hess Dairy	004683	0	0	145,210	133,593
March 24, 2022	April 1, 2022	DFAS	Total Transfer	UN	220406	Hodges View Farm LLC	005226	15,561	14,316	0	0
March 24, 2022	April 1, 2022	CMPA	Increase	CO	220406	Storey Creek Dairy	005247	187,535	172,532	203,096	186,848
March 25, 2022	April 1, 2022	CMPA	Partial Transfer	CO	220407	Currin Dairy	005318	389,062	357,937	347,117	319,348
March 25, 2022	April 1, 2022	CMPA	Issue	UN	220407	Myron and Heidi Yoder	005425	0	0	41,945	38,589
March 25, 2022	April 1, 2022	DFAN	Total Transfer	UN	220408	Pa Lyn-Leigh Farm	005144	6,907	6,354	0	0
March 25, 2022	April 1, 2022	MDVA	Increase	UN	220408	Savage Leigh Holsteins	004259	362,026	333,064	368,933	339,418
March 28, 2022	April 1, 2022	CMPA	Total Transfer	CO	220409	Our Hope Holsteins	005321	36,458	33,541	0	0
March 28, 2022	April 1, 2022	LPQM	Increase	UN	220409	Hess Dairy	004683	145,210	133,593	181,668	167,134
March 31, 2022	April 1, 2022	MDVA	Total Transfer	CO	220410	Martin Robt L &/Or Pa	003663	517,820	476,394	0	0
March 31, 2022	April 1, 2022	MDVA	Total Transfer	CO	220410	Noah S Hertzler	005392	38,867	35,758	0	0
March 31, 2022	April 1, 2022	MDVA	Total Transfer	CO	220410	Jacob D and Mollie H Esh	005413	10,857	9,988	0	0
March 31, 2022	April 1, 2022	MDVA	Total Transfer	CO	220410	Jonas Z Swarey	005385	17,932	16,497	0	0
March 31, 2022	April 1, 2022	MDVA	Total Transfer	CO	220410	Israel and Katherine Yoder	005380	38,088	35,041	0	0
March 31, 2022	April 1, 2022	MDVA	Total Transfer	CO	220410	Stephen M Kanagy	005398	30,216	27,799	0	0
March 31, 2022	April 1, 2022	MDVA	Total Transfer	CO	220410	Jacob A Swarey	005381	33,804	31,100	0	0
March 31, 2022	April 1, 2022	MDVA	Total Transfer	CO	220410	Benjamin S. Esh	005371	32,488	29,889	0	0
March 31, 2022	April 1, 2022	MDVA	Total Transfer	CO	220410	Jacob Kanagy	005382	18,729	17,231	0	0
March 31, 2022	April 1, 2022	MDVA	Total Transfer	CO	220410	Moses Stoltzfus	005389	32,855	30,227	0	0
March 31, 2022	April 1, 2022	MDVA	Increase	CO	220410	Coldsprings Farm	002739	680,114	625,705	1,451,770	1,335,629

Virginia State Milk Commission  
Base Assignment System  
May 2022

Established 9-month Base	DFA SE	DFA NE	MDVA	CMPA	Land O'Lakes	Cumberland Valley	Mt. Joy	Lanco-Pennland	Cobblestone	Established Base Total
	26,966,139	423,445	22,052,824	14,499,062	1,145,611	257,104	121,889	3,613,654	34,582	69,114,310

Order	Distributor	DFA SE	DFA NE	MDVA	CMPA	Land O'Lakes	Cumberland Valley	Mt. Joy	Lanco-Pennland	Cobblestone	Total Base Assignment
5	Borden Dairy KY			488,601							488,601
33	East Side Jersey Dairy										
1	Cloverland Farms Dairy	67,849									67,849
1	Crowley Foods	356,284									356,284
1	Cumberland Dairy										
5	Dairy Fresh	6,178,408									6,178,408
1	Dutch Valley Foods					302,736					302,736
5	Maola High Point				4,259,311						4,259,311
5	Homestead Creamery			395,888							395,888
1	HP Hood	827,120		827,120		868,053					2,522,294
5	Land-O-Sun Spartanburg	2,286,289									2,286,289
1	Marva Maid Landover			7,753,198			262,755				8,015,953
5	Marva Maid Newport News	9,247,817		3,247,602	3,983,781				3,202,189	35,342	19,716,732
5	Mayfield	746,520									746,520
5	Milkco	1,925,811									1,925,811
33	Nestle	366,143									366,143
VA	Potomac Farms			411,080							411,080
7	Saputo - KY	183,289									183,289
1	Saputo - NY	332,069									332,069
33	Superior Dairy			1,789,904							1,789,904
1	Tuscan Lehigh Dairies	1,132,725	432,751					124,568			1,690,044
33	United Dairy	1,879,307			5,637,921						7,517,228
1	Upstate Niagara			570,334							570,334
1	Wawa Dairy								490,886		490,886
5	Westover Dairy			7,053,773							7,053,773
VA	White Wave Mt. Crawford				936,709						936,709
5	Winchester Farms	30,476									30,476
1	Dairy Maid	1,998,692									1,998,692
<b>TOTAL</b>		<b>27,558,801</b>	<b>432,751</b>	<b>22,537,501</b>	<b>14,817,723</b>	<b>1,170,789</b>	<b>262,755</b>	<b>124,568</b>	<b>3,693,075</b>	<b>35,342</b>	<b>70,633,306</b>

<b>9-month Base Minus Total</b>		<b>0</b>			<b>0</b>						<b>0</b>
---------------------------------	--	----------	--	--	----------	--	--	--	--	--	----------

**May 2022 Producer Base Transfers**

<b>Date Received</b>	<b>Effective Date</b>	<b>Cooperative</b>	<b>Action</b>	<b>Status</b>	<b>Transfer</b>	<b>Producer Name</b>	<b>License</b>	<b>9-Month</b>	<b>3-Month</b>	<b>Adj 9-Month</b>	<b>Adj 3-Month</b>
April 27, 2022	May 1, 2022	CMPA	Partial Transfer	CO	220502	Marysville Dairy LLC	005313	298,999	275,079	286,999	264,039
April 27, 2022	May 1, 2022	CMPA	Increase	UN	220502	Myron and Heidi Yoder	005425	41,945	38,589	53,945	49,629
April 27, 2022	May 1, 2022	MDVA	Partial Transfer	UN	220503	Amos G or Leah G Fisher	005264	55,720	51,262	30,720	28,262
April 27, 2022	May 1, 2022	MDVA	Increase	UN	220503	Enos K or Mary L King	005351	60,000	55,200	85,000	78,200



**June 2022 Producer Base Transfers**

<b>Date Received</b>	<b>Effective Date</b>	<b>Cooperative</b>	<b>Action</b>	<b>Status</b>	<b>Transfer</b>	<b>Producer Name</b>	<b>License</b>	<b>9-Month</b>	<b>3-Month</b>	<b>Adj 9-Month</b>	<b>Adj 3-Month</b>
May 25, 2022	June 1, 2022	MDVA	Partial Transfer	UN	220602	Amos G or Leah G Fisher	005264	30,720	28,262	720	662
May 25, 2022	June 1, 2022	MDVA	Issue	UN	220602	Jacob S and Elizabeth G Lapp	005426	0	0	30,000	27,600
May 26, 2022	June 1, 2022	MDVA	Amend	UN	220603	Rockhill Farm	004660	137,292	126,309	0	0
May 26, 2022	June 1, 2022	MDVA	Amend	UN	220603	Rockhill Farm	004660	0	0	137,292	126,309
May 30, 2022	June 1, 2022	MDVA	Amend	UN	220605	Mummert Kh & De-Sunset Ha	004743	18,305	16,841	0	0
May 30, 2022	June 1, 2022	MDVA	Amend	UN	220605	Sunset Haven Farm	004743	0	0	18,305	16,841





Virginia State Milk Commission  
Base Assignment System  
July 2022  
CORRECTION 0706-07

	DFA SE	DFA NE	MDVA	CMPA	Land O'Lakes	Cumberland Valley	Mt. Joy	Lanco-Pennland	Cobblestone	Established Base Total
<b>Established 3-month Base</b>	24,808,846	389,569	20,288,597	13,339,136	1,053,962	236,536	112,138	3,324,561	31,815	63,585,161
<b>Corrected 3-month Base</b>	24,762,846	389,569	20,288,597	13,280,151	1,053,962	236,536	112,138	3,429,546	31,815	63,585,161

Order	Distributor	DFA SE	DFA NE	MDVA	CMPA	Land O'Lakes	Cumberland Valley	Mt. Joy	Lanco-Pennland	Cobblestone	Total Base Assignment
5	Borden Dairy KY			217,747							217,747
1	Cloverland Farms Dairy	43,408									43,408
1	Crowley Foods	364,591									364,591
5	Dairy Fresh	5,127,384									5,127,384
1	Dutch Valley Foods					299,144					299,144
5	Maola High Point				4,301,492						4,301,492
5	Homestead Creamery			417,954							417,954
1	HP Hood	1,327,614		1,327,614		766,274					3,421,502
5	Land-O-Sun Spartanburg	601,818									601,818
1	Marva Maid Landover			8,647,288			239,107				8,886,394
5	Marva Maid Newport News	9,907,865		516,704	3,049,290				3,003,866	32,161	16,509,886
5	Mayfield	559,525									559,525
5	Milkco	1,974,785									1,974,785
33	Nestle	364,637									364,637
VA	Potomac Farms			309,209							309,209
7	Saputo - KY	209,237									209,237
1	Saputo - NY	223,000									223,000
33	Superior Dairy			1,774,921							1,774,921
1	Tuscan Lehigh Dairies	693,034	393,804					113,357			1,200,195
33	United Dairy	1,693,787			5,081,360						6,775,147
1	Upstate Niagara			576,431							576,431
1	Wawa Dairy								462,958		462,958
5	Westover Dairy			6,721,258							6,721,258
VA	White Wave Mt. Crawford				992,358						992,358
5	Winchester Farms	28,613									28,613
1	Dairy Maid	1,912,709									1,912,709
<b>TOTAL</b>		<b>25,032,008</b>	<b>393,804</b>	<b>20,509,125</b>	<b>13,424,501</b>	<b>1,065,418</b>	<b>239,107</b>	<b>113,357</b>	<b>3,466,824</b>	<b>32,161</b>	<b>64,276,304</b>

<b>3-month Base Minus Total</b>					<b>0</b>	<b>0</b>
---------------------------------	--	--	--	--	----------	----------

**July 2022 Producer Base Transfers**

<b>Date Received</b>	<b>Effective Date</b>	<b>Cooperative</b>	<b>Action</b>	<b>Status</b>	<b>Transfer</b>	<b>Producer Name</b>	<b>License</b>	<b>9-Month</b>	<b>3-Month</b>	<b>Adj 9-Month</b>	<b>Adj 3-Month</b>
June 7, 2022	July 1, 2022	MDVA	Total Transfer	CO	220702	Herbert W Harkins	003681	73,305	67,441	0	0
June 7, 2022	July 1, 2022	MDVA	Increase	CO	220702	Misty Mountain Dairy LLC	004291	573,278	527,416	646,583	594,857
June 17, 2022	July 1, 2022	MDVA	Total Transfer	UN	220703	Amos G or Leah G Fisher	005264	720	662	0	0
June 17, 2022	July 1, 2022	MDVA	Increase	UN	220703	Jacob S and Elizabeth G Lapp	005426	30,000	27,600	30,720	28,262
June 23, 2022	July 1, 2022	CMPA	Partial Transfer	CO	220704	Phillip & Phil Goodwin	000520	161,749	148,809	17,635	16,224
June 23, 2022	July 1, 2022	CMPA	Increase	CO	220704	Marysville Dairy LLC	005313	286,999	264,039	401,113	369,024
June 23, 2022	July 1, 2022	CMPA	Increase	CO	220704	Edgewood Dairy	005065	215,005	197,805	245,005	225,405
June 23, 2022	July 1, 2022	CMPA	Total Transfer	CO	220705	Poor House Dairy	000664	220,891	203,220	0	0
June 23, 2022	July 1, 2022	CMPA	Issue	UN	220705	Poor House Dairy LLC	005427	0	0	220,891	203,220
June 29, 2022	July 1, 2022	CMPA	Partial Transfer	CO	220706	Marysville Dairy LLC	005313	401,113	369,024	286,999	264,039
June 29, 2022	July 1, 2022	LPQM	Issue	UN	220706	Whispering Pines Dairy, LLC	005428	0	0	114,114	104,985
June 29, 2022	July 1, 2022	DFAS	Partial Transfer	UN	220707	Watkins R M & Sons Inc	003093	567,615	522,206	517,615	476,206
June 29, 2022	July 1, 2022	CMPA	Increase	UN	220707	Poor House Dairy LLC	005427	220,891	203,220	270,891	249,220

Virginia State Milk Commission  
Base Assignment System  
August 2022

Established 3-month Base	DFA SE	DFA NE	MDVA	CMPA	Land O'Lakes	Cumberland Valley	Mt. Joy	Lanco-Pennland	Cobblestone	Established Base Total
	24,762,846	389,569	20,288,597	13,280,151	1,053,962	236,536	112,138	3,429,546	31,815	63,585,161

Order	Distributor	DFA SE	DFA NE	MDVA	CMPA	Land O'Lakes	Cumberland Valley	Mt. Joy	Lanco-Pennland	Cobblestone	Total Base Assignment
5	Borden Dairy KY			291,842							291,842
1	Cloverland Farms Dairy	33,364									33,364
1	Crowley Foods	419,624									419,624
5	Dairy Fresh	5,460,353									5,460,353
1	Dutch Valley Foods					301,277					301,277
5	Maola High Point				4,069,164						4,069,164
5	Homestead Creamery			362,456							362,456
1	HP Hood	1,270,048		1,270,048		764,141					3,304,238
5	Land-O-Sun Spartanburg	590,492									590,492
1	Marva Maid Landover			8,338,220			239,107				8,577,327
5	Marva Maid Newport News	9,857,083		1,055,012	3,402,261				2,961,151	32,161	17,307,668
5	Mayfield	604,000									604,000
5	Milkco	1,934,227									1,934,227
33	Nestle	328,947									328,947
VA	Potomac Farms			300,093							300,093
7	Saputo - KY	190,910									190,910
1	Saputo - NY	140,304									140,304
33	Superior Dairy			1,767,153							1,767,153
1	Tuscan Lehigh Dairies	607,520	393,804					113,357			1,114,680
33	United Dairy	1,662,908			4,988,724						6,651,631
1	Upstate Niagara			520,263							520,263
1	Wawa Dairy								505,673		505,673
5	Westover Dairy			6,604,037							6,604,037
VA	White Wave Mt. Crawford				964,352						964,352
5	Winchester Farms	26,531									26,531
1	Dairy Maid	1,905,697									1,905,697
<b>TOTAL</b>		<b>25,032,008</b>	<b>393,804</b>	<b>20,509,125</b>	<b>13,424,501</b>	<b>1,065,418</b>	<b>239,107</b>	<b>113,357</b>	<b>3,466,824</b>	<b>32,161</b>	<b>64,276,304</b>

<b>3-month Base Minus Total</b>		<b>0</b>			<b>0</b>						<b>0</b>
---------------------------------	--	----------	--	--	----------	--	--	--	--	--	----------



**August 2022 Producer Base Transfers**

<b>Date Received</b>	<b>Effective Date</b>	<b>Cooperative</b>	<b>Action</b>	<b>Status</b>	<b>Transfer</b>	<b>Producer Name</b>	<b>License</b>	<b>9-Month</b>	<b>3-Month</b>	<b>Adj 9-Month</b>	<b>Adj 3-Month</b>
July 10, 2022	August 1, 2022	MDVA	Total Transfer	CO	220802	Rhodeland Plantation LLC	004924	106,383	97,872	0	0
July 10, 2022	August 1, 2022	MDVA	Increase	CO	220802	Rocky Ridge Dairy LLC	005295	169,552	155,988	275,935	253,860
July 26, 2022	August 1, 2022	CMPA	Partial Transfer	UN	220803	Gerald and/or Dan Blankenship	001912	90,000	82,800	50,000	46,000
July 26, 2022	August 1, 2022	CMPA	Increase	UN	220803	R & S Dairy LLC	005312	321,988	296,229	361,988	333,029
July 28, 2022	August 1, 2022	CMPA	Partial Transfer	UN	220804	Maple Lane Dairy	005369	63,469	58,391	46,000	42,320
July 28, 2022	August 1, 2022	LPQM	Increase	UN	220804	Whispering Pines Dairy, LLC	005428	114,114	104,985	131,583	121,056
July 29, 2022	August 1, 2022	LPQM	Partial Transfer	UN	220805	Samuel G Miller	005163	91,554	84,230	41,554	38,230
July 29, 2022	August 1, 2022	MDVA	Increase	UN	220805	Jacob S and Elizabeth G Lapp	005426	30,720	28,262	80,720	74,262

Virginia State Milk Commission  
Base Assignment System  
September 2022

Established 9-month Base	DFA SE	DFA NE	MDVA	CMPA	Land O'Lakes	Cumberland Valley	Mt. Joy	Lanco-Pennland	Cobblestone	Established Base Total
	26,916,139	423,445	22,102,824	14,417,479	1,145,611	257,104	121,889	3,695,237	34,582	69,114,310

Order	Distributor	DFA SE	DFA NE	MDVA	CMPA	Land O'Lakes	Cumberland Valley	Mt. Joy	Lanco-Pennland	Cobblestone	Total Base Assignment
5	Borden Dairy KY			421,678							421,678
1	Cloverland Farms Dairy	41,289									41,289
1	Crowley Foods	271,717									271,717
5	Dairy Fresh	7,878,132									7,878,132
1	Dutch Valley Foods					309,681					309,681
5	Maola High Point				4,144,287						4,144,287
5	Homestead Creamery			336,594							336,594
1	HP Hood	1,295,198		1,295,198		823,341					3,413,738
5	Land-O-Sun Spartanburg	250,837									250,837
1	Marva Maid Landover			8,489,897			254,279				8,744,176
5	Marva Maid Newport News	9,671,608		1,869,941	3,854,262				3,204,694	34,202	18,634,708
5	Mayfield	552,446									552,446
5	Milkco	1,875,218									1,875,218
33	Nestle	271,651									271,651
VA	Potomac Farms			362,974							362,974
7	Saputo - KY	282,692									282,692
1	Saputo - NY	143,916									143,916
33	Superior Dairy			1,810,431							1,810,431
1	Tuscan Lehigh Dairies	507,233	418,792					120,550			1,046,574
33	United Dairy	1,756,690			5,270,069						7,026,759
1	Upstate Niagara			517,640							517,640
1	Wawa Dairy								449,936		449,936
5	Westover Dairy			6,755,583							6,755,583
VA	White Wave Mt. Crawford				990,427						990,427
5	Winchester Farms	27,273									27,273
1	Dairy Maid	1,794,456									1,794,456
<b>TOTAL</b>		<b>26,620,357</b>	<b>418,792</b>	<b>21,859,936</b>	<b>14,259,045</b>	<b>1,133,022</b>	<b>254,279</b>	<b>120,550</b>	<b>3,654,630</b>	<b>34,202</b>	<b>68,354,812</b>

<b>9-month Base Minus Total</b>				<b>(0)</b>	<b>0</b>						<b>0</b>
---------------------------------	--	--	--	------------	----------	--	--	--	--	--	----------

Virginia State Milk Commission  
Base Assignment System  
September 2022  
CORRECTION 0922 FINAL

	DFA SE	DFA NE	MDVA	CMPA	Land O'Lakes	Cumberland Valley	Mt. Joy	Lanco-Pennland	Cobblestone	Established Base Total
<b>Established 9-month Base</b>	26,916,139	423,445	22,102,824	14,417,479	1,145,611	257,104	121,889	3,695,237	34,582	69,114,310
<b>Corrected 9-month Base</b>	26,966,139	423,445	21,809,447	14,004,995	1,183,611	257,104	121,889	3,654,463	693,217	69,114,310

Order	Distributor	DFA SE	DFA NE	MDVA	CMPA	Land O'Lakes	Cumberland Valley	Mt. Joy	Lanco-Pennland	Cobblestone	Total Base Assignment
5	Borden Dairy KY			421,678							421,678
1	Cloverland Farms Dairy	41,289									41,289
1	Crowley Foods	271,717									271,717
5	Dairy Fresh	7,878,132									7,878,132
1	Dutch Valley Foods					309,681					309,681
5	Maola High Point				4,144,287						4,144,287
5	Homestead Creamery			336,594							336,594
1	HP Hood	1,276,407		1,276,407		860,924					3,413,738
5	Land-O-Sun Spartanburg	250,837									250,837
1	Marva Maid Landover			8,489,897			254,279				8,744,176
5	Marva Maid Newport News	9,739,850		1,598,579	3,446,311				3,164,369	685,599	18,634,708
5	Mayfield	552,446									552,446
5	Milkco	1,875,218									1,875,218
33	Nestle	271,651									271,651
VA	Potomac Farms			362,974							362,974
7	Saputo - KY	282,692									282,692
1	Saputo - NY	143,916									143,916
33	Superior Dairy			1,810,431							1,810,431
1	Tuscan Lehigh Dairies	507,233	418,792					120,550			1,046,574
33	United Dairy	1,756,690			5,270,069						7,026,759
1	Upstate Niagara			517,640							517,640
1	Wawa Dairy								449,936		449,936
5	Westover Dairy			6,755,583							6,755,583
VA	White Wave Mt. Crawford				990,427						990,427
5	Winchester Farms	27,273									27,273
1	Dairy Maid	1,794,456									1,794,456
<b>TOTAL</b>		<b>26,669,808</b>	<b>418,792</b>	<b>21,569,783</b>	<b>13,851,094</b>	<b>1,170,604</b>	<b>254,279</b>	<b>120,550</b>	<b>3,614,304</b>	<b>685,599</b>	<b>68,354,812</b>

<b>9-month Base Minus Total</b>		<b>0</b>								
---------------------------------	--	----------	--	--	--	--	--	--	--	--



September 2022 Producer Base Transfers

Date Received	Effective Date	Cooperative	Action	Status	Transfer	Producer Name	License	9-Month	3-Month	Adj 9-Month	Adj 3-Month
August 17, 2022	September 1, 2022	CMPA	Total Transfer	UN	220902	Quinn R Linkenauger	003310	44,059	40,534	0	0
August 17, 2022	September 1, 2022	CMPA	Increase	CO	220902	Robert L And/Or Freda Rutrough	005281	217,648	200,236	247,648	227,836
August 17, 2022	September 1, 2022	LPQM	Increase	UN	220902	Whispering Pines Dairy, LLC	005428	131,583	121,056	145,642	133,990
August 17, 2022	September 1, 2022	CMPA	Partial Transfer	CO	220903	Green Bluff Farm	005176	226,352	208,244	211,352	194,444
August 17, 2022	September 1, 2022	CMPA	Increase	UN	220903	R & S Dairy LLC	005312	361,988	333,029	366,988	337,629
August 17, 2022	September 1, 2022	CMPA	Increase	UN	220903	Myron and Heidi Yoder	005425	53,945	49,629	63,945	58,829
August 17, 2022	September 1, 2022	CMPA	Partial Transfer	CO	220904	Currin Dairy	005318	347,117	319,348	307,117	282,548
August 17, 2022	September 1, 2022	CMPA	Increase	CO	220904	Robert L And/Or Freda Rutrough	005281	247,648	227,836	249,648	229,676
August 17, 2022	September 1, 2022	LPQM	Increase	UN	220904	Silver Creek Dairy	003228	155,088	142,681	180,088	165,681
August 17, 2022	September 1, 2022	LPQM	Increase	UN	220904	Raymond Heatwole	004696	14,162	13,029	27,162	24,989
August 17, 2022	September 1, 2022	CMPA	Partial Transfer	CO	220905	Hills-Dale Farm	003755	60,125	55,315	5,125	4,715
August 17, 2022	September 1, 2022	LPQM	Increase	UN	220905	Raymond Heatwole	004696	27,162	24,989	44,162	40,629
August 17, 2022	September 1, 2022	LOLC	Increase	UN	220905	Keystone Dairy Venture	005172	715,646	658,394	753,646	693,354
August 17, 2022	September 1, 2022	CMPA	Partial Transfer	CO	220906	B & A Dairy	005329	78,884	72,573	48,884	44,973
August 17, 2022	September 1, 2022	CMPA	Increase	CO	220906	Hills-Dale Farm	003755	5,125	4,715	35,125	32,315
August 6, 2022	September 1, 2022	CMPA	Partial Transfer	CO	220907	Marysville Dairy LLC	005313	286,999	264,039	161,114	148,225
August 6, 2022	September 1, 2022	COBB	Increase	UN	220907	Barny Bay Dairy Inc	000082	34,582	31,815	160,467	147,629
August 6, 2022	September 1, 2022	CMPA	Partial Transfer	CO	220908	Norman A Booth	003231	102,684	94,469	91,781	84,438
August 6, 2022	September 1, 2022	COBB	Increase	UN	220908	Barny Bay Dairy Inc	000082	160,467	147,630	171,370	157,661
August 6, 2022	September 1, 2022	CMPA	Partial Transfer	CO	220909	Robert L And/Or Freda Rutrough	005281	249,648	229,676	175,898	161,826
August 6, 2022	September 1, 2022	COBB	Increase	UN	220909	Barny Bay Dairy Inc	000082	171,370	157,660	245,120	225,510
August 23, 2022	September 1, 2022	LPQM	Partial Transfer	UN	220910	Peaceful Pine Hollow	004392	188,156	173,104	78,323	72,058
August 23, 2022	September 1, 2022	COBB	Increase	UN	220910	Barny Bay Dairy Inc	000082	245,120	225,510	354,953	326,556
August 24, 2022	September 1, 2022	CMPA	Partial Transfer	UN	220911	R & S Dairy LLC	005312	366,988	337,629	322,101	296,333
August 24, 2022	September 1, 2022	MDVA	Issue	UN	220911	Samuel Stoltzfoos	005429	0	0	44,887	41,296
August 25, 2022	September 1, 2022	MDVA	Total Transfer	UN	220912	Interstate Dairy LLC	004399	197,987	182,148	0	0
August 25, 2022	September 1, 2022	COBB	Increase	UN	220912	Barny Bay Dairy Inc	000082	354,953	326,557	552,940	508,705
August 30, 2022	September 1, 2022	MDVA	Partial Transfer	UN	220913	North Mountain Dairy LLC	004985	159,537	146,774	19,260	17,719
August 30, 2022	September 1, 2022	COBB	Increase	UN	220913	Barny Bay Dairy Inc	000082	552,940	508,705	693,217	637,760
August 30, 2022	September 1, 2022	CMPA	Partial Transfer	UN	220914	Poor House Dairy LLC	005427	270,891	249,220	220,891	203,220
August 30, 2022	September 1, 2022	DFAS	Increase	UN	220914	Boot Hill Dairy LLC	000778	340,070	312,864	390,070	358,864
August 31, 2022	September 1, 2022	MDVA	Total Transfer	CO	220915	Gary W McDonald	002220	84,317	77,572	0	0
August 31, 2022	September 1, 2022	MDVA	Increase	CO	220915	Coldsprings Farm	002739	1,451,770	1,335,628	1,536,087	1,413,200
August 31, 2022	September 1, 2022	MDVA	Total Transfer	CO	220916	Clyde C Crum & Son Inc	003670	91,785	84,442	0	0
August 31, 2022	September 1, 2022	MDVA	Increase	CO	220916	Coldsprings Farm	002739	1,536,087	1,413,200	1,627,872	1,497,642

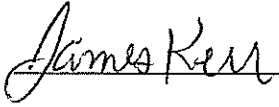
Virginia State Milk Commission  
Base Assignment System  
October 2022

Established 9-month Base	DFA SE	DFA NE	MDVA	CMPA	Land O'Lakes	Cumberland Valley	Mt. Joy	Lanco-Pennland	Cobblestone	Established Base Total
	26,966,139	423,445	21,809,447	14,004,995	1,183,611	257,104	121,889	3,654,463	693,217	69,114,310

Order	Distributor	DFA SE	DFA NE	MDVA	CMPA	Land O'Lakes	Cumberland Valley	Mt. Joy	Lanco-Pennland	Cobblestone	Total Base Assignment
5	Borden Dairy KY			452,678							452,678
1	Cloverland Farms Dairy	46,349									46,349
1	Crowley Foods	218,762									218,762
5	Dairy Fresh	7,450,873									7,450,873
1	Dutch Valley Foods					306,635					306,635
5	Maola High Point				4,262,068						4,262,068
5	Homestead Creamery			497,462							497,462
1	HP Hood	1,331,226		1,331,226		902,990					3,565,442
5	Land-O-Sun Spartanburg	296,539									296,539
1	Marva Maid Landover			8,750,157			262,755				9,012,912
5	Marva Maid Newport News	10,668,210		1,730,326	3,295,966				3,233,459	708,453	19,636,413
5	Mayfield	646,781									646,781
5	Milkco	1,969,699									1,969,699
33	Nestle	322,221									322,221
VA	Potomac Farms			396,039							396,039
7	Saputo - KY	196,087									196,087
1	Saputo - NY	141,096									141,096
33	Superior Dairy			1,786,416							1,786,416
1	Tuscan Lehigh Dairies	539,548	432,751					124,568			1,096,868
33	United Dairy	1,894,555			5,683,665						7,578,220
1	Upstate Niagara			565,911							565,911
1	Wawa Dairy								501,322		501,322
5	Westover Dairy			6,778,560							6,778,560
VA	White Wave Mt. Crawford				1,071,099						1,071,099
5	Winchester Farms	26,459									26,459
1	Dairy Maid	1,810,394									1,810,394
<b>TOTAL</b>		<b>27,558,801</b>	<b>432,751</b>	<b>22,288,776</b>	<b>14,312,797</b>	<b>1,209,624</b>	<b>262,755</b>	<b>124,568</b>	<b>3,734,781</b>	<b>708,453</b>	<b>70,633,306</b>

<b>9-month Base Minus Total</b>										<b>(0)</b>	
---------------------------------	--	--	--	--	--	--	--	--	--	------------	--

Respectfully submitted,



---

Mr. James Kerr  
Chairman



---

Crafton Wilkes  
Administrator