

## FINAL MINUTES

### Milk Commission Meeting Held September 21, 2016

Minutes of the meeting of the Milk Commission, held at the Virginia Department of Agriculture and Consumer Services located at 102 Governor Street, Richmond, VA 23219.

#### THE COMMISSION:

PRESENT: Kenneth Smith, Chairperson; Patrick Crawford, Commissioner; Gerald Heatwole, Commissioner; Bruce E. Mayer; Commissioner; John Swanson, Commissioner; Robb Watters, Commissioner; Crafton Wilkes, Administrator; Jessica Roberts, Auditor II.

#### Absent:

Kate Blair Farmer, Commissioner

The Chairperson called the meeting to order at 1:30 P.M.

Kenneth Smith asked for a motion to accept the minutes from the previous meeting. As there was no discussion, Gerald Heatwole so moved and Patrick Crawford seconded the motion. The Administrator noted that Mr. Smith had served his full term as Chairperson, and the board should elect a new chair. A brief discussion was held, and Gerald Heatwole was nominated by Patrick Crawford, seconded by Robb Watters. The board members in attendance voted unanimously in favor of the selection.

The Administrator gave a review of Class I sales, producer price and production, and industry changes. Class I sales declined unusually over the summer, which is likely attributable to a retailer shift in suppliers, and commonly occurs in similar situations or processing plant closures. The Administrator noted that often these sales are discovered on audit when a thorough review of sales and locations is performed. The Class I Producer Price has risen significantly since the previous meeting, but forecasts are not optimistic for this to continue through the end of the year. Milk production across the state is down two percent compared to 2015, and production by producers who have Milk Commission base is down nearly four percent. The Administrator mentioned that Milk Commission auditors have noticed a significant increase in retail price complaints. Investigations have increased over 300% over previous years, which has added to the auditors' workload.

The Administrator presented a request for a processing general distributor license for Dutch Valley Food Company, Inc., trading as Weis Markets. The processor and retailer will enter Virginia markets at the end of October as a result of a merger between two retailers and subsequent divestiture of stores in select areas. The applicant has agreed to comply with the Rules and Regulations of the Commission, and report Virginia milk sales to the Commission through a monthly report. Through a motion so moved by Kenneth Smith and seconded by John Swanson, the board approved the application.

Commission members discussed the hardships dairy producers currently face, with the producer members noting that 2016 will be comparable to 2009, widely considered to be one of the worst years economically for dairy producers in the US. Speculation as to why this year has been so bad was discussed, including the growth of alternative beverages and a slowing export market. Potential for a dairy market in Cuba was also mentioned a possible bright spot in the future.

The meeting opened for public comment. There was no public comment.

<u>License Number</u>	<u>License Type</u>	<u>Distributor</u>	<u>Company Representative</u>	<u>Market</u>	<u>Action</u>
346.000.1	PGD	Dutch Valley Food Company, Inc.	Laurence Bates	All	Approve



Commonwealth of Virginia  
Virginia State Milk Commission  
Crafton O. Wilkes, Administrator  
[www.vdacs.virginia.gov/food-state-milk-commission](http://www.vdacs.virginia.gov/food-state-milk-commission)

102 Governor Street  
Suite 205  
Richmond, VA 23219  
Tel: 804-786-2013  
Fax: 804-371-8700

**Announcement of Producer Class I Price at 3.5% Butterfat**

**September 2016**

	JUL 2016	AUG 2016	SEP 2016
<b>Eastern Market</b>			
Established Price	\$8.46	\$8.46	\$8.46
Add Adjustment (per §2VAC15-20-81)	\$11.34	\$12.71	\$14.19
<b>Eastern Market Class I Price (per cwt)</b>	<b>\$19.80</b>	<b>\$21.17</b>	<b>\$22.65</b>
Eastern Market Skim Price (per cwt)	11.6695	12.2595	14.2695
Eastern Market Butterfat Price (per lb)	2.4399	2.6683	2.5385
<b>Western Market</b>			
Established Price	\$8.16	\$8.16	\$8.16
Add Adjustment (per §2VAC15-20-81)	\$11.44	\$12.81	\$14.29
<b>Western Market Class I Price (per cwt)</b>	<b>\$19.60</b>	<b>\$20.97</b>	<b>\$22.45</b>
Western Market Skim Price (per cwt)	11.4695	12.0595	14.0695
Western Market Butterfat Price (per lb)	2.4379	2.6663	2.5365
<b>Southwestern Market</b>			
Established Price	\$7.96	\$7.96	\$7.96
Add Adjustment (per §2VAC15-20-81)	\$10.87	\$12.23	\$13.72
<b>Southwestern Market Class I Price (per cwt)</b>	<b>\$18.83</b>	<b>\$20.19</b>	<b>\$21.68</b>
Southwestern Market Skim Price (per cwt)	10.6950	11.2850	13.2950
Southwestern Market Butterfat Price (per lb)	2.4302	2.6586	2.5288
<b>Class II Price Announcement Date</b>	<b>AUG 3, 2016</b>	<b>AUG 31, 2016</b>	<b>OCT 5, 2016</b>
<b>Milk Commission Class II Price (per cwt)</b>	<b>\$15.16</b>		
Milk Commission Class II Skim Price (per cwt)	\$6.2700	\$6.7100	\$6.7900
Milk Commission Class II Butterfat Price (per lb)	2.6034		
Milk Commission Bi-Monthly Index	322.3	325.2	333.1
Milk Commission Assessment Rate (per cwt)	0.03950	0.03950	0.03950
Federal Order Base Class I Price (per cwt)	\$13.70	\$15.07	\$16.56

**September 2016 Highlights**

**Next Announcement: Sep. 21, 2016**

-The Eastern Market Class I price for September increased over August by \$1.49 per cwt. The skim price increased by \$2.01 per cwt, and the butterfat price decreased by \$0.13 per lb.

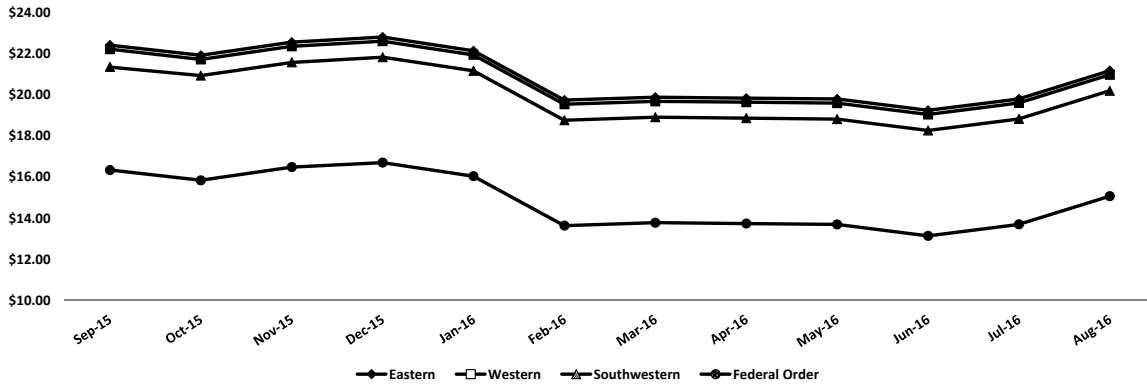
-The Western Market Class I price for September increased over August by \$1.49 per cwt. The skim price increased by \$2.01 per cwt, and the butterfat price decreased by \$0.13 per lb.

-The Southwestern Market Class I price for September increased over August by \$1.49 per cwt. The skim price increased by \$2.01 per cwt, and the butterfat price decreased by \$0.13 per lb.

Virginia State Milk Commission  
Class I Price Dashboard  
September 2016

Months Plotted: 12

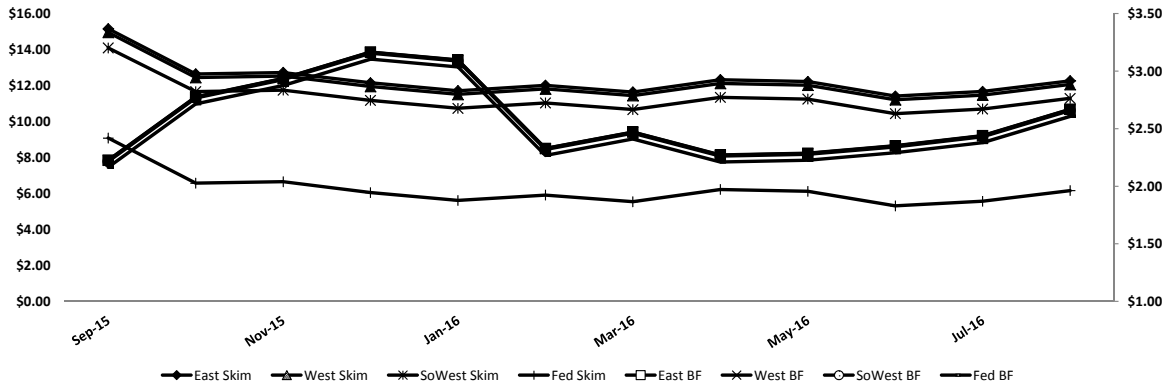
Class I Price by Market



Class I Price (per cwt)				
	Eastern	Western	Southwestern	Federal Order*
12-Month High	\$22.80	\$22.60	\$21.83	\$16.71
12-Month Low	\$19.24	\$19.04	\$18.27	\$13.14
12-Month Avg.	\$20.94	\$20.74	\$19.96	\$14.85
<b>Current Month</b>	<b>\$22.65</b>	<b>\$22.45</b>	<b>\$21.68</b>	<b>\$16.56</b>

\*The Federal Order Class I Price is a baseline price, and does not factor in location differentials

Class I Component Price by Market

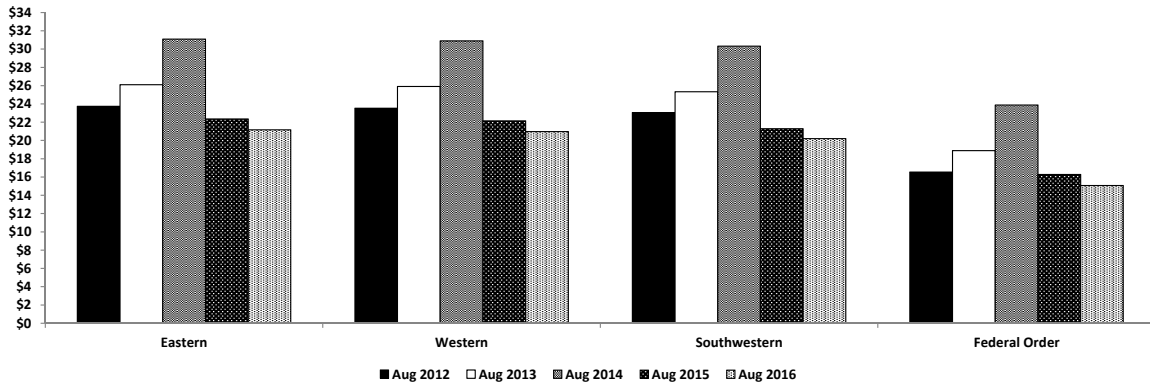


Class I Component Price								
	Eastern Skim (per cwt)	Eastern Butterfat (per lb)	Western Skim (per cwt)	Western Butterfat (per lb)	Southwestern Skim (per cwt)	Southwestern Butterfat (per lb)	Federal Order Skim (per cwt)	Federal Order Butterfat (per lb)
12-Month High	\$15.1545	\$3.1658	\$14.9545	\$3.1638	\$14.0885	\$3.1561	\$9.0800	\$3.1048
12-Month Low	\$11.4095	\$2.2260	\$11.2095	\$2.2240	\$10.4350	\$2.2154	\$5.3100	\$2.1653
12-Month Avg.	\$12.3258	\$2.5850	\$12.1258	\$2.5830	\$11.3423	\$2.5751	\$6.2325	\$2.5240
<b>Current Month</b>	<b>\$14.2695</b>	<b>\$2.5385</b>	<b>\$14.0695</b>	<b>\$2.5365</b>	<b>\$13.2950</b>	<b>\$2.5288</b>	<b>\$8.1700</b>	<b>\$2.4775</b>

Virginia State Milk Commission  
 Class I Price Dashboard  
 September 2016

Type: **Annual**

**Class I Price Comparison**



Class I Price Comparison by Month

	Aug 2012	Aug 2013	Aug 2014	Aug 2015	Aug 2016
Eastern	\$23.73	\$26.10	\$31.09	\$22.35	\$21.17
Western	\$23.53	\$25.90	\$30.89	\$22.15	\$20.97
Southwestern	\$23.06	\$25.33	\$30.32	\$21.29	\$20.19
Federal Order	\$16.55	\$18.88	\$23.87	\$16.28	\$15.07



VIRGINIA DEPARTMENT  
OF AGRICULTURE AND  
CONSUMER SERVICES

Commonwealth of Virginia  
Virginia State Milk Commission  
Crafton O. Wilkes, Administrator  
[www.vdacs.virginia.gov/food-state-milk-commission](http://www.vdacs.virginia.gov/food-state-milk-commission)

102 Governor Street  
Suite 205  
Richmond, VA 23219  
Tel: 804-786-2013  
Fax: 804-371-8700

---

**Announcement of Producer Class II Price at 3.5% Butterfat****August 2016**

---

	JUN 2016	JUL 2016	AUG 2016
<b>State Milk Commission Class II Price (per cwt)</b>	\$14.12	\$15.16	<b>\$15.21</b>
Class II Skim Price (per cwt)	5.8600	6.2700	6.7100
Class II Butterfat Price (per lb)	2.4179	2.6034	2.4943

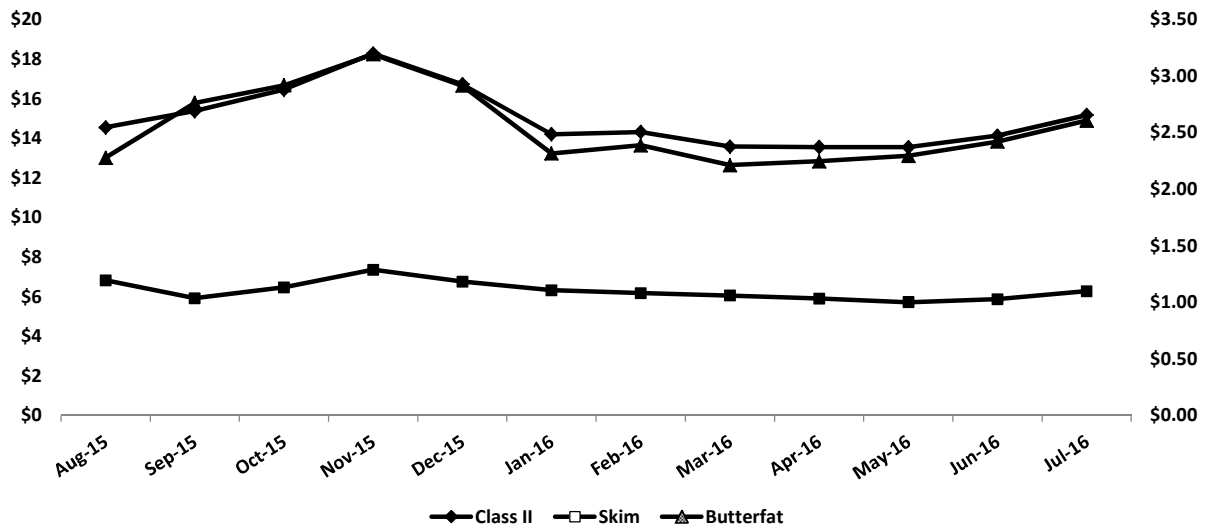
**August 2016 Highlights****Next Announcement: Oct. 5, 2016**

-The Class II price for August increased over July by \$0.04 per cwt. The Class II Skim price increased by \$0.44 per cwt, and the Class II Butterfat price decreased by \$0.11 per lb.

Virginia State Milk Commission  
Class II Dashboard  
August 2016

Months Plotted: 12

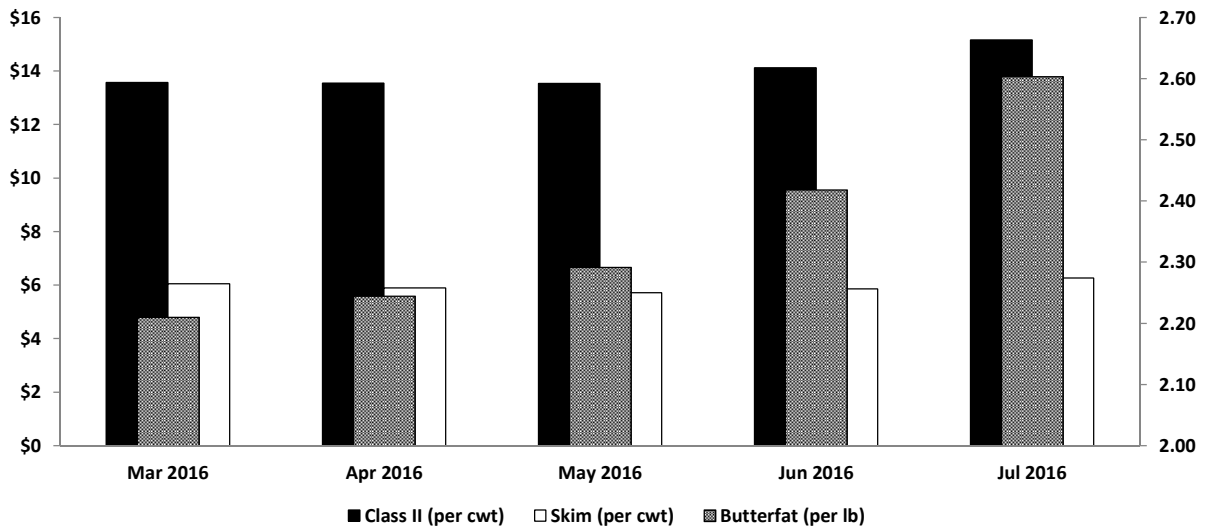
Class II and Component Price



	Class II (per cwt)	Skim (per cwt)	Butterfat (per lb)
12-Month High	\$18.26	\$7.3500	\$3.1900
12-Month Low	\$13.53	\$5.7100	\$2.2098
12-Month Avg.	\$15.02	\$6.2482	\$2.5676
<b>Current Month</b>	<b>\$15.21</b>	<b>\$6.7100</b>	<b>\$2.4943</b>

Comparison: Monthly

Class II Price Comparison



	Mar 2016	Apr 2016	May 2016	Jun 2016	Jul 2016
Class II (per cwt)	\$13.57	\$13.54	\$13.53	\$14.12	\$15.16
Skim (per cwt)	\$6.0500	\$5.8900	\$5.7100	\$5.8600	\$6.2700
Butterfat (per lb)	\$2.2098	\$2.2446	\$2.2916	\$2.4179	\$2.6034

Virginia State Milk Commission  
Base Assignment System  
July 2016  
CORRECTION 07A-07B

	DFA SE	DFA NE	MDVA	CMPA	Land O'Lakes	Cumberland Valley	Mt. Joy	DFA ME		Established Base Total
Established 3-month Base	27,914,207	463,002	23,965,069	14,295,278	802,967	250,631	236,422			67,927,576
Corrected 3-month Base	27,975,585	463,002	23,952,828	14,233,900	802,967	250,631	236,422	12,241		67,927,576

Order	Distributor	DFA SE	DFA NE	MDVA	CMPA	Land O'Lakes	Cumberland Valley	Mt. Joy	DFA ME		Total Base Assignment
5	Borden Dairy KY			311,550							311,550
33	Broughton Foods	162,361									162,361
1	Cloverland Farms Dairy			3,275,202			253,356				3,528,558
1	Crowley Foods	630,577									630,577
1	Cumberland Dairy					201,041					201,041
5	Dairy Fresh	2,449,529		386,641	2,338,160						5,174,330
5	Harris Teeter				876,567						876,567
5	Homestead Creamery				372,022						372,022
1	HP Hood			1,269,425		386,040					1,655,465
5	Land-O-Sun Spartanburg			244,583							244,583
1	Marva Maid Landover			411,845							411,845
VA	Marva Maid Newport News	849,339		5,096,036	2,548,018						8,493,393
5	Mayfield			2,817,857							2,817,857
5	Milkco			1,938,756							1,938,756
33	Nestle	339,818									339,818
5	PET Richmond	9,886,544		3,603,425	8,253,850						21,743,818
VA	Potomac Farms			386,340							386,340
7	Saputo Dairy KY	263,692									263,692
1	Saputo Foods NY	403,106									403,106
33	Superior Dairy	1,240,265									1,240,265
1	Swiss Premium Dairy			2,768,893							2,768,893
1	Tuscan Lehigh Dairies		468,034			224,614		238,992			931,640
33	United Dairy	4,968,367									4,968,367
1	Upstate Niagara			276,285							276,285
1	Wawa Dairy			427,607							427,607
5	Westover Dairy	7,047,080									7,047,080
VA	White Wave Mt. Crawford			998,741							998,741
5	Winchester Farms	38,990							12,374		51,364
<b>TOTAL</b>		<b>28,279,668</b>	<b>468,034</b>	<b>24,213,185</b>	<b>14,388,616</b>	<b>811,695</b>	<b>253,356</b>	<b>238,992</b>	<b>12,374</b>		<b>68,665,919</b>

<b>3-month Base Minus Total</b>	<b>0</b>	<b>0</b>	<b>0</b>	<b>0</b>	<b>0</b>	<b>0</b>	<b>0</b>	<b>0</b>	<b>0</b>	<b>0</b>	<b>(0)</b>
---------------------------------	----------	----------	----------	----------	----------	----------	----------	----------	----------	----------	------------

**Virginia State Milk Commission  
Base Assignment System  
July 2016**

Virginia Base				
Base Assignable to Virginia Plants:	9,878,474	Percentage of Base Assignable to Virginia Plants:		14.824184%
	<b>DFA</b>	<b>MDVA</b>	<b>CMPA</b>	<b>TOTAL</b>
Assignable Base:	28,450,828	23,952,828	14,233,900	66,637,556
Virginia Plant Base Assignment:	4,217,603	3,550,811	2,110,060	9,878,474
<b>Virginia Plants</b>	<b>DFA</b>	<b>MDVA</b>	<b>CMPA</b>	
Marva Maid Newport News:	4,217,603	2,165,730	2,110,060	8,493,393
Potomac Farms		386,340		386,340
White Wave Mt. Crawford		998,741		998,741
<b>Total</b>	4,217,603	3,550,811	2,110,060	9,878,474

	<b>DFA</b>	<b>MDVA</b>	<b>CMPA</b>	<b>Land O'Lakes</b>	<b>Cumberland Valley</b>	<b>Mt. Joy</b>	
Base Assigned to Virginia Plants:	849,339	6,481,117	2,548,018				
Percent of Total Base Assigned to Virginia Plants (%):	<b>2.95%</b>	<b>26.77%</b>	<b>17.71%</b>				
Base Assigned to Fully Regulated Federal Order Plants:	27,910,737	17,732,068	11,840,599	811,695	253,356	238,992	
Percent of Total Base Assigned to Federal Order Plants (%):	<b>97.05%</b>	<b>73.23%</b>	<b>82.29%</b>	<b>100.00%</b>	<b>100.00%</b>	<b>100.00%</b>	
Total Base Assigned:	28,760,076	24,213,185	14,388,616	811,695	253,356	238,992	
Assigned Base (From Base worksheet):	28,760,076	24,213,185	14,388,616	811,695	253,356	238,992	
Variance (Total Base Assigned - Assigned Base):							
Base Assigned to Federal Order 1 (%):	5.22%	34.81%		100.00%	100.00%	100.00%	
Base Assigned to Federal Order 5 (%):	67.57%	38.42%	82.29%				
Base Assigned to Federal Order 7 (%):	0.92%						
Base Assigned to Federal Order 33 (%):	23.33%						
Total Base Assigned to Federal Order Plants (%):	<b>97.05%</b>	<b>73.23%</b>	<b>82.29%</b>	<b>100.00%</b>	<b>100.00%</b>	<b>100.00%</b>	



**Virginia State Milk Commission  
Producer Base Transfers  
For Commission Approval: September 21, 2016**

The Administrator read and considered the following producer base transfer requests and made the required corrections to monthly processor base assignments:

Date Received	Effective Date	Cooperative	Consigned	Action	Transfer Number	Producer Name	License Number	Previous Base		Adjusted Base	
								9-Month	3-Month	9-Month	3-Month
June 22, 2016	July 1, 2016	MDVA	No	Cooperative Change	07A	Misty Lake Dairy LLC	005207	13,022	12,241	13,022	12,241
June 22, 2016	July 1, 2016	DFA ME	No	Cooperative Change	07A	Misty Lake Dairy LLC	005207	13,022	12,241	13,022	12,241
June 21, 2016	July 1, 2016	Land O'Lakes	Yes	Cancel	--	Weary's Dairy	004994	28,903	27,169	0	0
June 21, 2016	July 1, 2016	Land O'Lakes	Yes	Increase	--	Hershey Duane, T/A Ar-Joy Farm	005251	57,807	54,338	86,710	81,507
June 29, 2016	July 1, 2016	CMPA	Yes	Amend	--	Rohrer James A & Irene M, T/A Rocky River Farm	005239	65,296	61,378	65,296	61,378
June 29, 2016	July 1, 2016	CMPA	No	Amend	--	Rohrer James A & Irene M, T/A Rocky River Farm	005239	65,296	61,378	65,296	61,378
June 28, 2016	July 1, 2016	CMPA	No	Cooperative Change	07B	Rohrer James A & Irene M, T/A Rocky River Farm	005239	65,296	61,378	65,296	61,378
June 28, 2016	July 1, 2016	DFA	No	Cooperative Change	07B	Rohrer James A & Irene M, T/A Rocky River Farm	005239	65,296	61,378	65,296	61,378
June 24, 2016	July 1, 2016	DFA	No	Partial Transfer	0704	Bishop Kyle N & Son	000109	58,320	54,820	38,820	36,490
June 24, 2016	July 1, 2016	DFA	No	Issue	0704	Bogges Dairy Inc.	005274	0	0	19,500	18,330
June 28, 2016	July 1, 2016	CMPA	Yes	Partial Transfer	0702	J-Team Dairy LLC	004873	364,097	342,251	332,847	312,876
June 28, 2016	July 1, 2016	CMPA	Yes	Increase	0702	Rutrough Robert L & Freda D	005246	213,548	200,735	244,798	230,110
June 28, 2016	July 1, 2016	CMPA	Yes	Partial Transfer	0703	Rhodes Linden J	004575	180,984	170,125	90,984	85,525
June 28, 2016	July 1, 2016	CMPA	Yes	Increase	0703	Bowman Emery &/or Cheryl	004736	13,847	13,016	103,847	97,616
June 30, 2016	July 1, 2016	CMPA	Yes	Total Transfer	0705	Beaver Dam Farm Inc	004969	29,095	27,349	0	0
June 30, 2016	July 1, 2016	CMPA	Yes	Increase	0705	Hooley David J T/A Green Bluff Farm	005176	156,616	147,219	170,711	160,468
June 30, 2016	July 1, 2016	CMPA	No	Increase	0705	Riverside Dairy LLC	004364	118,649	111,530	133,649	125,630
July 12, 2016	July 1, 2016	MDVA	Yes	Cancel	--	Byers Benjamin F	002555	43,022	40,441	0	0
July 12, 2016	July 1, 2016	MDVA	Yes	Increase	--	Watt Jerry L/Barbara S	004239	10,089	9,483	53,111	49,924
July 12, 2016	July 1, 2016	MDVA	Yes	Cancel	--	Burdette HW FE & WS	003913	22,165	20,835	0	0
July 12, 2016	July 1, 2016	MDVA	Yes	Increase	--	Rotz Milton E	003843	37,586	35,331	59,751	56,166
July 12, 2016	July 1, 2016	MDVA	Yes	Cancel	--	New Design Acres LLC	003665	10,794	10,147	0	0
July 12, 2016	July 1, 2016	MDVA	Yes	Increase	--	Glade Haven Farms LLC Roderick David I & Joshua M	004013	18,973	17,834	29,767	27,981
July 13, 2016	July 16, 2016	MDVA	No	Total Transfer	0706	Priest GERALD L or Heidi M	005244	42,714	40,151	0	0
July 13, 2016	July 16, 2016	MDVA	No	Issue	0706	Clearbell Farms LLC	005275	0	0	42,714	40,151
July 14, 2016	July 16, 2016	DFA	No	Partial Transfer	0707	Bowman Andrew D &/or Sheryl A/Oliver Run Dairy	004829	142,378	133,835	75,000	70,500
July 14, 2016	July 16, 2016	DFA	No	Increase	0707	Blackwater Bend Da Inc	002117	118,475	111,367	185,853	174,702

Virginia State Milk Commission  
Base Assignment System  
July 2016  
CORRECTION 0707-07C

	DFA SE	DFA NE	MDVA	CMPA	Land O'Lakes	Cumberland Valley	Mt. Joy	DFA ME		Established Base Total
Established 3-month Base	27,975,585	463,002	23,952,828	14,233,900	802,967	250,631	236,422	12,241		67,927,576
Corrected 3-month Base	28,002,684	463,002	23,952,828	14,206,802	802,967	250,631	236,422	12,241		67,927,576

Order	Distributor	DFA SE	DFA NE	MDVA	CMPA	Land O'Lakes	Cumberland Valley	Mt. Joy	DFA ME		Total Base Assignment
5	Borden Dairy KY			328,510							328,510
33	Broughton Foods	171,200									171,200
1	Cloverland Farms Dairy			3,467,292			253,356				3,720,647
1	Crowley Foods	664,904									664,904
1	Cumberland Dairy					211,985					211,985
5	Dairy Fresh	2,582,878		407,689	2,465,446						5,456,013
5	Harris Teeter				924,287						924,287
5	Homestead Creamery				392,274						392,274
1	HP Hood			1,421,208		324,378					1,745,586
5	Land-O-Sun Spartanburg			257,898							257,898
1	Marva Maid Landover			434,266							434,266
VA	Marva Maid Newport News	895,576		5,373,457	2,686,728						8,955,761
5	Mayfield			2,971,257							2,971,257
5	Milkco			2,044,299							2,044,299
33	Nestle	358,317									358,317
5	PET Richmond	8,911,967		2,384,989	7,892,489						19,189,445
VA	Potomac Farms			407,372							407,372
7	Saputo Dairy KY	278,047									278,047
1	Saputo Foods NY	425,051									425,051
33	Superior Dairy	1,307,784									1,307,784
1	Swiss Premium Dairy			2,919,627							2,919,627
1	Tuscan Lehigh Dairies		468,034			275,331		238,992			982,357
33	United Dairy	5,238,838									5,238,838
1	Upstate Niagara			291,325							291,325
1	Wawa Dairy			450,885							450,885
5	Westover Dairy	7,430,713									7,430,713
VA	White Wave Mt. Crawford			1,053,111							1,053,111
5	Winchester Farms	41,786							12,374		54,160
<b>TOTAL</b>		<b>28,307,061</b>	<b>468,034</b>	<b>24,213,185</b>	<b>14,361,224</b>	<b>811,695</b>	<b>253,356</b>	<b>238,992</b>	<b>12,374</b>		<b>68,665,919</b>

<b>3-month Base Minus Total</b>	<b>0</b>	<b>0</b>	<b>0</b>	<b>0</b>	<b>0</b>	<b>0</b>	<b>0</b>	<b>0</b>	<b>0</b>	<b>0</b>	<b>0</b>
---------------------------------	----------	----------	----------	----------	----------	----------	----------	----------	----------	----------	----------

**Virginia State Milk Commission  
Base Assignment System  
July 2016**

Virginia Base				
Base Assignable to Virginia Plants:	10,416,244	Percentage of Base Assignable to Virginia Plants:		15.631192%
	<b>DFA</b>	<b>MDVA</b>	<b>CMPA</b>	<b>TOTAL</b>
Assignable Base:	28,477,926	23,952,828	14,206,802	66,637,556
Virginia Plant Base Assignment:	4,451,439	3,744,112	2,220,692	10,416,244
<b>Virginia Plants</b>	<b>DFA</b>	<b>MDVA</b>	<b>CMPA</b>	
Marva Maid Newport News:	4,451,439	2,283,629	2,220,692	8,955,761
Potomac Farms		407,372		407,372
White Wave Mt. Crawford		1,053,111		1,053,111
<b>Total</b>	4,451,439	3,744,112	2,220,692	10,416,244

	<b>DFA</b>	<b>MDVA</b>	<b>CMPA</b>	<b>Land O'Lakes</b>	<b>Cumberland Valley</b>	<b>Mt. Joy</b>
Base Assigned to Virginia Plants:	895,576	6,833,940	2,686,728			
Percent of Total Base Assigned to Virginia Plants (%):	<b>3.11%</b>	<b>28.22%</b>	<b>18.71%</b>			
Base Assigned to Fully Regulated Federal Order Plants:	27,891,892	17,379,245	11,674,495	811,695	253,356	238,992
Percent of Total Base Assigned to Federal Order Plants (%):	<b>96.89%</b>	<b>71.78%</b>	<b>81.29%</b>	<b>100.00%</b>	<b>100.00%</b>	<b>100.00%</b>
Total Base Assigned:	28,787,469	24,213,185	14,361,224	811,695	253,356	238,992
Assigned Base (From Base worksheet):	28,787,469	24,213,185	14,361,224	811,695	253,356	238,992
Variance (Total Base Assigned - Assigned Base):		0				
Base Assigned to Federal Order 1 (%):	5.41%	37.11%		100.00%	100.00%	100.00%
Base Assigned to Federal Order 5 (%):	65.93%	34.67%	81.29%			
Base Assigned to Federal Order 7 (%):	0.97%					
Base Assigned to Federal Order 33 (%):	24.58%					
Total Base Assigned to Federal Order Plants (%):	<b>96.89%</b>	<b>71.78%</b>	<b>81.29%</b>	<b>100.00%</b>	<b>100.00%</b>	<b>100.00%</b>

**Virginia State Milk Commission  
Producer Base Transfers  
For Commission Approval: September 21, 2016**

The Administrator read and considered the following producer base transfer requests and made the required corrections to monthly processor base assignments:

As the Commission made several assumptions in calculating a supply shift, a base assignment adjustment was warranted mid-month as better information came to light.

Date Received	Effective Date	Cooperative	Consigned	Action	Transfer Number	Producer Name	License Number	Previous Base		Adjusted Base	
								9-Month	3-Month	9-Month	3-Month

Virginia State Milk Commission  
Base Assignment System  
August 2016  
CORRECTION 08A

	DFA SE	DFA NE	MDVA	CMPA	Land O'Lakes	Cumberland Valley	Mt. Joy	DFA ME		Established Base Total
Established 3-month Base	28,028,088	463,002	23,952,828	14,181,397	802,967	250,631	236,422	12,241		67,927,576
Corrected 3-month Base	28,080,591	463,002	23,952,828	14,128,895	802,967	250,631	236,422	12,241		67,927,576

Order	Distributor	DFA SE	DFA NE	MDVA	CMPA	Land O'Lakes	Cumberland Valley	Mt. Joy	DFA ME		Total Base Assignment
5	Borden Dairy KY			348,741							348,741
33	Broughton Foods	172,311									172,311
1	Cloverland Farms Dairy			2,092,986			253,356				2,346,342
1	Crowley Foods	597,688									597,688
1	Cumberland Dairy					217,457					217,457
5	Dairy Fresh	2,414,732		381,149	2,304,945						5,100,826
5	Harris Teeter				900,095						900,095
5	Homestead Creamery				371,068						371,068
1	HP Hood			1,843,433		224,705					2,068,138
5	Land-O-Sun Spartanburg			363,331							363,331
1	Marva Maid Landover			475,218							475,218
VA	Marva Maid Newport News	999,793		5,998,759	2,999,379						9,997,931
5	Mayfield			1,965,323							1,965,323
5	Milkco			2,064,633							2,064,633
33	Nestle	332,338									332,338
5	PET Richmond	8,243,530		3,696,979	7,706,982						19,647,492
VA	Potomac Farms			299,546							299,546
7	Saputo Dairy KY	468,032									468,032
1	Saputo Foods NY	414,318									414,318
33	Superior Dairy	2,170,951									2,170,951
1	Swiss Premium Dairy			2,792,812							2,792,812
1	Tuscan Lehigh Dairies		468,034			369,533		238,992			1,076,559
33	United Dairy	5,177,474									5,177,474
1	Upstate Niagara			341,703							341,703
1	Wawa Dairy			467,617							467,617
5	Westover Dairy	7,351,999									7,351,999
VA	White Wave Mt. Crawford			1,080,954							1,080,954
5	Winchester Farms	42,648							12,374		55,021
<b>TOTAL</b>		<b>28,385,815</b>	<b>468,034</b>	<b>24,213,185</b>	<b>14,282,470</b>	<b>811,695</b>	<b>253,356</b>	<b>238,992</b>	<b>12,374</b>		<b>68,665,919</b>

<b>3-month Base Minus Total</b>	<b>0</b>	<b>0</b>	<b>0</b>	<b>(0)</b>	<b>0</b>	<b>0</b>	<b>0</b>	<b>0</b>	<b>0</b>	<b>0</b>	<b>(0)</b>
---------------------------------	----------	----------	----------	------------	----------	----------	----------	----------	----------	----------	------------

**Virginia State Milk Commission  
Base Assignment System  
August 2016**

Virginia Base				
Base Assignable to Virginia Plants:	11,378,431	Percentage of Base Assignable to Virginia Plants:		17.075103%
	<b>DFA</b>	<b>MDVA</b>	<b>CMPA</b>	<b>TOTAL</b>
Assignable Base:	28,555,833	23,952,828	14,128,895	66,637,556
Virginia Plant Base Assignment:	4,875,938	4,089,970	2,412,523	11,378,431
<b>Virginia Plants</b>	<b>DFA</b>	<b>MDVA</b>	<b>CMPA</b>	
Marva Maid Newport News:	4,875,938	2,709,470	2,412,523	9,997,931
Potomac Farms		299,546		299,546
White Wave Mt. Crawford		1,080,954		1,080,954
<b>Total</b>	4,875,938	4,089,970	2,412,523	11,378,431

	<b>DFA</b>	<b>MDVA</b>	<b>CMPA</b>	<b>Land O'Lakes</b>	<b>Cumberland Valley</b>	<b>Mt. Joy</b>	
Base Assigned to Virginia Plants:	999,793	7,379,259	2,999,379				
Percent of Total Base Assigned to Virginia Plants (%):	<b>3.46%</b>	<b>30.48%</b>	<b>21.00%</b>				
Base Assigned to Fully Regulated Federal Order Plants:	27,866,430	16,833,926	11,283,090	811,695	253,356	238,992	
Percent of Total Base Assigned to Federal Order Plants (%):	<b>96.54%</b>	<b>69.52%</b>	<b>79.00%</b>	<b>100.00%</b>	<b>100.00%</b>	<b>100.00%</b>	
Total Base Assigned:	28,866,223	24,213,185	14,282,470	811,695	253,356	238,992	
Assigned Base (From Base worksheet):	28,866,223	24,213,185	14,282,470	811,695	253,356	238,992	
Variance (Total Base Assigned - Assigned Base):	0	0					
Base Assigned to Federal Order 1 (%):	5.13%	33.10%		100.00%	100.00%	100.00%	
Base Assigned to Federal Order 5 (%):	62.58%	36.43%	79.00%				
Base Assigned to Federal Order 7 (%):	1.62%						
Base Assigned to Federal Order 33 (%):	27.21%						
Total Base Assigned to Federal Order Plants (%):	<b>96.54%</b>	<b>69.52%</b>	<b>79.00%</b>	<b>100.00%</b>	<b>100.00%</b>	<b>100.00%</b>	

**Virginia State Milk Commission  
 Producer Base Transfers  
 For Commission Approval: September 21, 2016**

The Administrator read and considered the following producer base transfer requests and made the required corrections to monthly processor base assignments:

Date Received	Effective Date	Cooperative	Consigned	Action	Transfer Number	Producer Name	License Number	Previous Base		Adjusted Base	
								9-Month	3-Month	9-Month	3-Month
July 15, 2016	August 1, 2016	CMPA	No	Cooperative Change	08A	Rhodes Raymond R	004537	55,854	52,503	55,854	52,503
July 15, 2016	August 1, 2016	DFA	No	Cooperative Change	08A	Rhodes Raymond R	004537	55,854	52,503	55,854	52,503
July 26, 2016	August 1, 2016	CMPA	Yes	Partial Transfer	0802	J-Team Dairy LLC	004873	332,847	312,876	122,847	115,476
July 26, 2016	August 1, 2016	CMPA	Yes	Increase	0802	Brookshire Farm LLC	003556	304,641	286,363	344,641	323,963
July 26, 2016	August 1, 2016	CMPA	No	Increase	0802	Dickenson Joe Don &/or Pamela R	001133	386,246	363,071	416,246	391,271
July 26, 2016	August 1, 2016	CMPA	Yes	Increase	0802	Phillip and Phill Goodwin LLC	000520	142,741	134,176	167,741	157,676
July 26, 2016	August 1, 2016	CMPA	Yes	Increase	0802	Hooley David J T/A Green Bluff Farm	005176	170,711	160,468	195,000	183,300
July 26, 2016	August 1, 2016	CMPA	No	Increase	0802	Wenger Alvin D/River VW	003182	122,221	114,888	137,932	129,656
July 26, 2016	August 1, 2016	CMPA	Yes	Increase	0802	Rohrer Gerrold F	004532	130,769	122,923	140,769	132,323
July 26, 2016	August 1, 2016	CMPA	Yes	Issue	0802	David M or Annie E Stoltzfus	005276	0	0	65,000	61,100

Virginia State Milk Commission  
Base Assignment System  
August 2016  
CORRECTION Transfer B

	DFA SE	DFA NE	MDVA	CMPA	Land O'Lakes	Cumberland Valley	Mt. Joy	DFA ME		Established Base Total
Established 3-month Base	28,080,591	463,002	23,952,828	14,128,895	802,967	250,631	236,422	12,241		67,927,576
Corrected 3-month Base	28,080,591	463,002	24,068,304	14,013,418	802,967	250,631	236,422	12,241		67,927,576

Order	Distributor	DFA SE	DFA NE	MDVA	CMPA	Land O'Lakes	Cumberland Valley	Mt. Joy	DFA ME		Total Base Assignment
5	Borden Dairy KY			348,741							348,741
33	Broughton Foods	172,311									172,311
1	Cloverland Farms Dairy			2,092,986			253,356				2,346,342
1	Crowley Foods	597,688									597,688
1	Cumberland Dairy					217,457					217,457
5	Dairy Fresh	2,414,732		381,149	2,304,945						5,100,826
5	Harris Teeter				900,095						900,095
5	Homestead Creamery				371,068						371,068
1	HP Hood			1,843,433		224,705					2,068,138
5	Land-O-Sun Spartanburg			363,331							363,331
1	Marva Maid Landover			475,218							475,218
VA	Marva Maid Newport News	999,793		5,998,759	2,999,379						9,997,931
5	Mayfield			1,965,323							1,965,323
5	Milkco			2,064,633							2,064,633
33	Nestle	332,338									332,338
5	PET Richmond	8,243,530		3,813,711	7,590,251						19,647,492
VA	Potomac Farms			299,546							299,546
7	Saputo Dairy KY	468,032									468,032
1	Saputo Foods NY	414,318									414,318
33	Superior Dairy	2,170,951									2,170,951
1	Swiss Premium Dairy			2,792,812							2,792,812
1	Tuscan Lehigh Dairies		468,034			369,533		238,992			1,076,559
33	United Dairy	5,177,474									5,177,474
1	Upstate Niagara			341,703							341,703
1	Wawa Dairy			467,617							467,617
5	Westover Dairy	7,351,999									7,351,999
VA	White Wave Mt. Crawford			1,080,954							1,080,954
5	Winchester Farms	42,648							12,374		55,021
<b>TOTAL</b>		<b>28,385,815</b>	<b>468,034</b>	<b>24,329,916</b>	<b>14,165,738</b>	<b>811,695</b>	<b>253,356</b>	<b>238,992</b>	<b>12,374</b>		<b>68,665,919</b>

<b>3-month Base Minus Total</b>	<b>(0)</b>	<b>(0)</b>	<b>(0)</b>	<b>(0)</b>	<b>(0)</b>	<b>(0)</b>	<b>(0)</b>	<b>(0)</b>	<b>(0)</b>	<b>(0)</b>	<b>(0)</b>
---------------------------------	------------	------------	------------	------------	------------	------------	------------	------------	------------	------------	------------



**Virginia State Milk Commission  
Base Assignment System  
August 2016**

Virginia Base				
Base Assignable to Virginia Plants:	11,378,431	Percentage of Base Assignable to Virginia Plants:		17.075103%
	<b>DFA</b>	<b>MDVA</b>	<b>CMPA</b>	<b>TOTAL</b>
Assignable Base:	28,555,833	24,068,304	14,013,418	66,637,556
Virginia Plant Base Assignment:	4,875,938	4,109,688	2,392,806	11,378,431
<b>Virginia Plants</b>	<b>DFA</b>	<b>MDVA</b>	<b>CMPA</b>	
Marva Maid Newport News:	4,875,938	2,729,188	2,392,806	9,997,931
Potomac Farms		299,546		299,546
White Wave Mt. Crawford		1,080,954		1,080,954
<b>Total</b>	4,875,938	4,109,688	2,392,806	11,378,431

	<b>DFA</b>	<b>MDVA</b>	<b>CMPA</b>	<b>Land O'Lakes</b>	<b>Cumberland Valley</b>	<b>Mt. Joy</b>	
Base Assigned to Virginia Plants:	999,793	7,379,259	2,999,379				
Percent of Total Base Assigned to Virginia Plants (%):	<b>3.46%</b>	<b>30.33%</b>	<b>21.17%</b>				
Base Assigned to Fully Regulated Federal Order Plants:	27,866,430	16,950,657	11,166,359	811,695	253,356	238,992	
Percent of Total Base Assigned to Federal Order Plants (%):	<b>96.54%</b>	<b>69.67%</b>	<b>78.83%</b>	<b>100.00%</b>	<b>100.00%</b>	<b>100.00%</b>	
Total Base Assigned:	28,866,223	24,329,916	14,165,738	811,695	253,356	238,992	
Assigned Base (From Base worksheet):	28,866,223	24,329,916	14,165,738	811,695	253,356	238,992	
Variance (Total Base Assigned - Assigned Base):	0						
Base Assigned to Federal Order 1 (%):	5.13%	32.94%		100.00%	100.00%	100.00%	
Base Assigned to Federal Order 5 (%):	62.58%	36.73%	78.83%				
Base Assigned to Federal Order 7 (%):	1.62%						
Base Assigned to Federal Order 33 (%):	27.21%						
Total Base Assigned to Federal Order Plants (%):	<b>96.54%</b>	<b>69.67%</b>	<b>78.83%</b>	<b>100.00%</b>	<b>100.00%</b>	<b>100.00%</b>	

**Virginia State Milk Commission  
 Producer Base Transfers  
 For Commission Approval: September 21, 2016**

The Administrator read and considered the following producer base transfer requests and made the required corrections to monthly processor base assignments:

Date Received	Effective Date	Cooperative	Consigned	Action	Transfer Number	Producer Name	License Number	Previous Base		Adjusted Base	
								9-Month	3-Month	9-Month	3-Month
July 28, 2016	August 1, 2016	CMPA	Yes	Amend	--	J-Team Dairy LLC	004873	122,847	115,476	122,847	115,476
July 28, 2016	August 1, 2016	CMPA	No	Amend	--	J-Team Dairy LLC	004873	122,847	115,476	122,847	115,476
July 28, 2016	August 1, 2016	CMPA	No	Cooperative Change	08B	J-Team Dairy LLC	004873	122,847	115,476	122,847	115,476
July 28, 2016	August 1, 2016	MDVA	No	Cooperative Change	08B	J-Team Dairy LLC	004873	122,847	115,476	122,847	115,476
July 22, 2016	August 1, 2016	CMPA	Yes	Total Transfer	0803	Winkle Ruby	001470	114,744	107,859	0	0
July 22, 2016	August 1, 2016	CMPA	Yes	Increase	0803	Bowman Emery &/or Cheryl	004736	103,847	97,616	205,847	193,496
July 22, 2016	August 1, 2016	CMPA	No	Increase	0803	Brower David E & James F	005178	99,665	93,685	112,409	105,664
July 29, 2016	August 1, 2016	DFA	No	Total Transfer	0804	Bishop Kyle N & Son	000109	38,820	36,490	0	0
July 29, 2016	August 1, 2016	DFA	No	Increase	0804	Oakland Farms Inc	001789	30,274	28,458	69,094	64,948
July 29, 2016	August 1, 2016	DFA	No	Partial Transfer	0805	Retreat Dairy FM-CW/KH Green	000991	44,456	41,789	4,456	4,189
July 29, 2016	August 1, 2016	DFA	No	Increase	0805	Oakland Farms Inc	001789	69,094	64,948	109,094	102,548
July 29, 2016	August 1, 2016	CMPA	Yes	Partial Transfer	0806	Nifong Wayne E, T/A Clear View Dairy	005250	47,450	44,603	17,450	16,403
July 29, 2016	August 1, 2016	CMPA	Yes	Increase	0806	Evergreen Ridge Dairy LLC	004717	503,627	473,410	533,627	501,610

Virginia State Milk Commission  
Base Assignment System  
August 2016  
CORRECTION Transfer B2

	DFA SE	DFA NE	MDVA	CMPA	Land O'Lakes	Cumberland Valley	Mt. Joy	DFA ME		Established Base Total
Established 3-month Base	28,080,591	463,002	23,952,828	14,128,895	802,967	250,631	236,422	12,241		67,927,576
Corrected 3-month Base	28,080,591	463,002	24,068,304	14,013,418	802,967	250,631	236,422	12,241		67,927,576

Order	Distributor	DFA SE	DFA NE	MDVA	CMPA	Land O'Lakes	Cumberland Valley	Mt. Joy	DFA ME		Total Base Assignment
5	Borden Dairy KY			345,479							345,479
33	Broughton Foods	170,699									170,699
1	Cloverland Farms Dairy			2,071,038			253,356				2,324,394
1	Crowley Foods	592,097									592,097
1	Cumberland Dairy					215,423					215,423
5	Dairy Fresh	2,392,144		377,583	2,283,384						5,053,112
5	Harris Teeter				891,675						891,675
5	Homestead Creamery				367,596						367,596
1	HP Hood			1,811,983		236,809					2,048,792
5	Land-O-Sun Spartanburg			359,933							359,933
1	Marva Maid Landover			470,773							470,773
VA	Marva Maid Newport News	990,441		5,942,645	2,971,322						9,904,408
5	Mayfield			1,946,939							1,946,939
5	Milkco			2,045,320							2,045,320
33	Nestle	329,230									329,230
5	PET Richmond	7,789,742		4,022,201	7,651,760						19,463,704
VA	Potomac Farms			296,744							296,744
7	Saputo Dairy KY	463,654									463,654
1	Saputo Foods NY	410,443									410,443
33	Superior Dairy	2,150,643									2,150,643
1	Swiss Premium Dairy			2,766,687							2,766,687
1	Tuscan Lehigh Dairies		468,034			359,463		238,992			1,066,489
33	United Dairy	5,771,362									5,771,362
1	Upstate Niagara			338,506							338,506
1	Wawa Dairy			463,243							463,243
5	Westover Dairy	7,283,227									7,283,227
VA	White Wave Mt. Crawford			1,070,842							1,070,842
5	Winchester Farms	42,133							12,374		54,507
<b>TOTAL</b>		<b>28,385,815</b>	<b>468,034</b>	<b>24,329,916</b>	<b>14,165,738</b>	<b>811,695</b>	<b>253,356</b>	<b>238,992</b>	<b>12,374</b>		<b>68,665,919</b>

<b>3-month Base Minus Total</b>											<b>(0)</b>
---------------------------------	--	--	--	--	--	--	--	--	--	--	------------

**Virginia State Milk Commission  
Base Assignment System  
August 2016**

Virginia Base				
Base Assignable to Virginia Plants:	11,271,994	Percentage of Base Assignable to Virginia Plants:		16.915378%
	<b>DFA</b>	<b>MDVA</b>	<b>CMPA</b>	<b>TOTAL</b>
Assignable Base:	28,555,833	24,068,304	14,013,418	66,637,556
Virginia Plant Base Assignment:	4,830,327	4,071,245	2,370,423	11,271,994
<b>Virginia Plants</b>	<b>DFA</b>	<b>MDVA</b>	<b>CMPA</b>	
Marva Maid Newport News:	4,830,327	2,703,658	2,370,423	9,904,408
Potomac Farms		296,744		296,744
White Wave Mt. Crawford		1,070,842		1,070,842
<b>Total</b>	4,830,327	4,071,245	2,370,423	11,271,994

	<b>DFA</b>	<b>MDVA</b>	<b>CMPA</b>	<b>Land O'Lakes</b>	<b>Cumberland Valley</b>	<b>Mt. Joy</b>	
Base Assigned to Virginia Plants:	990,441	7,310,231	2,971,322				
Percent of Total Base Assigned to Virginia Plants (%):	<b>3.43%</b>	<b>30.05%</b>	<b>20.98%</b>				
Base Assigned to Fully Regulated Federal Order Plants:	27,875,782	17,019,685	11,194,416	811,695	253,356	238,992	
Percent of Total Base Assigned to Federal Order Plants (%):	<b>96.57%</b>	<b>69.95%</b>	<b>79.02%</b>	<b>100.00%</b>	<b>100.00%</b>	<b>100.00%</b>	
Total Base Assigned:	28,866,223	24,329,916	14,165,738	811,695	253,356	238,992	
Assigned Base (From Base worksheet):	28,866,223	24,329,916	14,165,738	811,695	253,356	238,992	
Variance (Total Base Assigned - Assigned Base):	0	0					
Base Assigned to Federal Order 1 (%):	5.09%	32.56%		100.00%	100.00%	100.00%	
Base Assigned to Federal Order 5 (%):	60.69%	37.39%	79.02%				
Base Assigned to Federal Order 7 (%):	1.61%						
Base Assigned to Federal Order 33 (%):	29.18%						
Total Base Assigned to Federal Order Plants (%):	<b>96.57%</b>	<b>69.95%</b>	<b>79.02%</b>	<b>100.00%</b>	<b>100.00%</b>	<b>100.00%</b>	

**Virginia State Milk Commission  
Producer Base Transfers  
For Commission Approval: September 21, 2016**

The Administrator read and considered the following producer base transfer requests and made the required corrections to monthly processor base assignments:

As the Commission made several assumptions in calculating a supply shift, a base assignment adjustment was warranted mid-month as better information came to light.

Date Received	Effective Date	Cooperative	Consigned	Action	Transfer Number	Producer Name	License Number	Previous Base		Adjusted Base	
								9-Month	3-Month	9-Month	3-Month

Virginia State Milk Commission  
Base Assignment System  
August 2016  
CORRECTION Transfer C

	DFA SE	DFA NE	MDVA	CMPA	Land O'Lakes	Cumberland Valley	Mt. Joy	DFA ME		Established Base Total
Established 3-month Base	28,080,591	463,002	24,068,304	14,013,418	802,967	250,631	236,422	12,241		67,927,576
Corrected 3-month Base	28,080,591	463,002	24,058,368	14,023,354	802,967	250,631	236,422	12,241		67,927,576

Order	Distributor	DFA SE	DFA NE	MDVA	CMPA	Land O'Lakes	Cumberland Valley	Mt. Joy	DFA ME		Total Base Assignment
5	Borden Dairy KY			348,741							348,741
33	Broughton Foods	172,311									172,311
1	Cloverland Farms Dairy			2,092,986			253,356				2,346,342
1	Crowley Foods	597,688									597,688
1	Cumberland Dairy					217,457					217,457
5	Dairy Fresh	2,414,732		381,149	2,304,945						5,100,826
5	Harris Teeter				900,095						900,095
5	Homestead Creamery				371,068						371,068
1	HP Hood			1,843,433		224,705					2,068,138
5	Land-O-Sun Spartanburg			363,331							363,331
1	Marva Maid Landover			475,218							475,218
VA	Marva Maid Newport News	999,793		5,998,759	2,999,379						9,997,931
5	Mayfield			1,965,323							1,965,323
5	Milkco			2,064,633							2,064,633
33	Nestle	332,338									332,338
5	PET Richmond	8,243,530		3,803,667	7,600,295						19,647,492
VA	Potomac Farms			299,546							299,546
7	Saputo Dairy KY	468,032									468,032
1	Saputo Foods NY	414,318									414,318
33	Superior Dairy	2,170,951									2,170,951
1	Swiss Premium Dairy			2,792,812							2,792,812
1	Tuscan Lehigh Dairies		468,034			369,533		238,992			1,076,559
33	United Dairy	5,177,474									5,177,474
1	Upstate Niagara			341,703							341,703
1	Wawa Dairy			467,617							467,617
5	Westover Dairy	7,351,999									7,351,999
VA	White Wave Mt. Crawford			1,080,954							1,080,954
5	Winchester Farms	42,648							12,374		55,021
<b>TOTAL</b>		<b>28,385,815</b>	<b>468,034</b>	<b>24,319,872</b>	<b>14,175,782</b>	<b>811,695</b>	<b>253,356</b>	<b>238,992</b>	<b>12,374</b>		<b>68,665,919</b>

<b>3-month Base Minus Total</b>	<b>(0)</b>	<b>(0)</b>	<b>(0)</b>	<b>(0)</b>	<b>(0)</b>	<b>(0)</b>	<b>(0)</b>	<b>(0)</b>	<b>(0)</b>	<b>(0)</b>	<b>(0)</b>
---------------------------------	------------	------------	------------	------------	------------	------------	------------	------------	------------	------------	------------

**Virginia State Milk Commission  
Base Assignment System  
August 2016**

Virginia Base				
Base Assignable to Virginia Plants:	11,378,431	Percentage of Base Assignable to Virginia Plants:		17.075103%
	<b>DFA</b>	<b>MDVA</b>	<b>CMPA</b>	<b>TOTAL</b>
Assignable Base:	28,555,833	24,058,368	14,023,354	66,637,556
Virginia Plant Base Assignment:	4,875,938	4,107,991	2,394,502	11,378,431
<b>Virginia Plants</b>	<b>DFA</b>	<b>MDVA</b>	<b>CMPA</b>	
Marva Maid Newport News:	4,875,938	2,727,491	2,394,502	9,997,931
Potomac Farms		299,546		299,546
White Wave Mt. Crawford		1,080,954		1,080,954
<b>Total</b>	4,875,938	4,107,991	2,394,502	11,378,431

	<b>DFA</b>	<b>MDVA</b>	<b>CMPA</b>	<b>Land O'Lakes</b>	<b>Cumberland Valley</b>	<b>Mt. Joy</b>	
Base Assigned to Virginia Plants:	999,793	7,379,259	2,999,379				
Percent of Total Base Assigned to Virginia Plants (%):	<b>3.46%</b>	<b>30.34%</b>	<b>21.16%</b>				
Base Assigned to Fully Regulated Federal Order Plants:	27,866,430	16,940,614	11,176,403	811,695	253,356	238,992	
Percent of Total Base Assigned to Federal Order Plants (%):	<b>96.54%</b>	<b>69.66%</b>	<b>78.84%</b>	<b>100.00%</b>	<b>100.00%</b>	<b>100.00%</b>	
Total Base Assigned:	28,866,223	24,319,872	14,175,782	811,695	253,356	238,992	
Assigned Base (From Base worksheet):	28,866,223	24,319,872	14,175,782	811,695	253,356	238,992	
Variance (Total Base Assigned - Assigned Base):	0						
Base Assigned to Federal Order 1 (%):	5.13%	32.95%		100.00%	100.00%	100.00%	
Base Assigned to Federal Order 5 (%):	62.58%	36.71%	78.84%				
Base Assigned to Federal Order 7 (%):	1.62%						
Base Assigned to Federal Order 33 (%):	27.21%						
Total Base Assigned to Federal Order Plants (%):	<b>96.54%</b>	<b>69.66%</b>	<b>78.84%</b>	<b>100.00%</b>	<b>100.00%</b>	<b>100.00%</b>	

**Virginia State Milk Commission  
Producer Base Transfers  
For Commission Approval: September 21, 2016**

The Administrator read and considered the following producer base transfer requests and made the required corrections to monthly processor base assignments:

Date Received	Effective Date	Cooperative	Consigned	Action	Transfer Number	Producer Name	License Number	Previous Base		Adjusted Base	
								9-Month	3-Month	9-Month	3-Month
August 2, 2016	August 1, 2016	DFA	No	Cooperative Change	08C	Pryor Andrew W T/A Hills-Dale Farm	003755	10,570	9,936	10,570	9,936
August 2, 2016	August 1, 2016	CMPA	No	Cooperative Change	08C	Pryor Andrew W T/A Hills-Dale Farm	003755	10,570	9,936	10,570	9,936
July 29, 2016	August 1, 2016	DFA	Yes	Partial Transfer	0807	New Generation Dairy	005214	1,641,290	1,542,812	1,618,103	1,521,017
July 29, 2016	August 1, 2016	DFA	No	Increase	0807	Bogges Dairy Inc.	005274	19,500	18,330	42,687	40,125
July 30, 2016	August 1, 2016	MDVA	No	Total Transfer	0808	Magness Daniel T and Benjamin L	004313	18,984	17,845	0	0
July 30, 2016	August 1, 2016	MDVA	No	Issue	0808	Benjamin L and S Ruth Magness	005277	0	0	18,984	17,845
August 12, 2016	August 16, 2016	CMPA	Yes	Partial Transfer	0809	Nifong Wayne E, T/A Clear View Dairy	005250	17,450	16,403	100	94
August 12, 2016	August 16, 2016	CMPA	Yes	Increase	0809	Evergreen Ridge Dairy LLC	004717	533,627	501,610	550,977	517,919
August 12, 2016	August 16, 2016	CMPA	No	Partial Transfer	0810	Brubaker E Cline	000188	65,215	61,303	50,215	47,203
August 12, 2016	August 16, 2016	CMPA	Yes	Increase	0810	Evergreen Ridge Dairy LLC	004717	550,977	517,919	565,977	532,019
August 12, 2016	August 16, 2016	CMPA	No	Partial Transfer	0811	Bailey J E SR & Son	000056	46,564	43,770	20,000	18,800
August 12, 2016	August 16, 2016	CMPA	Yes	Increase	0811	Sowers Curtis R &/or Mark A. T/A Huckleberry Da	003347	463,546	435,733	490,110	460,703
August 14, 2016	August 16, 2016	CMPA	No	Partial Transfer	0812	Blankenship Bobby L	000113	39,310	36,951	27,310	25,671
August 14, 2016	August 16, 2016	CMPA	No	Increase	0812	Pryor Andrew W T/A Hills-Dale Farm	003755	10,570	9,936	22,570	21,216
August 14, 2016	August 16, 2016	CMPA	Yes	Partial Transfer	0813	Adkins Thomas &/or Andrea T/A A+ Cattle	005114	134,400	126,336	127,500	119,850
August 14, 2016	August 16, 2016	CMPA	No	Increase	0813	Austin Kermit L &.or Kimberly S, T/A Franklin Clearview Dairy	001616	155,211	145,898	160,211	150,598
August 14, 2016	August 16, 2016	CMPA	Yes	Increase	0813	Hamlet Preston T & Dorothy E., T/A Turkey Creek Fm	000563	6,547	6,154	8,447	7,940



Virginia State Milk Commission  
Base Assignment System  
August 2016  
CORRECTION Transfer D

	DFA SE	DFA NE	MDVA	CMPA	Land O'Lakes	Cumberland Valley	Mt. Joy	DFA ME		Established Base Total
Established 3-month Base	28,080,591	463,002	24,058,368	14,023,354	802,967	250,631	236,422	12,241		67,927,576
Corrected 3-month Base	28,028,088	463,002	24,058,368	14,075,857	802,967	250,631	236,422	12,241		67,927,576

Order	Distributor	DFA SE	DFA NE	MDVA	CMPA	Land O'Lakes	Cumberland Valley	Mt. Joy	DFA ME		Total Base Assignment
5	Borden Dairy KY			348,741							348,741
33	Broughton Foods	172,311									172,311
1	Cloverland Farms Dairy			2,092,986			253,356				2,346,342
1	Crowley Foods	597,688									597,688
1	Cumberland Dairy					217,457					217,457
5	Dairy Fresh	2,414,732		381,149	2,304,945						5,100,826
5	Harris Teeter				900,095						900,095
5	Homestead Creamery				371,068						371,068
1	HP Hood			1,843,433		224,705					2,068,138
5	Land-O-Sun Spartanburg			363,331							363,331
1	Marva Maid Landover			475,218							475,218
VA	Marva Maid Newport News	999,793		5,998,759	2,999,379						9,997,931
5	Mayfield			1,965,323							1,965,323
5	Milkco			2,064,633							2,064,633
33	Nestle	332,338									332,338
5	PET Richmond	8,190,457		3,803,667	7,653,368						19,647,492
VA	Potomac Farms			299,546							299,546
7	Saputo Dairy KY	468,032									468,032
1	Saputo Foods NY	414,318									414,318
33	Superior Dairy	2,170,951									2,170,951
1	Swiss Premium Dairy			2,792,812							2,792,812
1	Tuscan Lehigh Dairies		468,034			369,533		238,992			1,076,559
33	United Dairy	5,177,474									5,177,474
1	Upstate Niagara			341,703							341,703
1	Wawa Dairy			467,617							467,617
5	Westover Dairy	7,351,999									7,351,999
VA	White Wave Mt. Crawford			1,080,954							1,080,954
5	Winchester Farms	42,648							12,374		55,021
<b>TOTAL</b>		<b>28,332,741</b>	<b>468,034</b>	<b>24,319,872</b>	<b>14,228,855</b>	<b>811,695</b>	<b>253,356</b>	<b>238,992</b>	<b>12,374</b>		<b>68,665,919</b>

<b>3-month Base Minus Total</b>	<b>(0)</b>	<b>(0)</b>	<b>(0)</b>	<b>(0)</b>	<b>(0)</b>	<b>(0)</b>	<b>(0)</b>	<b>(0)</b>	<b>(0)</b>	<b>(0)</b>	<b>(0)</b>
---------------------------------	------------	------------	------------	------------	------------	------------	------------	------------	------------	------------	------------

**Virginia State Milk Commission  
Base Assignment System  
August 2016**

Virginia Base				
Base Assignable to Virginia Plants:	11,378,431	Percentage of Base Assignable to Virginia Plants:		17.075103%
	<b>DFA</b>	<b>MDVA</b>	<b>CMPA</b>	<b>TOTAL</b>
Assignable Base:	28,503,330	24,058,368	14,075,857	66,637,556
Virginia Plant Base Assignment:	4,866,973	4,107,991	2,403,467	11,378,431
<b>Virginia Plants</b>	<b>DFA</b>	<b>MDVA</b>	<b>CMPA</b>	
Marva Maid Newport News:	4,866,973	2,727,491	2,403,467	9,997,931
Potomac Farms		299,546		299,546
White Wave Mt. Crawford		1,080,954		1,080,954
<b>Total</b>	4,866,973	4,107,991	2,403,467	11,378,431

	<b>DFA</b>	<b>MDVA</b>	<b>CMPA</b>	<b>Land O'Lakes</b>	<b>Cumberland Valley</b>	<b>Mt. Joy</b>	
Base Assigned to Virginia Plants:	999,793	7,379,259	2,999,379				
Percent of Total Base Assigned to Virginia Plants (%):	<b>3.47%</b>	<b>30.34%</b>	<b>21.08%</b>				
Base Assigned to Fully Regulated Federal Order Plants:	27,813,356	16,940,614	11,229,476	811,695	253,356	238,992	
Percent of Total Base Assigned to Federal Order Plants (%):	<b>96.53%</b>	<b>69.66%</b>	<b>78.92%</b>	<b>100.00%</b>	<b>100.00%</b>	<b>100.00%</b>	
Total Base Assigned:	28,813,149	24,319,872	14,228,855	811,695	253,356	238,992	
Assigned Base (From Base worksheet):	28,813,149	24,319,872	14,228,855	811,695	253,356	238,992	
Variance (Total Base Assigned - Assigned Base):	0						
Base Assigned to Federal Order 1 (%):	5.14%	32.95%		100.00%	100.00%	100.00%	
Base Assigned to Federal Order 5 (%):	62.51%	36.71%	78.92%				
Base Assigned to Federal Order 7 (%):	1.62%						
Base Assigned to Federal Order 33 (%):	27.26%						
Total Base Assigned to Federal Order Plants (%):	<b>96.53%</b>	<b>69.66%</b>	<b>78.92%</b>	<b>100.00%</b>	<b>100.00%</b>	<b>100.00%</b>	

**Virginia State Milk Commission  
 Producer Base Transfers  
 For Commission Approval: September 21, 2016**

The Administrator read and considered the following producer base transfer requests and made the required corrections to monthly processor base assignments:

This assignment was recorded twice: once as a transfer effective July 16, 2016, and once effective August 1, 2016. August Transfer D is a correction to the duplicated entry.

Date Received	Effective Date	Cooperative	Consigned	Action	Transfer Number	Producer Name	License Number	Previous Base		Adjusted Base	
								9-Month	3-Month	9-Month	3-Month
July 15, 2016	August 1, 2016	CMPA	No	Cooperative Change	08D	Rhodes Raymond R	004537	55,854	52,503	55,854	52,503
July 15, 2016	August 1, 2016	DFA	No	Cooperative Change	08D	Rhodes Raymond R	004537	55,854	52,503	55,854	52,503

Virginia State Milk Commission  
Base Assignment System  
September 2016  
CORRECTION Transfer A

	DFA SE	DFA NE	MDVA	CMPA	Land O'Lakes	Cumberland Valley	Mt. Joy	DFA ME		Established Base Total
Established 9-month Base	29,817,115	492,555	25,594,009	14,974,316	854,220	266,629	251,513	13,022		72,263,379
Corrected 9-month Base	29,954,661	492,555	25,594,009	14,836,770	854,220	266,629	251,513	13,022		72,263,379

Order	Distributor	DFA SE	DFA NE	MDVA	CMPA	Land O'Lakes	Cumberland Valley	Mt. Joy	DFA ME		Total Base Assignment
5	Borden Dairy KY			554,199							554,199
33	Broughton Foods	188,975									188,975
1	Cloverland Farms Dairy			2,289,484			262,737				2,552,221
1	Crowley Foods	611,848									611,848
1	Cumberland Dairy					196,619					196,619
5	Dairy Fresh	2,974,645		469,527	2,839,401						6,283,573
5	Harris Teeter				973,349						973,349
5	Homestead Creamery				353,412						353,412
1	HP Hood			1,590,048		178,456					1,768,504
5	Land-O-Sun Spartanburg			328,866							328,866
1	Marva Maid Landover			465,626							465,626
VA	Marva Maid Newport News	1,041,287		6,247,723	3,123,862						10,412,872
5	Mayfield			1,001,578							1,001,578
5	Milkco			1,999,265							1,999,265
33	Nestle	408,210									408,210
5	PET Richmond	7,417,668		5,406,831	7,330,151						20,154,651
VA	Potomac Farms			358,542							358,542
7	Saputo Dairy KY	395,322									395,322
1	Saputo Foods NY	405,903									405,903
33	Superior Dairy	2,886,777									2,886,777
1	Swiss Premium Dairy			2,698,353							2,698,353
1	Tuscan Lehigh Dairies		485,364			466,674		247,841			1,199,880
33	United Dairy	5,899,978									5,899,978
1	Upstate Niagara			295,349							295,349
1	Wawa Dairy			429,261							429,261
5	Westover Dairy	7,247,570									7,247,570
VA	White Wave Mt. Crawford			1,085,721							1,085,721
5	Winchester Farms	39,185							12,832		52,016
<b>TOTAL</b>		<b>29,517,367</b>	<b>485,364</b>	<b>25,220,374</b>	<b>14,620,175</b>	<b>841,750</b>	<b>262,737</b>	<b>247,841</b>	<b>12,832</b>		<b>71,208,439</b>

<b>9-month Base Minus Total</b>					<b>(0)</b>	<b>0</b>					
---------------------------------	--	--	--	--	------------	----------	--	--	--	--	--

**Virginia State Milk Commission  
Base Assignment System  
September 2016**

<b>Virginia Base</b>				
Base Assignable to Virginia Plants:	11,857,134	Percentage of Base Assignable to Virginia Plants:		16.725863%
	<b>DFA</b>	<b>MDVA</b>	<b>CMPA</b>	<b>TOTAL</b>
Assignable Base:	30,460,238	25,594,009	14,836,770	70,891,017
Virginia Plant Base Assignment:	5,094,738	4,280,819	2,481,578	11,857,134
<b>Virginia Plants</b>	<b>DFA</b>	<b>MDVA</b>	<b>CMPA</b>	
Marva Maid Newport News:	5,094,738	2,836,557	2,481,578	10,412,872
Potomac Farms		358,542		358,542
White Wave Mt. Crawford		1,085,721		1,085,721
<b>Total</b>	<b>5,094,738</b>	<b>4,280,819</b>	<b>2,481,578</b>	<b>11,857,134</b>

	<b>DFA</b>	<b>MDVA</b>	<b>CMPA</b>	<b>Land O'Lakes</b>	<b>Cumberland Valley</b>	<b>Mt. Joy</b>	
Base Assigned to Virginia Plants:	1,041,287	7,691,985	3,123,862				
Percent of Total Base Assigned to Virginia Plants (%):	<b>3.47%</b>	<b>30.50%</b>	<b>21.37%</b>				
Base Assigned to Fully Regulated Federal Order Plants:	28,974,276	17,528,388	11,496,313	841,750	262,737	247,841	
Percent of Total Base Assigned to Federal Order Plants (%):	<b>96.53%</b>	<b>69.50%</b>	<b>78.63%</b>	<b>100.00%</b>	<b>100.00%</b>	<b>100.00%</b>	
Total Base Assigned:	30,015,563	25,220,374	14,620,175	841,750	262,737	247,841	
Assigned Base (From Base worksheet):	30,015,563	25,220,374	14,620,175	841,750	262,737	247,841	
Variance (Total Base Assigned - Assigned Base):							
Base Assigned to Federal Order 1 (%):	5.01%	30.80%		100.00%	100.00%	100.00%	
Base Assigned to Federal Order 5 (%):	58.94%	38.70%	78.63%				
Base Assigned to Federal Order 7 (%):	1.32%						
Base Assigned to Federal Order 33 (%):	31.26%						
Total Base Assigned to Federal Order Plants (%):	<b>96.53%</b>	<b>69.50%</b>	<b>78.63%</b>	<b>100.00%</b>	<b>100.00%</b>	<b>100.00%</b>	

**Virginia State Milk Commission  
 Producer Base Transfers  
 For Commission Approval: September 21, 2016**

The Administrator read and considered the following producer base transfer requests and made the required corrections to monthly processor base assignments:

Date Received	Effective Date	Cooperative	Consigned	Action	Transfer Number	Producer Name	License Number	Previous Base		Adjusted Base	
								9-Month	3-Month	9-Month	3-Month
August 23, 2016	September 1, 2016	CMPA	Yes	Amend	--	Showalter Glen & Chris	004350	137,546	129,293	137,546	129,293
August 23, 2016	September 1, 2016	CMPA	No	Amend	--	Showalter Glen & Chris	004350	137,546	129,293	137,546	129,293
August 23, 2016	September 1, 2016	CMPA	Yes	Cooperative Change	09A	Showalter Glen & Chris	004350	137,546	129,293	137,546	129,293
August 23, 2016	September 1, 2016	DFA	No	Cooperative Change	09A	Showalter Glen & Chris	004350	137,546	129,293	137,546	129,293
August 23, 2016	September 1, 2016	CMPA	No	Amend	--	Sisson Steven A	001883	103,825	97,596	103,825	97,596
August 23, 2016	September 1, 2016	CMPA	Yes	Amend	--	Sisson Steven A	001883	103,825	97,596	103,825	97,596
August 24, 2016	September 1, 2016	DFA	Yes	Total Transfer	0902	Anderson Charles	002241	7,013	6,592	0	0
August 24, 2016	September 1, 2016	DFA	Yes	Increase	0902	Williams Dairy Inc Robert & Ricky Williams	005184	401,043	376,980	408,056	383,572
August 29, 2016	September 1, 2016	MDVA	Yes	Cancel	--	Miller Norman E/Linda K-Hickory Hol	004301	8,665	8,145	0	0
August 29, 2016	September 1, 2016	MDVA	Yes	Increase	--	Llewellyn Donald/Steven	003599	10,803	10,155	19,468	18,300
August 30, 2016	September 1, 2016	CMPA	Yes	Total Transfer	0903	Hill Robin & Anna, T/A Echo Hill Dairy	005055	57,455	54,008	0	0
August 30, 2016	September 1, 2016	CMPA	No	Increase	0903	Austin Kermit L &/or Kimberly S, T/A Franklin Clearview Dairy	001616	160,211	150,598	165,211	155,298
August 30, 2016	September 1, 2016	CMPA	No	Increase	0903	Wickham Milton G Jr	001443	76,279	71,702	88,734	83,410
August 30, 2016	September 1, 2016	CMPA	Yes	Increase	0903	Harris Ramond E	004857	28,476	26,767	38,476	36,167
August 30, 2016	September 1, 2016	CMPA	Yes	Increase	0903	Layne Norman P, T/A Four Oaks Dairy Farm	005234	55,759	52,413	60,759	57,113
August 30, 2016	September 1, 2016	CMPA	Yes	Increase	0903	Sowers Curtis R &/or Mark A. T/A Huckleberry Da	003347	490,110	460,703	510,110	479,503
August 30, 2016	September 1, 2016	CMPA	Yes	Increase	0903	Sunset View Dairy LLC	004594	181,728	170,824	186,728	175,524
September 8, 2016	September 16, 2016	MDVA	No	Total Transfer	0904	S & L Mellott Farms	004772	102,271	96,134	0	0
September 8, 2016	September 16, 2016	MDVA	No	Issue	0904	Samuel E or Esther K Stoltzfus	005278	0	0	102,271	96,134

The next Commission meeting date was scheduled for December 14, 2016 at 1:30 p.m., at the Virginia Department of Forestry in Charlottesville, VA 22903.

  
Chairperson

  
Administrator