

FINAL MINUTES

Milk Commission Meeting Held December 17, 2015

Minutes of the meeting of the Milk Commission, held at the Virginia Farm Bureau, 12580 W. Creek Parkway, Auditorium; Richmond, VA 23238.

THE COMMISSION:

PRESENT: Kenneth Smith, Chairperson; Crafton Wilkes, Administrator; Gerald Heatwole, Commissioner; Bruce E. Mayer; Commissioner, Jessica Roberts, Auditor II.

ABSENT: John Swanson, Commissioner; Kate Blair Farmer, Commissioner; Patrick Crawford, Commissioner; Robb Watters, Commissioner.

Kenneth Smith called the meeting to order at 10:45 a.m. Kenneth Smith asked for a motion to accept the minutes from the previous meeting. Gerald Heatwole so moved and Bruce Mayer seconded the motion. The minutes were accepted as written.

The Administrator:

The Administrator gave a review of Class I and Class II sales and pricing, as well as retail pricing. There were no questions regarding pricing. The Administrator went on to review Presumed Delivery Cost Percentage, which the Commission is required to consider each December per 2VAC 15-20-100 3 G (2). There was a hearty discussion on the delivered cost, delivery percentage and the variance, including the differences and clarification on the numbers. Kenneth Smith asked if there was any comment from the Commissioner's present. There was some additional discussion on Class IV pricing and some of the upcoming expectations that are trending in the market.

Kenneth Smith asked for a motion to accept the Presumed Delivery Cost Percentage as outlined in the Delivery Cost per Case Analysis documents that were presented at the meeting. Gerald Heatwole so moved and Bruce Mayer seconded the motion. The Presumed Delivery Cost Percentage was accepted as presented.

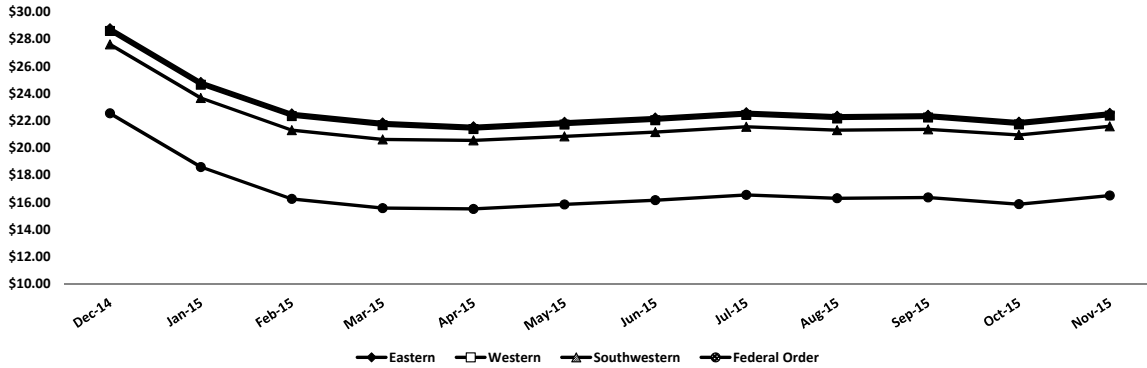
<u>Cases per Delivery</u>		<u>2015</u>	<u>Effective 2016</u>
0-13	Platform Cost x	1.5393 (53.93%)	1.4436 (44.36%)
14-99	Platform Cost x	1.2696 (26.96%)	1.2218 (22.18%)
100+	Platform Cost x	1.1458 (14.58%)	1.1199 (11.99%)

Kenneth Smith asked if there was any comment from the public present. There was no public comment. The next Commission meeting is February 17, 2016 at the Virginia Department of Forestry, 900 Natural Resources Drive, Charlottesville, Virginia 22903.

Virginia State Milk Commission
 Class I Price Dashboard
 December 2015

Months Plotted: 12

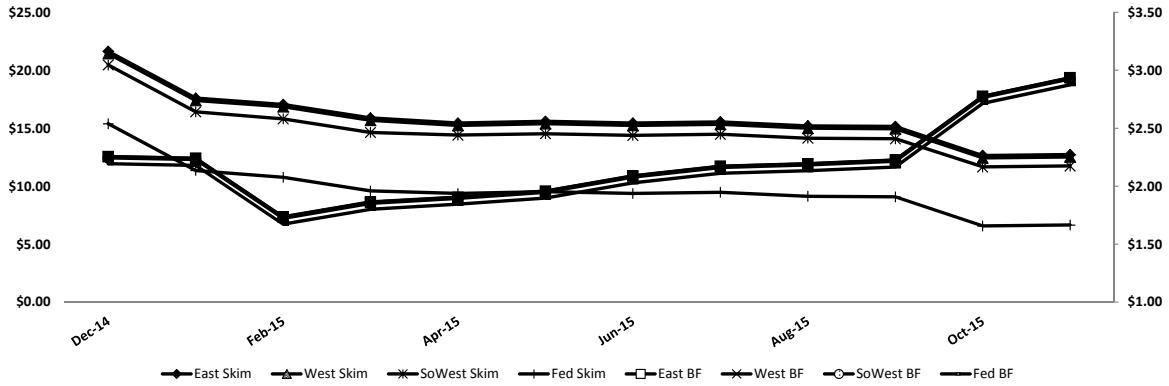
Class I Price by Market



	Class I Price (per cwt)			
	Eastern	Western	Southwestern	Federal Order*
12-Month High	\$28.78	\$28.58	\$27.60	\$22.53
12-Month Low	\$21.57	\$21.37	\$20.53	\$15.50
12-Month Avg.	\$22.96	\$22.76	\$21.86	\$16.82
Current Month	\$22.80	\$22.60	\$21.83	\$16.71

*The Federal Order Class I Price is a baseline price, and does not factor in location differentials

Class I Component Price by Market

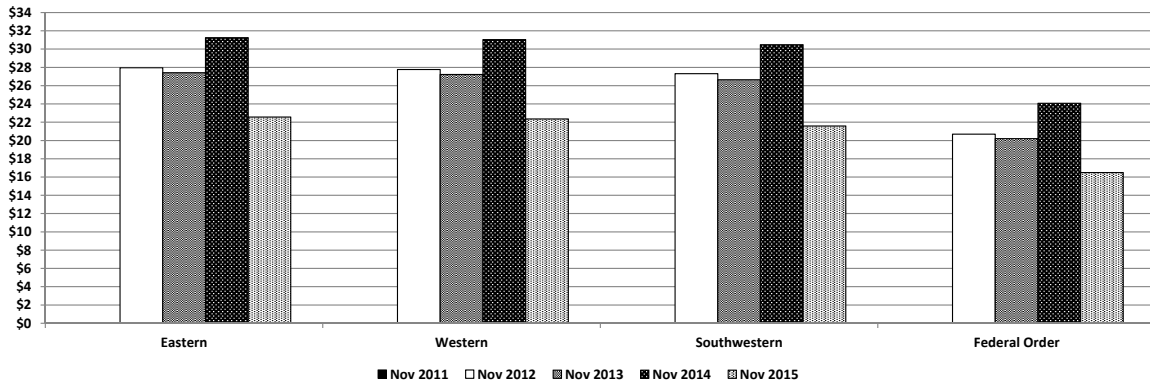


	Class I Component Price							
	Eastern Skim (per cwt)	Eastern Butterfat (per lb)	Western Skim (per cwt)	Western Butterfat (per lb)	Southwestern Skim (per cwt)	Southwestern Butterfat (per lb)	Federal Order Skim (per cwt)	Federal Order Butterfat (per lb)
12-Month High	\$21.6400	\$2.9363	\$21.4400	\$2.9343	\$20.4600	\$2.9265	\$15.3900	\$2.8756
12-Month Low	\$12.6445	\$1.7349	\$12.4445	\$1.7329	\$11.6620	\$1.7224	\$6.5700	\$1.6719
12-Month Avg.	\$15.8280	\$2.1960	\$15.6280	\$2.1940	\$14.7295	\$2.1850	\$9.6875	\$2.1346
Current Month	\$12.1495	\$3.1658	\$11.9495	\$3.1638	\$11.1750	\$3.1561	\$6.0500	\$3.1048

Virginia State Milk Commission
 Class I Price Dashboard
 December 2015

Type: **Annual**

Class I Price Comparison



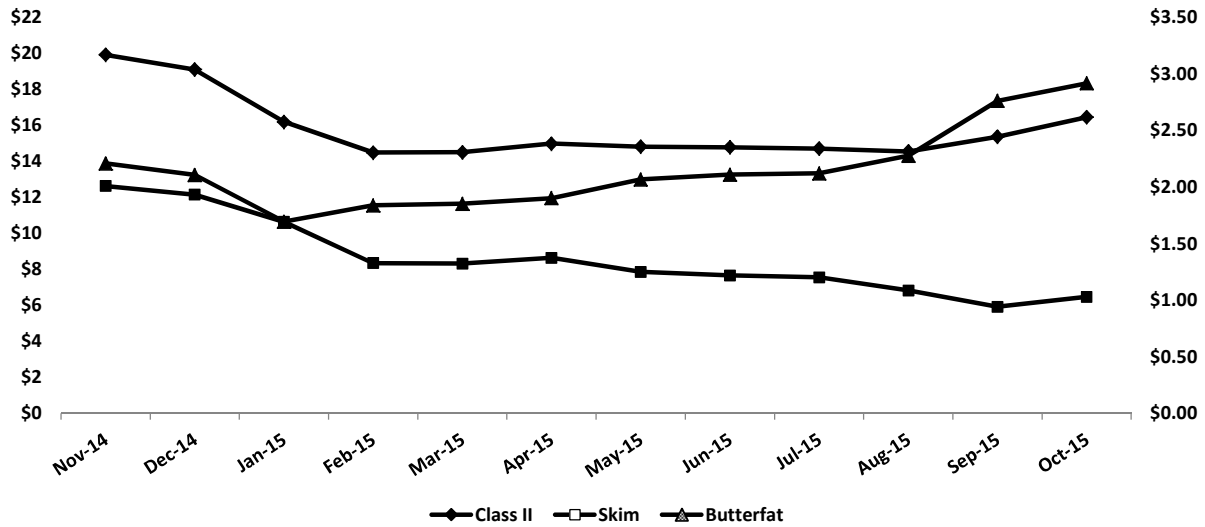
Class I Price Comparison by Month

	Nov 2011	Nov 2012	Nov 2013	Nov 2014	Nov 2015
Eastern	#N/A	\$27.96	\$27.42	\$31.24	\$22.56
Western	#N/A	\$27.76	\$27.22	\$31.04	\$22.36
Southwestern	#N/A	\$27.31	\$26.65	\$30.47	\$21.57
Federal Order	#N/A	\$20.70	\$20.20	\$24.06	\$16.48

Virginia State Milk Commission
 Class II Dashboard
 November 2015

Months Plotted: 12

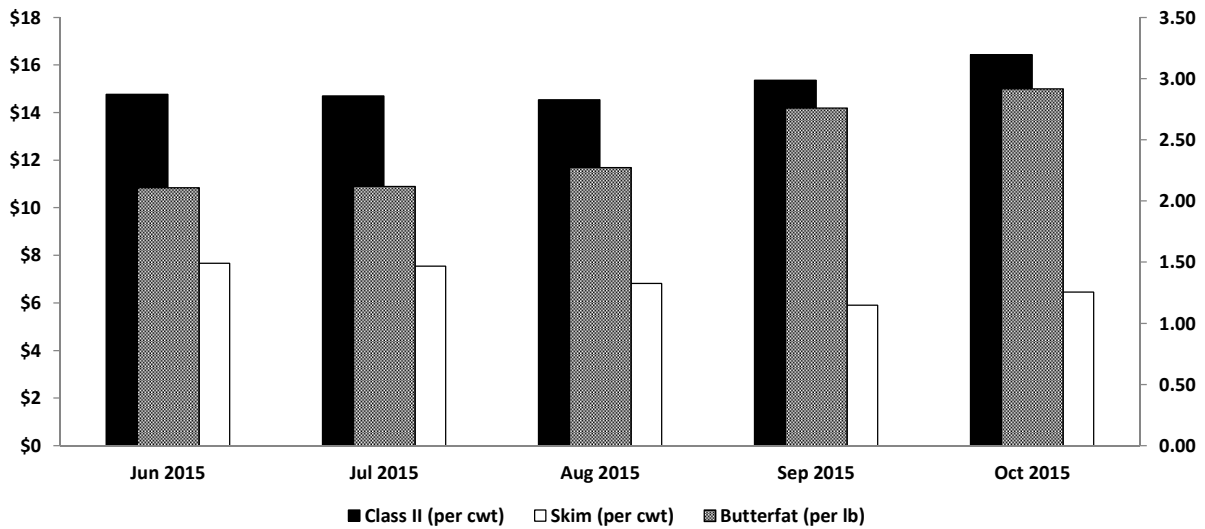
Class II and Component Price



Class II and Component Prices			
	Class II (per cwt)	Skim (per cwt)	Butterfat (per lb)
12-Month High	\$19.09	\$12.1400	\$2.9157
12-Month Low	\$14.48	\$5.9100	\$1.6925
12-Month Avg.	\$15.44	\$8.2091	\$2.1484
Current Month	\$18.26	\$7.3500	\$3.1900

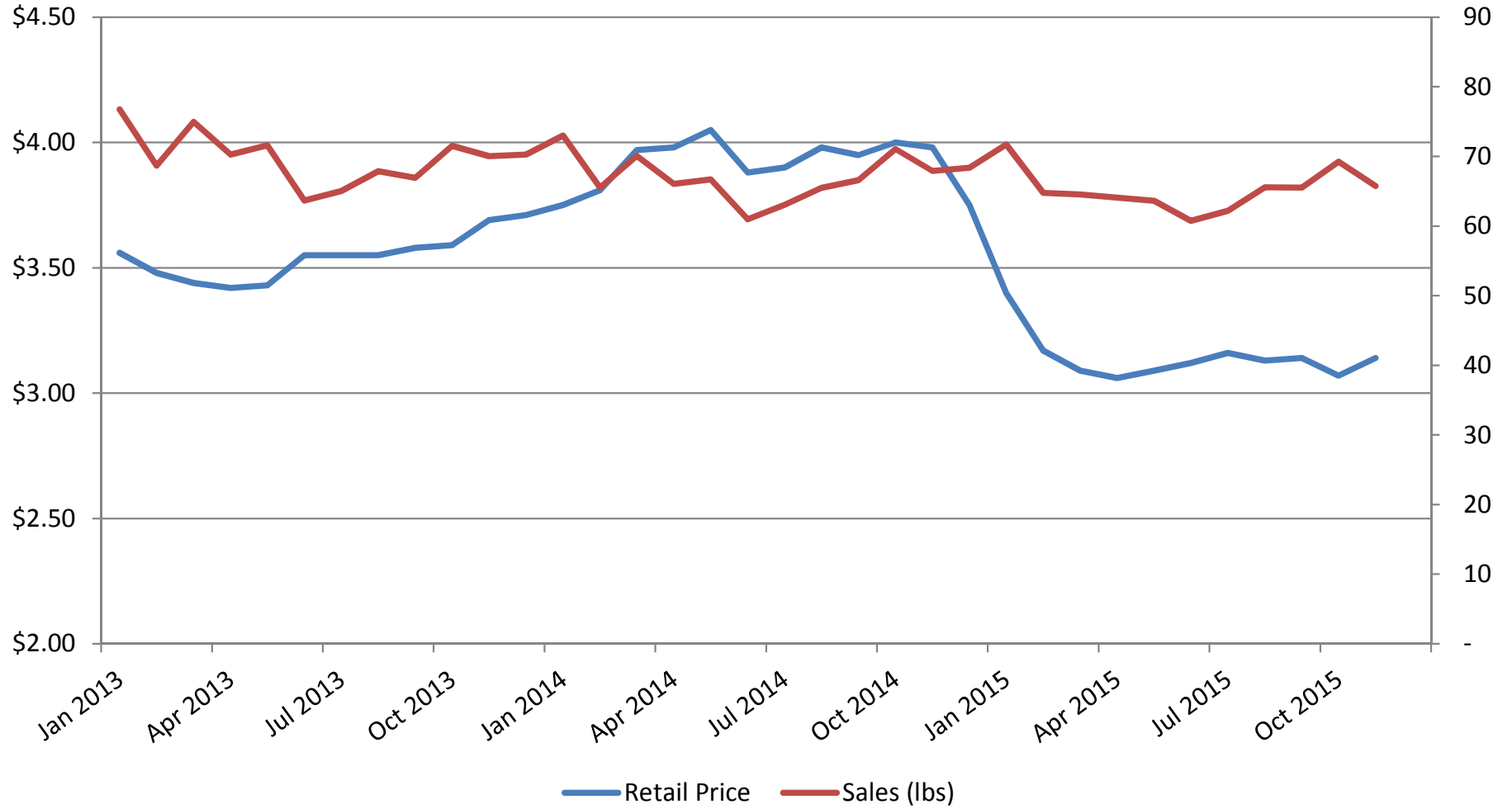
Comparison: Monthly

Class II Price Comparison



Class II and Component Prices					
	Jun 2015	Jul 2015	Aug 2015	Sep 2015	Oct 2015
Class II (per cwt)	\$14.77	\$14.70	\$14.54	\$15.36	\$16.44
Skim (per cwt)	\$7.6600	\$7.5500	\$6.8200	\$5.9100	\$6.4600
Butterfat (per lb)	\$2.1081	\$2.1195	\$2.2744	\$2.7601	\$2.9157

Retail Price vs. Sales (M lbs)



Virginia State Milk Commission
 Delivery Cost per Case Analysis
 2015 - Effective: Jan 1, 2016

Summary	Year	Total Cases	Private Label	Net Cases	Distribution Expense	Dist. Exp. per Case	Variance (\$)	Variance (%)
	2014	4,353,324	311,429	4,041,895	\$4,232,075	\$1.047052	-\$0.185735	-17.7388%
	2015	4,608,116	285,213	4,322,903	\$3,723,392	\$0.861317		
	Cases per Delivery	2015 Delivery Percentage		2016 Delivery Percentage		Variance (\$)	Variance (%)	
	0-13	53.93%		44.36%		-0.0957	-17.74%	
14-99	26.96%		22.18%		-0.0478	-17.74%		
100+	14.58%		11.99%		-0.0259	-17.74%		

Eastern Market	Cases per Delivery	Product	Nov 15 Platform Cost	2015 Delivered Cost/Unit	2016 Delivered Cost/Unit	Variance (\$)
	0-13	HVD Gallon	\$2.586	\$3.981	\$3.733	-\$0.247
		2% Gallon	\$2.266	\$3.488	\$3.271	-\$0.217
		1% Gallon	\$2.039	\$3.139	\$2.944	-\$0.195
		Skim Gallon	\$1.942	\$2.989	\$2.804	-\$0.186
	14-99	HVD Gallon	\$2.586	\$3.283	\$3.160	-\$0.124
		2% Gallon	\$2.266	\$2.877	\$2.769	-\$0.108
		1% Gallon	\$2.039	\$2.589	\$2.491	-\$0.098
		Skim Gallon	\$1.942	\$2.466	\$2.373	-\$0.093
	100+	HVD Gallon	\$2.586	\$2.963	\$2.896	-\$0.067
		2% Gallon	\$2.266	\$2.596	\$2.538	-\$0.059
		1% Gallon	\$2.039	\$2.336	\$2.284	-\$0.053
		Skim Gallon	\$1.942	\$2.225	\$2.175	-\$0.050

Western Market	Cases per Delivery	Product	Nov 15 Platform Cost	2015 Delivered Cost/Unit	2016 Delivered Cost/Unit	Variance (\$)
	0-13	HVD Gallon	\$2.568	\$3.953	\$3.707	-\$0.246
		2% Gallon	\$2.248	\$3.460	\$3.245	-\$0.215
		1% Gallon	\$2.022	\$3.112	\$2.919	-\$0.193
		Skim Gallon	\$1.925	\$2.963	\$2.779	-\$0.184
	14-99	HVD Gallon	\$2.568	\$3.260	\$3.138	-\$0.123
		2% Gallon	\$2.248	\$2.854	\$2.747	-\$0.108
		1% Gallon	\$2.022	\$2.567	\$2.471	-\$0.097
		Skim Gallon	\$1.925	\$2.444	\$2.352	-\$0.092
	100+	HVD Gallon	\$2.568	\$2.942	\$2.876	-\$0.066
		2% Gallon	\$2.248	\$2.576	\$2.518	-\$0.058
		1% Gallon	\$2.022	\$2.317	\$2.264	-\$0.052
		Skim Gallon	\$1.925	\$2.206	\$2.156	-\$0.050

Southwestern Market	Cases per Delivery	Product	Nov 15 Platform Cost	2015 Delivered Cost/Unit	2016 Delivered Cost/Unit	Variance (\$)
	0-13	HVD Gallon	\$2.501	\$3.850	\$3.611	-\$0.239
		2% Gallon	\$2.181	\$3.357	\$3.149	-\$0.209
		1% Gallon	\$1.954	\$3.008	\$2.821	-\$0.187
		Skim Gallon	\$1.857	\$2.858	\$2.681	-\$0.178
	14-99	HVD Gallon	\$2.501	\$3.175	\$3.056	-\$0.120
		2% Gallon	\$2.181	\$2.769	\$2.665	-\$0.104
		1% Gallon	\$1.954	\$2.481	\$2.387	-\$0.093
		Skim Gallon	\$1.857	\$2.358	\$2.269	-\$0.089
	100+	HVD Gallon	\$2.501	\$2.866	\$2.801	-\$0.065
		2% Gallon	\$2.181	\$2.499	\$2.443	-\$0.056
		1% Gallon	\$1.954	\$2.239	\$2.188	-\$0.051
		Skim Gallon	\$1.857	\$2.128	\$2.080	-\$0.048

**Virginia State Milk Commission
 Producer Base Transfers
 For Commission Approval: December 17, 2015**

The Administrator read and considered the following producer base transfer requests and made the required corrections to monthly processor base assignments:

Date Received	Effective Date	Cooperative	Consigned	Action	Transfer Number	Producer Name	License No.	Previous Base		Adjusted Base	
								9-Month	3-Month	9-Month	3-Month
September 4, 2015	September 16, 2015	MDVA	No	Total Transfer	0903	Stoltzfus Abner L & Rebecca S	005179	20,000	18,400	0	0
September 4, 2015	September 16, 2015	MDVA	No	Issue	0903	Blank Jacob K or Sarah A	005258	0	0	20,000	18,400

Virginia State Milk Commission
 Base Assignment System
 September 2015

Established 9-month Base	DFA SE	DFA NE	MDVA	CMPA	Land O'Lakes	Cumberland Valley	Mt. Joy	Independent	Established Base Total
	30,770,482	226,771	25,652,354	15,498,836	811,434	271,312	128,623	208,372	73,568,184

Order	Distributor	DFA SE	DFA NE	MDVA	CMPA	Land O'Lakes	Cumberland Valley	Mt. Joy	Independent	Total Base Assignment
5	Borden Dairy KY			400,062						400,062
33	Broughton Foods	149,385								149,385
1	Cloverland Greenspring			5,193,615			268,331			5,461,945
1	Crowley Foods	617,968								617,968
1	Cumberland Dairy					303,600				303,600
5	Dairy Fresh	3,548,207		560,060	3,386,886					7,495,153
5	Harris Teeter				981,927					981,927
5	Homestead Creamery				195,742				206,082	401,824
1	HP Hood			1,352,460		200,000				1,552,460
5	Land-O-Sun Spartanburg			876,951						876,951
1	Marva Maid Landover			511,293						511,293
VA	Marva Maid Newport News	2,419,339		1,722,743	1,209,686					5,351,767
5	Mayfield			2,692,451						2,692,451
5	Milkco			2,019,313						2,019,313
33	Nestle	431,780								431,780
5	PET Richmond	8,513,706		5,495,627	9,554,279					23,563,612
VA	Potomac Farms			279,426						279,426
7	Saputo Dairy KY	409,738								409,738
1	Saputo Foods NY	416,796								416,796
33	Superior Dairy	1,051,514								1,051,514
1	Swiss Premium Dairy			2,780,123						2,780,123
1	Tuscan Lehigh Dairies	365,057	224,279			298,917		127,210		1,015,462
33	United Dairy	5,083,246								5,083,246
1	Upstate Niagara			173,882						173,882
1	Wawa Dairy			452,906						452,906
5	Westover Dairy	7,316,174								7,316,174
5	White Wave Mt. Crawford			859,548						859,548
5	Winchester Farms	109,435								109,435
5	Maola									
TOTAL		30,432,345	224,279	25,370,460	15,328,519	802,517	268,331	127,210	206,082	72,759,742

9-month Base Minus Total	(0)	0								
---------------------------------	------------	----------	--	--	--	--	--	--	--	--

**Virginia State Milk Commission
 Base Assignment System
 September 2015**

Virginia Base				
Base Assignable to Virginia Plants:	5,631,194	Percentage of Base Assignable to Virginia Plants:		7.805011%
	DFA	MDVA	CMPA	TOTAL
Assignable Base:	30,997,253	25,652,354	15,498,836	72,148,443
Virginia Plant Base Assignment:	2,419,339	2,002,169	1,209,686	5,631,194
Virginia Plants	DFA	MDVA	CMPA	
Marva Maid Newport News:	2,419,339	1,722,743	1,209,686	5,351,767
PET Richmond				
Potomac Farms		279,426		279,426
White Wave Mt. Crawford				
Total	2,419,339	2,002,169	1,209,686	5,631,194

	DFA	MDVA	CMPA	Land O'Lakes	Cumberland Valley	Mt. Joy	Independent
Base Assigned to Virginia Plants:	2,419,339	2,002,169	1,209,686				
Percent of Total Base Assigned to Virginia Plants (%):	7.89%	7.89%	7.89%				
Base Assigned to Fully Regulated Federal Order Plants:	28,237,285	23,368,291	14,118,833	802,517	268,331	127,210	206,082
Percent of Total Base Assigned to Federal Order Plants (%):	92.11%	92.11%	92.11%	100.00%	100.00%	100.00%	100.00%
Total Base Assigned:	30,656,624	25,370,460	15,328,519	802,517	268,331	127,210	206,082
Assigned Base (From Base worksheet):	30,656,624	25,370,460	15,328,519	802,517	268,331	127,210	206,082
Variance (Total Base Assigned - Assigned Base):	0	0	0				
Base Assigned to Federal Order 1 (%):	5.30%	41.25%		100.00%	100.00%	100.00%	
Base Assigned to Federal Order 5 (%):	63.57%	50.86%	92.11%				100.00%
Base Assigned to Federal Order 7 (%):	1.34%						
Base Assigned to Federal Order 33 (%):	21.91%						
Total Base Assigned to Federal Order Plants (%):	92.11%	92.11%	92.11%	100.00%	100.00%	100.00%	100.00%

**Virginia State Milk Commission
 Producer Base Transfers
 For Commission Approval: December 17, 2015**

The Administrator read and considered the following producer base transfer requests and made the required corrections to monthly processor base assignments:

Date Received	Effective Date	Cooperative	Consigned	Action	Transfer Number	Producer Name	License No.	Previous Base		Adjusted Base	
								9-Month	3-Month	9-Month	3-Month
September 17, 2015	October 1, 2015	MDVA	Yes	Cancel	--	Burkholder James R & Rhoda A	003444	18,402	16,930	0	0
September 17, 2015	October 1, 2015	MDVA	Yes	Increase	--	Tucker S W & S D, T/A Mid-View Farm	003880	20,891	19,220	39,293	36,150
August 28, 2015	October 1, 2015	CMPA	No	Consign	--	Ronk Melvin L	003542	206,514	189,993	206,514	189,993
August 28, 2015	October 1, 2015	CMPA	Yes	Consign	--	Ronk Melvin L	003542	206,514	189,993	206,514	189,993
October 9, 2015	October 1, 2015	MDVA	Yes	Cancel	--	Horst Darvin Z & Arlene G	004907	10,253	9,433	0	0
October 9, 2015	October 1, 2015	MDVA	Yes	Increase	--	Hershberger Ross/Yvonne M	003838	11,236	10,337	21,489	19,770
October 9, 2015	October 1, 2015	MDVA	Yes	Cancel	--	Seiders David L	003910	43,778	40,276	0	0
October 9, 2015	October 1, 2015	MDVA	Yes	Increase	--	Wells WM J/Janet L-White Oak FM	003664	10,287	9,464	54,065	49,740
September 25, 2015	October 1, 2015	CMPA	No	Total Transfer	1002	Rainey Steve Rock Mill	002227	82,959	76,322	0	0
September 25, 2015	October 1, 2015	CMPA	Yes	Increase	1002	Cook James M T/A Jareco Farms	005256	400,000	368,000	482,959	444,322
September 30, 2015	October 1, 2015	DFA SE	No	Total Transfer	1003	Buchanan George W, T/A Buchanan Brothers Dairy	005033	24,147	22,215	0	0
September 30, 2015	October 1, 2015	DFA SE	No	Increase	1003	Lamb Lewis A & Sons Inc	000805	773,285	711,422	783,978	721,259
September 30, 2015	October 1, 2015	DFA SE	No	Increase	1003	Beery Sheldon E	004533	146,264	134,563	151,264	139,163
September 30, 2015	October 1, 2015	DFA SE	No	Increase	1003	Hidden Spring Dairy LLC	004390	46,546	42,822	50,000	46,000
September 30, 2015	October 1, 2015	DFA SE	No	Increase	1003	Flint Rock Farm	004371	28,164	25,911	33,164	30,511
October 14, 2015	October 16, 2015	CMPA	Yes	Total Transfer	1004	Bottomley Blan &/Or Tracy T/A Glade Creek Dairy	005116	295,165	271,552	0	0
October 14, 2015	October 16, 2015	CMPA	Yes	Increase	1004	Cook James M T/A Jareco Farms	005256	482,959	444,322	519,481	477,922
October 14, 2015	October 16, 2015	CMPA	Yes	Increase	1004	Evergreen Ridge Dairy LLC	004717	373,058	343,214	602,913	554,681
October 14, 2015	October 16, 2015	CMPA	Yes	Increase	1004	Sowers Curtis R &/Or Mark A. T/A Huckleberry Da	003347	423,600	389,712	452,388	416,197

Virginia State Milk Commission
 Base Assignment System
 October 2015

Established 9-month Base	DFA SE	DFA NE	MDVA	CMPA	Land O'Lakes	Cumberland Valley	Mt. Joy	Independent		Established Base Total
	30,770,482	226,771	25,652,354	15,498,836	811,434	271,312	128,623	208,372		73,568,184

Order	Distributor	DFA SE	DFA NE	MDVA	CMPA	Land O'Lakes	Cumberland Valley	Mt. Joy	Independent		Total Base Assignment
5	Borden Dairy KY			517,166							517,166
33	Broughton Foods	152,571									152,571
1	Cloverland Greenspring			5,400,511			277,275				5,677,786
1	Crowley Foods	611,733									611,733
1	Cumberland Dairy					206,155					206,155
5	Dairy Fresh	4,113,905		649,351	3,926,865						8,690,121
5	Harris Teeter				1,002,684						1,002,684
5	Homestead Creamery				152,556				212,952		365,508
1	HP Hood			1,516,243		200,000					1,716,243
5	Land-O-Sun Spartanburg			870,101							870,101
1	Marva Maid Landover			507,560							507,560
VA	Marva Maid Newport News	3,199,571		2,324,725	1,599,807						7,124,103
5	Mayfield			2,861,755							2,861,755
5	Milkco			1,917,768							1,917,768
33	Nestle	445,364									445,364
5	PET Richmond	7,437,762		4,796,211	9,157,558						21,391,531
VA	Potomac Farms			323,139							323,139
7	Saputo Dairy KY	354,678									354,678
1	Saputo Foods NY	462,867									462,867
33	Superior Dairy	1,129,445									1,129,445
1	Swiss Premium Dairy			2,881,832							2,881,832
1	Tuscan Lehigh Dairies	526,685	231,755			423,113		131,450			1,313,003
33	United Dairy	5,250,198									5,250,198
1	Upstate Niagara			172,438							172,438
1	Wawa Dairy			423,080							423,080
5	Westover Dairy	7,660,501									7,660,501
5	White Wave Mt. Crawford			1,054,261							1,054,261
5	Winchester Farms	101,476									101,476
5	Maola										
TOTAL		31,446,756	231,755	26,216,142	15,839,470	829,268	277,275	131,450	212,952		75,185,067

9-month Base Minus Total	(0)	(0)	0	0	0	0	0	0	0	0	0
---------------------------------	------------	------------	----------	----------	----------	----------	----------	----------	----------	----------	----------

**Virginia State Milk Commission
 Base Assignment System
 October 2015**

Virginia Base				
Base Assignable to Virginia Plants:	7,447,242	Percentage of Base Assignable to Virginia Plants:		10.322111%
	DFA	MDVA	CMPA	TOTAL
Assignable Base:	30,997,253	25,652,354	15,498,836	72,148,443
Virginia Plant Base Assignment:	3,199,571	2,647,864	1,599,807	7,447,242
Virginia Plants	DFA	MDVA	CMPA	
Marva Maid Newport News:	3,199,571	2,324,725	1,599,807	7,124,103
PET Richmond				
Potomac Farms		323,139		323,139
White Wave Mt. Crawford				
Total	3,199,571	2,647,864	1,599,807	7,447,242

	DFA	MDVA	CMPA	Land O'Lakes	Cumberland Valley	Mt. Joy	Independent
Base Assigned to Virginia Plants:	3,199,571	2,647,864	1,599,807				
Percent of Total Base Assigned to Virginia Plants (%):	10.10%	10.10%	10.10%				
Base Assigned to Fully Regulated Federal Order Plants:	28,478,941	23,568,278	14,239,663	829,268	277,275	131,450	212,952
Percent of Total Base Assigned to Federal Order Plants (%):	89.90%	89.90%	89.90%	100.00%	100.00%	100.00%	100.00%
Total Base Assigned:	31,678,511	26,216,142	15,839,470	829,268	277,275	131,450	212,952
Assigned Base (From Base worksheet):	31,678,511	26,216,142	15,839,470	829,268	277,275	131,450	212,952
Variance (Total Base Assigned - Assigned Base):	0	0	0				
Base Assigned to Federal Order 1 (%):	5.79%	41.58%		100.00%	100.00%	100.00%	
Base Assigned to Federal Order 5 (%):	60.97%	48.32%	89.90%				100.00%
Base Assigned to Federal Order 7 (%):	1.12%						
Base Assigned to Federal Order 33 (%):	22.03%						
Total Base Assigned to Federal Order Plants (%):	89.90%	89.90%	89.90%	100.00%	100.00%	100.00%	100.00%

**Virginia State Milk Commission
 Producer Base Transfers
 For Commission Approval: December 17, 2015**

The Administrator read and considered the following producer base transfer requests and made the required corrections to monthly processor base assignments:

Date Received	Effective Date	Cooperative	Consigned	Action	Transfer Number	Producer Name	License No.	Previous Base		Adjusted Base	
								9-Month	3-Month	9-Month	3-Month
November 4, 2015	November 1, 2015	MDVA	Yes	Cancel	--	Gloss W R/S R	005107	19,838	18,251	0	0
November 4, 2015	November 1, 2015	MDVA	Yes	Increase	--	Horst Leonard S & Vernon S	004009	10,287	9,464	30,125	27,715
November 4, 2015	November 1, 2015	MDVA	Yes	Cancel	--	Zook Samuel K/Sadie B	005150	17,742	16,323	0	0
November 4, 2015	November 1, 2015	MDVA	Yes	Increase	--	Smith Bernard D/Cynthia	004084	11,876	10,926	29,618	27,249
November 18, 2015	November 1, 2015	MDVA	Yes	Cancel	--	Newcommer John N III	004333	11,082	10,195	0	0
November 18, 2015	November 1, 2015	MDVA	Yes	Increase	--	Hendershot Gary W/Donald E PTNRS	002111	10,935	10,060	22,017	20,255
November 6, 2015	November 1, 2015	MDVA	Yes	Cancel	--	Clowney TE RT JM-Lagging-Stream	004734	35,625	32,775	0	0
November 6, 2015	November 1, 2015	MDVA	Yes	Increase	--	Beard Donald L-Linda E T/A High Point FM	003645	11,237	10,338	46,862	43,113
November 12, 2015	November 1, 2015	DFA	Yes	Cancel	--	Morehead Rex Y	002866	262,353	241,365	0	0
November 12, 2015	November 1, 2015	DFA	Yes	Increase	--	Kooba Dairy Inc	005137	1,052,592	968,385	1,314,945	1,209,750
September 28, 2015	November 1, 2015	CMPA	No	Consign	--	Hidden Hollow Dairy LLC (Edward Showalter, Owner)	004470	164,433	151,278	164,433	151,278
September 28, 2015	November 1, 2015	CMPA	Yes	Consign	--	Hidden Hollow Dairy LLC (Edward Showalter, Owner)	004470	164,433	151,278	164,433	151,278
October 19, 2015	November 1, 2015	MDVA	Yes	Cancel	--	Yakamook Steven J & Monica J	004935	10,993	10,114	0	0
October 19, 2015	November 1, 2015	MDVA	Yes	Increase	--	Martin Philip M/Delphine S	004199	6,227	5,729	17,220	15,843
October 21, 2015	November 1, 2015	MDVA	No	Total Transfer	1102	Janney James M & Lavaun V	005193	56,753	52,213	0	0
October 21, 2015	November 1, 2015	MDVA	No	Increase	1102	Leonard G Kyle Jr	005074	140,050	128,846	196,803	181,059
October 27, 2015	November 1, 2015	MDVA	No	Total Transfer	1103	Pakaho Farm Inc	004585	17,505	16,105	0	0
October 27, 2015	November 1, 2015	MDVA	No	Increase	1103	Blank Daniel K & Naomi S	004843	48,976	45,058	66,481	61,163

Virginia State Milk Commission
 Base Assignment System
 November 2015

Established 9-month Base	DFA SE	DFA NE	MDVA	CMPA	Land O'Lakes	Cumberland Valley	Mt. Joy	Independent		Established Base Total
	30,770,482	226,771	25,652,354	15,498,836	811,434	271,312	128,623	208,372		73,568,184

Order	Distributor	DFA SE	DFA NE	MDVA	CMPA	Land O'Lakes	Cumberland Valley	Mt. Joy	Independent		Total Base Assignment
5	Borden Dairy KY			581,238							581,238
33	Broughton Foods	160,445									160,445
1	Cloverland Greenspring			5,140,208			268,331				5,408,539
1	Crowley Foods	629,921									629,921
1	Cumberland Dairy					234,502					234,502
5	Dairy Fresh	3,441,795		543,263	3,285,313						7,270,372
5	Harris Teeter				946,554						946,554
5	Homestead Creamery				218,383				206,082		424,466
1	HP Hood			1,593,520		200,000					1,793,520
5	Land-O-Sun Spartanburg			910,031							910,031
1	Marva Maid Landover			503,110							503,110
VA	Marva Maid Newport News	2,356,241		1,568,420	1,178,136						5,102,797
5	Mayfield			2,805,996							2,805,996
5	Milkco			1,993,910							1,993,910
33	Nestle	459,721									459,721
5	PET Richmond	8,085,386		4,856,052	9,700,132						22,641,570
VA	Potomac Farms			381,531							381,531
7	Saputo Dairy KY	343,789									343,789
1	Saputo Foods NY	493,048									493,048
33	Superior Dairy	1,062,408									1,062,408
1	Swiss Premium Dairy			2,779,139							2,779,139
1	Tuscan Lehigh Dairies	461,582	224,279			368,015		127,210			1,181,086
33	United Dairy	5,167,845									5,167,845
1	Upstate Niagara			168,713							168,713
1	Wawa Dairy			418,521							418,521
5	Westover Dairy	7,661,894									7,661,894
5	White Wave Mt. Crawford			1,126,807							1,126,807
5	Winchester Farms	108,271									108,271
5	Maola										
TOTAL		30,432,345	224,279	25,370,460	15,328,519	802,517	268,331	127,210	206,082		72,759,742

9-month Base Minus Total	0		(0)								
---------------------------------	----------	--	------------	--	--	--	--	--	--	--	--

**Virginia State Milk Commission
 Base Assignment System
 November 2015**

Virginia Base				
Base Assignable to Virginia Plants:	5,484,329	Percentage of Base Assignable to Virginia Plants:		7.601451%
	DFA	MDVA	CMPA	TOTAL
Assignable Base:	30,997,253	25,652,354	15,498,836	72,148,443
Virginia Plant Base Assignment:	2,356,241	1,949,951	1,178,136	5,484,329
Virginia Plants	DFA	MDVA	CMPA	
Marva Maid Newport News:	2,356,241	1,568,420	1,178,136	5,102,797
PET Richmond				
Potomac Farms		381,531		381,531
White Wave Mt. Crawford				
Total	2,356,241	1,949,951	1,178,136	5,484,329

	DFA	MDVA	CMPA	Land O'Lakes	Cumberland Valley	Mt. Joy	Independent
Base Assigned to Virginia Plants:	2,356,241	1,949,951	1,178,136				
Percent of Total Base Assigned to Virginia Plants (%):	7.69%	7.69%	7.69%				
Base Assigned to Fully Regulated Federal Order Plants:	28,300,383	23,420,509	14,150,383	802,517	268,331	127,210	206,082
Percent of Total Base Assigned to Federal Order Plants (%):	92.31%	92.31%	92.31%	100.00%	100.00%	100.00%	100.00%
Total Base Assigned:	30,656,624	25,370,460	15,328,519	802,517	268,331	127,210	206,082
Assigned Base (From Base worksheet):	30,656,624	25,370,460	15,328,519	802,517	268,331	127,210	206,082
Variance (Total Base Assigned - Assigned Base):							
Base Assigned to Federal Order 1 (%):	5.90%	41.79%		100.00%	100.00%	100.00%	
Base Assigned to Federal Order 5 (%):	62.95%	50.52%	92.31%				100.00%
Base Assigned to Federal Order 7 (%):	1.12%						
Base Assigned to Federal Order 33 (%):	22.35%						
Total Base Assigned to Federal Order Plants (%):	92.31%	92.31%	92.31%	100.00%	100.00%	100.00%	100.00%

**Virginia State Milk Commission
 Producer Base Transfers
 For Commission Approval: December 17, 2015**

The Administrator read and considered the following producer base transfer requests and made the required corrections to monthly processor base assignments:

Date Received	Effective Date	Cooperative	Consigned	Action	Transfer Number	Producer Name	License No.	Previous Base		Adjusted Base	
								9-Month	3-Month	9-Month	3-Month
November 20, 2015	December 1, 2015	DFA	Yes	Cancel	--	Zeigenfuss Wayne/Gale	004221	96,451	88,735	0	0
November 20, 2015	December 1, 2015	DFA	Yes	Increase	--	Kooba Dairy Inc	005137	1,314,945	1,209,750	1,411,396	1,298,485
December 9, 2015	December 1, 2015	MDVA	Yes	Cancel	--	Custard W L & Amanda H	002597	32,500	29,900	0	0
December 9, 2015	December 1, 2015	MDVA	Yes	Increase	--	Horst Ray L/Bonnie S	004340	10,840	9,973	43,340	39,873
December 9, 2015	December 1, 2015	MDVA	Yes	Cancel	--	Tatum John W	003209	37,814	34,789	0	0
December 9, 2015	December 1, 2015	MDVA	Yes	Increase	--	Miller Mark D/Martha M	003976	10,542	9,699	48,356	44,488
December 10, 2015	December 16, 2015	CMPA	Yes	Partial Transfer	1202	Bowman Emery &/Or Cheryl	004736	43,257	39,796	14,090	12,962
December 10, 2015	December 16, 2015	CMPA	No	Partial Transfer	1202	Waller Farms Inc	001379	380,245	349,825	409,412	376,659
December 14, 2015	December 16, 2015	DFA SE	Yes	Partial Transfer	1203	Williams Dairy Inc Robert & Ricky Williams	005184	413,087	380,040	408,087	375,440
December 14, 2015	December 16, 2015	DFA SE	No	Partial Transfer	1203	Homestead Valley Farm Inc	004939	162,119	149,149	167,119	153,749
December 14, 2015	December 16, 2015	CMPA	Yes	Partial Transfer	1204	Beaver Dam Farm Inc	004969	139,606	128,438	29,606	27,238
December 14, 2015	December 16, 2015	CMPA	Yes	Partial Transfer	1204	Cook James M T/A Jareco Farms	005256	519,481	477,922	629,481	579,122

Virginia State Milk Commission
 Base Assignment System
 December 2015

Established 9-month Base	DFA SE	DFA NE	MDVA	CMPA	Land O'Lakes	Cumberland Valley	Mt. Joy	Independent		Established Base Total
	30,770,482	226,771	25,652,354	15,498,836	811,434	271,312	128,623	208,372		73,568,184

Order	Distributor	DFA SE	DFA NE	MDVA	CMPA	Land O'Lakes	Cumberland Valley	Mt. Joy	Independent		Total Base Assignment
5	Borden Dairy KY			519,506							519,506
33	Broughton Foods	171,600									171,600
1	Cloverland Greenspring			5,443,481			277,275				5,720,756
1	Crowley Foods	630,409									630,409
1	Cumberland Dairy					262,797					262,797
5	Dairy Fresh	3,494,714		551,616	3,335,826						7,382,156
5	Harris Teeter				1,004,485						1,004,485
5	Homestead Creamery				274,434				212,952		487,386
1	HP Hood			1,539,985		200,000					1,739,985
5	Land-O-Sun Spartanburg			974,549							974,549
1	Marva Maid Landover			547,906							547,906
VA	Marva Maid Newport News	2,912,526		1,998,027	1,456,282						6,366,835
5	Mayfield			2,894,904							2,894,904
5	Milkco			2,115,751							2,115,751
33	Nestle	532,468									532,468
5	PET Richmond	7,498,154		4,613,078	9,768,442						21,879,674
VA	Potomac Farms			412,288							412,288
7	Saputo Dairy KY	344,135									344,135
1	Saputo Foods NY	492,804									492,804
33	Superior Dairy	1,186,908									1,186,908
1	Swiss Premium Dairy			2,900,106							2,900,106
1	Tuscan Lehigh Dairies	501,360	231,755			366,471		131,450			1,231,035
33	United Dairy	5,393,499									5,393,499
1	Upstate Niagara			168,309							168,309
1	Wawa Dairy			484,790							484,790
5	Westover Dairy	8,176,496									8,176,496
5	White Wave Mt. Crawford			1,051,846							1,051,846
5	Winchester Farms	111,684									111,684
5	Maola										
TOTAL		31,446,756	231,755	26,216,142	15,839,470	829,268	277,275	131,450	212,952		75,185,067

9-month Base Minus Total	(0)	(0)									
---------------------------------	------------	------------	--	--	--	--	--	--	--	--	--

**Virginia State Milk Commission
 Base Assignment System
 December 2015**

Virginia Base				
Base Assignable to Virginia Plants:	6,779,123	Percentage of Base Assignable to Virginia Plants:		9.396076%
	DFA	MDVA	CMPA	TOTAL
Assignable Base:	30,997,253	25,652,354	15,498,836	72,148,443
Virginia Plant Base Assignment:	2,912,526	2,410,315	1,456,282	6,779,123
Virginia Plants	DFA	MDVA	CMPA	
Marva Maid Newport News:	2,912,526	1,998,027	1,456,282	6,366,835
PET Richmond				
Potomac Farms		412,288		412,288
White Wave Mt. Crawford				
Total	2,912,526	2,410,315	1,456,282	6,779,123

	DFA	MDVA	CMPA	Land O'Lakes	Cumberland Valley	Mt. Joy	Independent
Base Assigned to Virginia Plants:	2,912,526	2,410,315	1,456,282				
Percent of Total Base Assigned to Virginia Plants (%):	9.19%	9.19%	9.19%				
Base Assigned to Fully Regulated Federal Order Plants:	28,765,986	23,805,827	14,383,187	829,268	277,275	131,450	212,952
Percent of Total Base Assigned to Federal Order Plants (%):	90.81%	90.81%	90.81%	100.00%	100.00%	100.00%	100.00%
Total Base Assigned:	31,678,511	26,216,142	15,839,470	829,268	277,275	131,450	212,952
Assigned Base (From Base worksheet):	31,678,511	26,216,142	15,839,470	829,268	277,275	131,450	212,952
Variance (Total Base Assigned - Assigned Base):	0						
Base Assigned to Federal Order 1 (%):	5.86%	42.28%		100.00%	100.00%	100.00%	
Base Assigned to Federal Order 5 (%):	60.86%	48.52%	90.81%				100.00%
Base Assigned to Federal Order 7 (%):	1.09%						
Base Assigned to Federal Order 33 (%):	23.00%						
Total Base Assigned to Federal Order Plants (%):	90.81%	90.81%	90.81%	100.00%	100.00%	100.00%	100.00%


Chairperson


Administrator